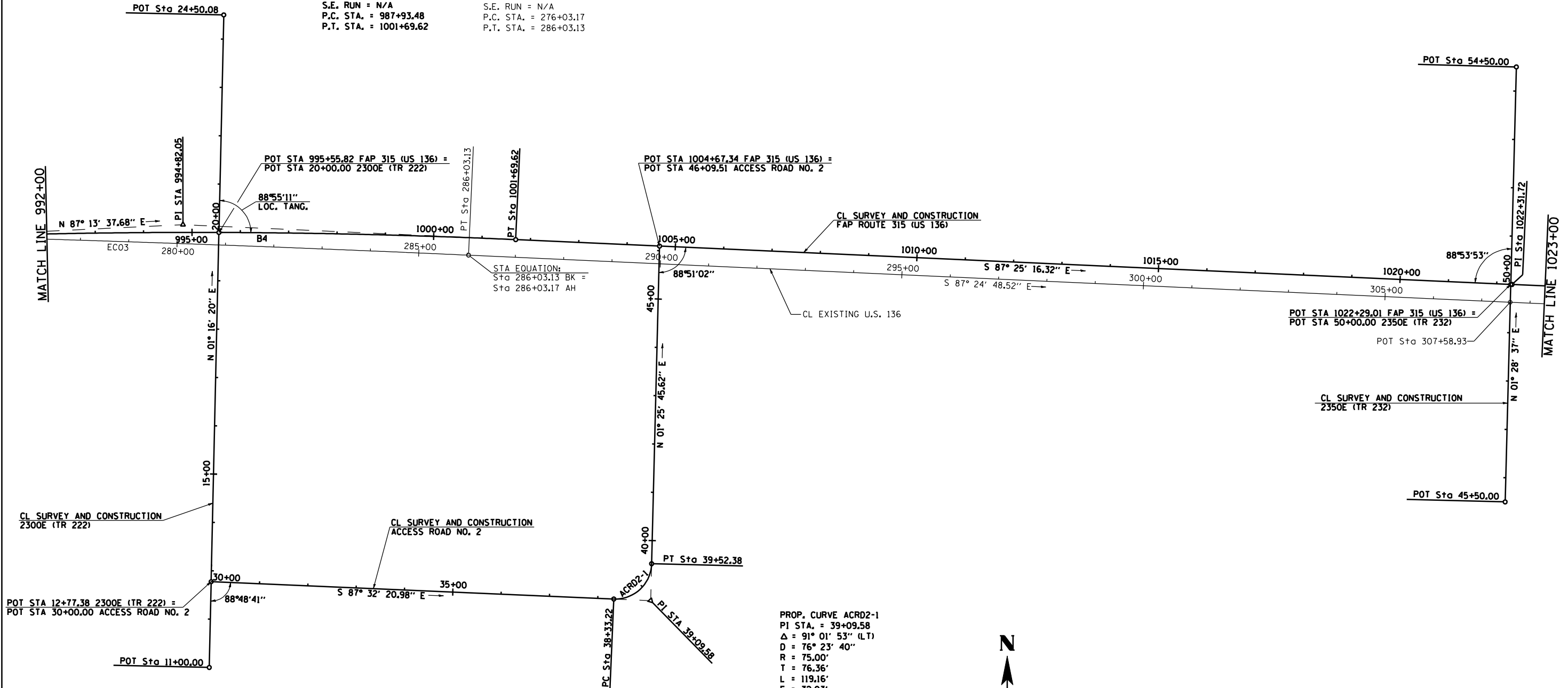


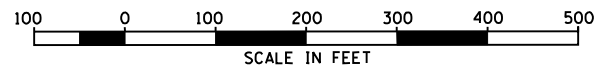
F.A.P. RTE.	SECTION	COUNTY	TOTAL SHEETS	SHEET NO.
315	34-4	HANCOCK	452	46
STA. 992+00		TO STA. 1023+00		
FED. ROAD DIST. NO.		ILLINOIS	FED. AID PROJECT	

D-86-891-02
CONTRACT NO. 72680

PROP. CURVE B4 PI STA. = 994+82.05 $\Delta = 5^\circ 21' 06''$ (RT) $D = 0^\circ 23' 20''$ $R = 14,733.20'$ $T = 688.57'$ $L = 1,376.14'$ $E = 16.08'$ $e = \text{NORMAL CROWN}$ $T.R. = \text{N/A}$ $S.E. \text{ RUN} = \text{N/A}$ $P.C. \text{ STA.} = 987+93.48$ $P.T. \text{ STA.} = 1001+69.62$	EXIST. CURVE EC03 PI STA. = 281+03.16 $\Delta = 0^\circ 56' 16''$ (RT) $D = 0^\circ 05' 38''$ $R = 61,087.36'$ $T = 499.99'$ $L = 999.96'$ $E = 2.05'$ $e = \text{N/A}$ $T.R. = \text{N/A}$ $S.E. \text{ RUN} = \text{N/A}$ $P.C. \text{ STA.} = 276+03.17$ $P.T. \text{ STA.} = 286+03.13$
--	--



PROP. CURVE ACRD2-1
 PI STA. = 39+09.58
 $\Delta = 91^\circ 01' 53''$ (LT)
 $D = 76^\circ 23' 40''$
 $R = 75.00'$
 $T = 76.36'$
 $L = 119.16'$
 $E = 32.03'$
 $e = \text{REMOVE CROWN}$
 $T.R. = \text{N/A}$
 $S.E. \text{ RUN} = \text{N/A}$
 $P.C. \text{ STA.} = 38+33.22$
 $P.T. \text{ STA.} = 39+52.38$



REVISIONS	
NAME	DATE

ILLINOIS DEPARTMENT OF TRANSPORTATION
**FAP ROUTE 315
 ALIGNMENT LAYOUT
 STA 992+00 TO STA 1023+00**

SCALE: 1" = 100'-0"
 DATE 1/31/06

DRAWN BY JCG
 CHECKED BY JRB