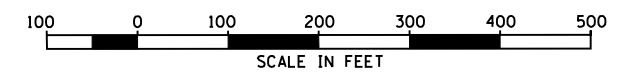
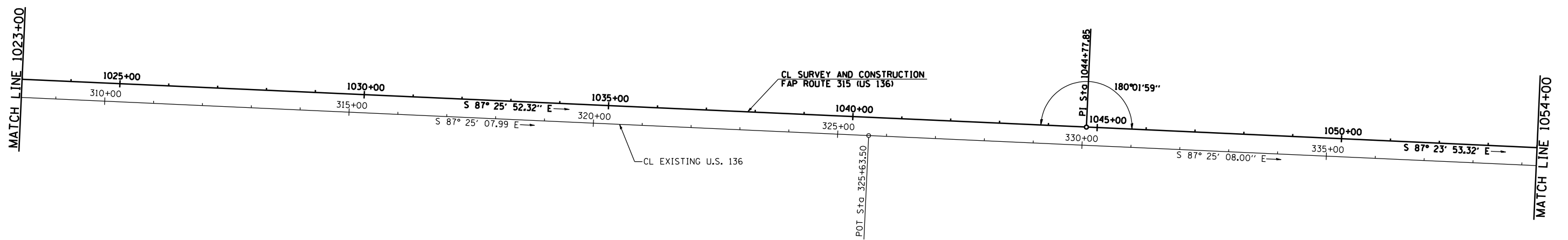


F.A.P. RTE.	SECTION	COUNTY	TOTAL SHEETS	SHEET NO.
315	34-4	HANCOCK	452	47
STA. 1023+00		TO STA. 1054+00		
FED. ROAD DIST. NO.	ILLINOIS	FED. AID PROJECT		

D-96-991-02  
**CONTRACT NO. 72680**



REVISIONS	
NAME	DATE

ILLINOIS DEPARTMENT OF TRANSPORTATION  
**FAP ROUTE 315  
ALIGNMENT LAYOUT  
STA 1023+00 TO STA 1054+00**

SCALE: 1" = 100'-0"  
DATE 1/31/06

DRAWN BY JCG  
CHECKED BY JRB