

F.A.P. RTE.	SECTION	COUNTY	TOTAL SHEETS	SHEET NO.
315	34-4	HANCOCK	452	49
STA. 1086+00		TO STA. 1145+00		
FED. ROAD DIST. NO.		ILLINOIS	FED. AID PROJECT	

D-96-891-02
CONTRACT NO. 72680

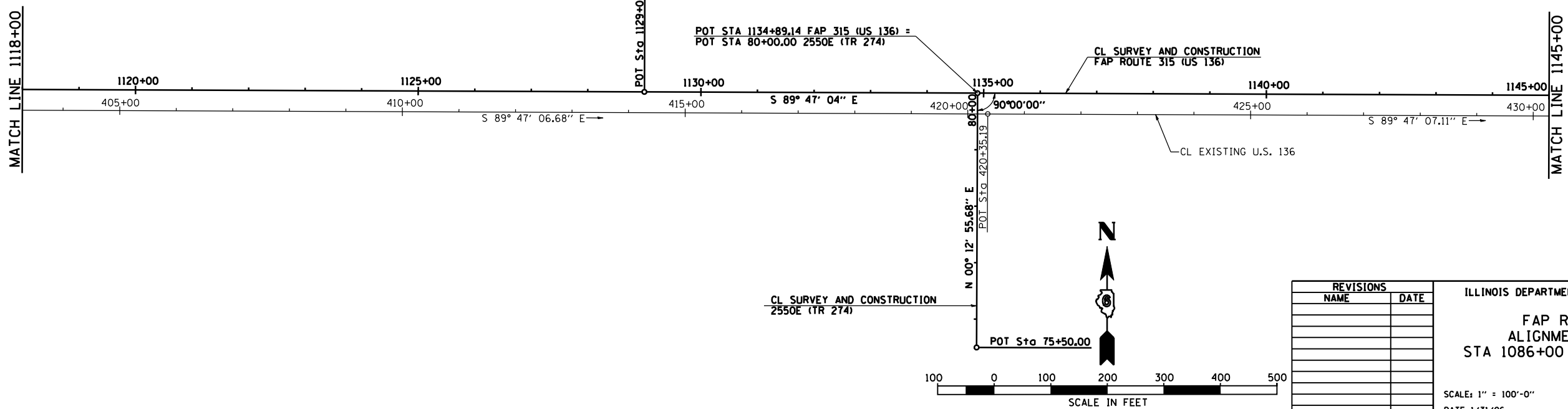
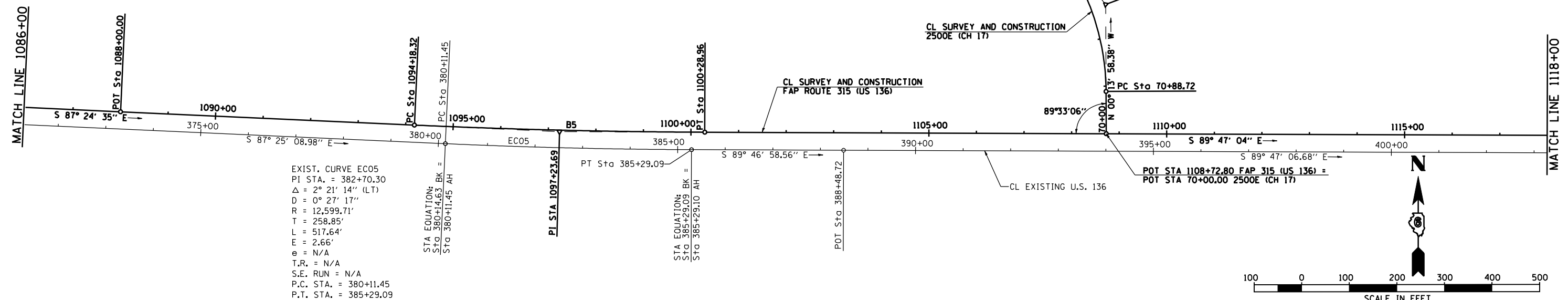
PROP. CURVE B5
PI STA. = 1097+23.69
 $\Delta = 2^\circ 22' 29''$ (LT)
D = 0' 23' 20"
R = 14,733.20'
T = 305.37'
L = 610.64'
E = 3.16'
e = NORMAL CROWN
T.R. = N/A
S.E. RUN = N/A
P.C. STA. = 1094+18.32
P.T. STA. = 1100+28.96

PROP. CURVE CH17
PI STA. = 72+71.56
 $\Delta = 40^\circ 10' 26''$ (LT)
D = 11' 27' 33"
R = 500.00'
T = 182.85'
L = 350.58'
E = 32.38'
P.C. STA. = 70+88.72
P.T. STA. = 74+39.30
FOR SUPERELEVATION RATE AND THE SUPERELEVATION TRANSITION, SEE INTERSECTION DETAIL

EXIST. CURVE EC05
PI STA. = 382+70.30
 $\Delta = 2^\circ 21' 14''$ (LT)
D = 0' 27' 17"
R = 12,599.71'
T = 258.85'
L = 517.64'
E = 2.66'
e = N/A
T.R. = N/A
S.E. RUN = N/A
P.C. STA. = 380+11.45
P.T. STA. = 385+29.09

STA EQUATION:
Sta 380+14.63 BK =
Sta 380+11.45 AH

STA EQUATION:
Sta 385+29.09 BK =
Sta 385+29.10 AH



REVISIONS	
NAME	DATE

ILLINOIS DEPARTMENT OF TRANSPORTATION
**FAP ROUTE 315
ALIGNMENT LAYOUT
STA 1086+00 TO STA 1145+00**
SCALE: 1" = 100'-0"
DATE 1/31/06
DRAWN BY JCG
CHECKED BY JRB