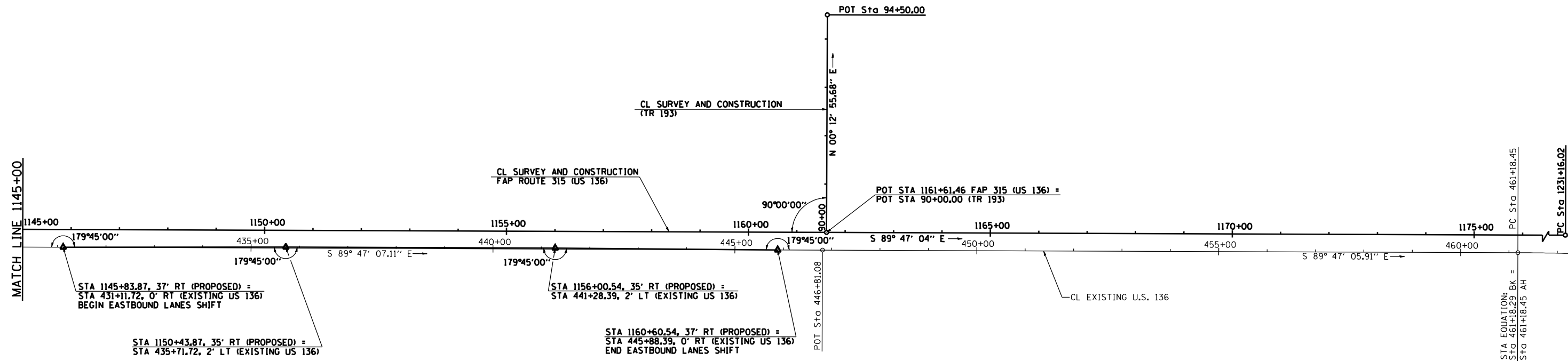
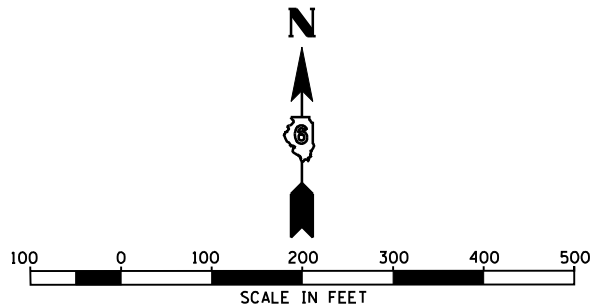


F.A.P. RTE.	SECTION	COUNTY	TOTAL SHEETS	SHEET NO.
315	34-4	HANCOCK	452	50
STA. 1145+00		TO STA. 1231+16.02		
FED. ROAD DIST. NO.		ILLINOIS	FED. AID PROJECT	

D-96-991-02  
**CONTRACT NO. 72680**



EXIST. CURVE EC07  
 PI STA. = 462+96.15  
 $\Delta$  = 4° 04' 15" (RT)  
 D = 1° 08' 45"  
 R = 4,999.93'  
 T = 177.70'  
 L = 355.24'  
 E = 3.16'  
 e = N/A  
 T.R. = N/A  
 S.E. RUN = N/A  
 P.C. STA. = 461+18.45  
 P.T. STA. = 464+73.69



REVISIONS	
NAME	DATE

ILLINOIS DEPARTMENT OF TRANSPORTATION  
**FAP ROUTE 315  
 ALIGNMENT LAYOUT  
 STA 1145+00 TO STA 1231+16.02**  
 SCALE: 1" = 100'-0"  
 DATE 1/31/06  
 DRAWN BY JCG  
 CHECKED BY JRB