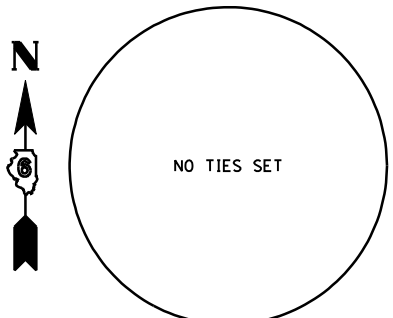


F.A.P. RTE.	SECTION	COUNTY	TOTAL SHEETS	SHEET NO.
315	34-4	HANCOCK	452	53

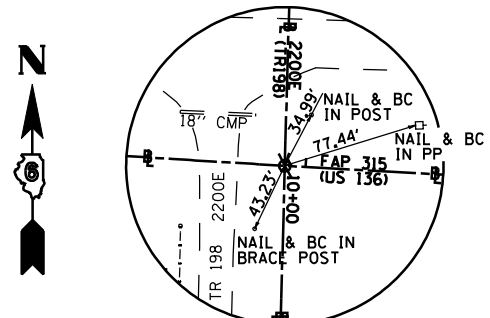
FED. ROAD DIST. NO. ILLINOIS FED. AID PROJECT

D-98-591-02

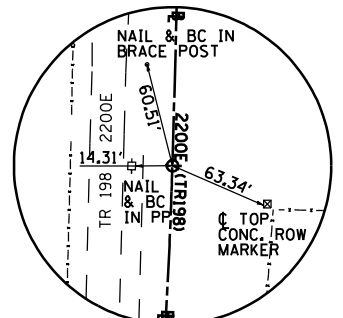
**CONTRACT NO. 72680**



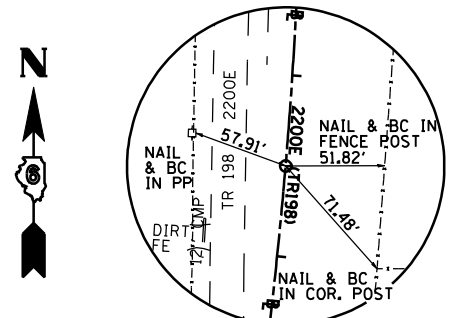
**POT STA 6+00.00**  
2200E (TR 198)  
N - 1366886.339 E - 2041696.516



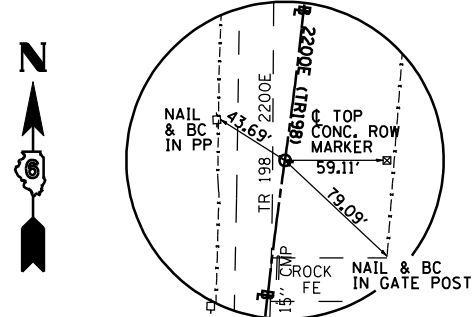
**POT STA 10+00.00**  
2200E (TR 198) =  
**POT STA 942+88.48**  
FAP RTE 315 (US 136)  
N - 1366486.483 E - 2041685.780  
REBAR/CAP



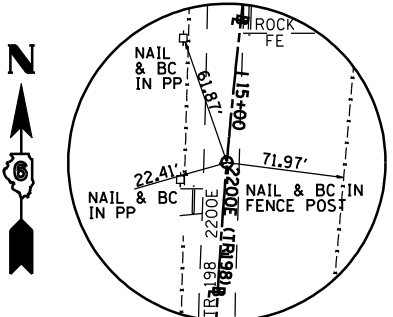
**PC STA 11+00.00**  
2200E (TR 198)  
N - 1366386.519 E - 2041683.096  
REBAR/CAP



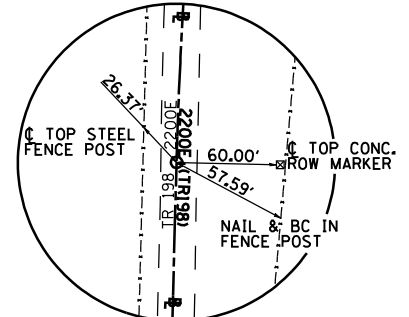
**PI STA 12+50.00**  
2200E (TR 198)  
N - 1366236.573 E - 2041679.070  
REBAR/CAP



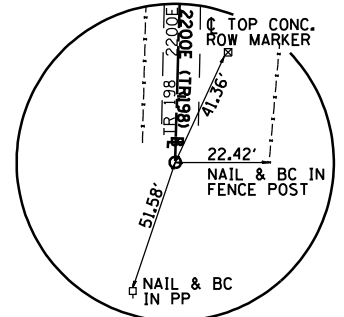
**PRC STA 13+99.67**  
2200E (TR 198)  
N - 1366088.068 E - 2041657.943  
REBAR/CAP



**PI STA 15+49.67**  
2200E (TR 198)  
N - 1365939.563 E - 2041636.817  
PK NAIL & WASHER



**PT STA 16+99.34**  
2200E (TR 198)  
N - 1365789.617 E - 2041632.791  
PK NAIL & WASHER



**POT STA 18+36.41**  
2200E (TR 198)  
N - 1365652.600 E - 2041629.112  
PK NAIL & WASHER

NOTE:  
HORIZONTAL CONTROL POINTS WITH NO TIES WILL BE  
FLAGGED BY DISTRICT SURVEYS PRIOR TO CONSTRUCTION  
ALONG WITH TEMPORARY BENCHMARK FOR VERTICAL CONTROL.

REVISIONS	
NAME	DATE

ILLINOIS DEPARTMENT OF TRANSPORTATION

**FAP ROUTE 315 SIDEROADS  
HORIZONTAL CONTROL  
TIE POINTS**

DATE 1/31/06

DRAWN BY KLS  
CHECKED BY MVM