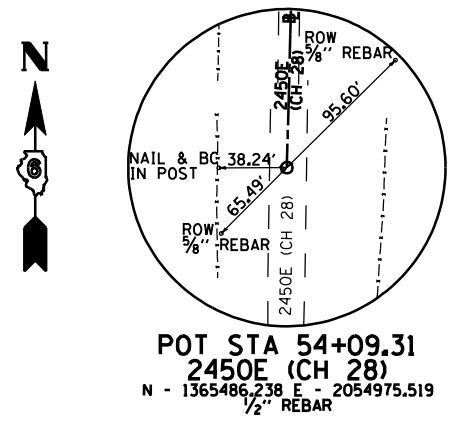


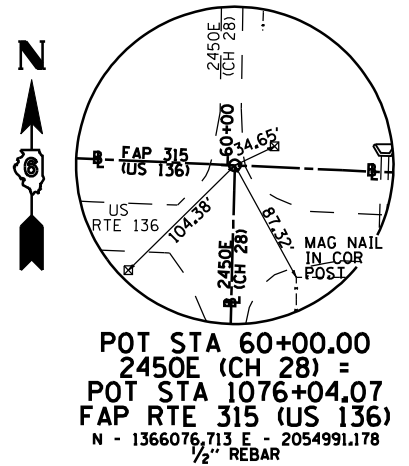
F.A.P. RTE.	SECTION	COUNTY	TOTAL SHEETS	SHEET NO.
315	34-4	HANCOCK	452	56

FED. ROAD DIST. NO. ILLINOIS FED. AID PROJECT

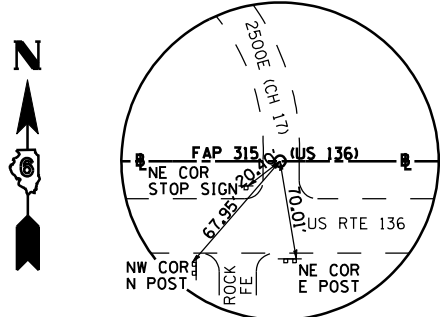
D-98-591-02
CONTRACT NO. 72680



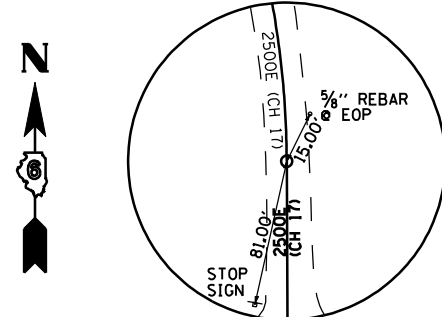
POT STA 54+09.31
2450E (CH 28)
N - 1365486.238 E - 2054975.519
1/2" REBAR



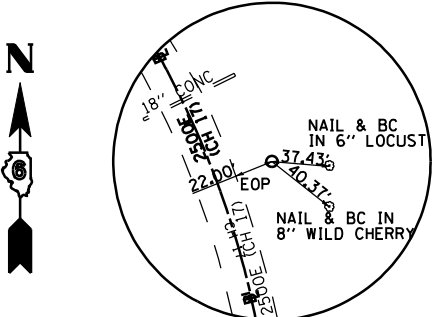
POT STA 60+00.00
2450E (CH 28) =
POT STA 1076+04.07
FAP RTE 315 (US 136)
N - 1366076.713 E - 2054991.178
1/2" REBAR



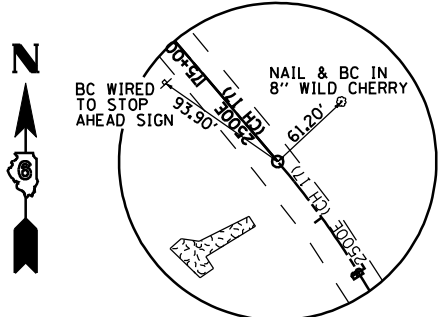
POT STA 70+00.00
2500E (CH 17) =
POT STA 1108+72.80
FAP RTE 315 (US 136)
N - 1365976.602 E - 2058257.822
PK NAIL IN CHSLD "X"



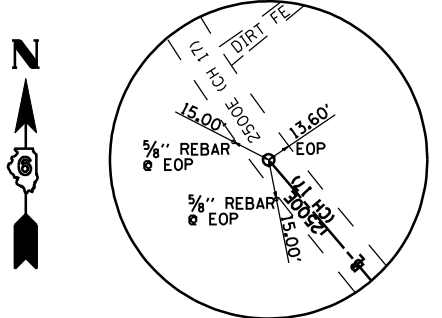
PC STA 70+88.72
2500E (CH 17)
N - 1366065.319 E - 2058257.462
PK NAIL



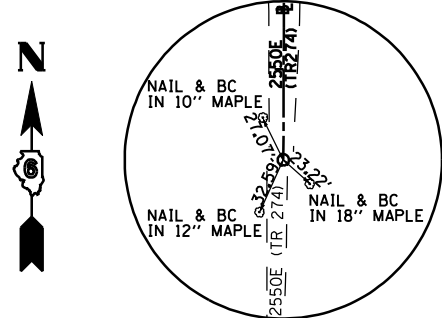
PI STA 72+71.56
2500E (CH 17)
N - 1366248.162 E - 2058256.719
REBAR/CAP



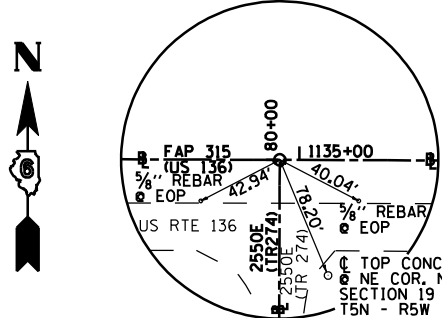
PT STA 74+39.30
2500E (CH 17)
N - 1366387.392 E - 2058138.197
PK NAIL



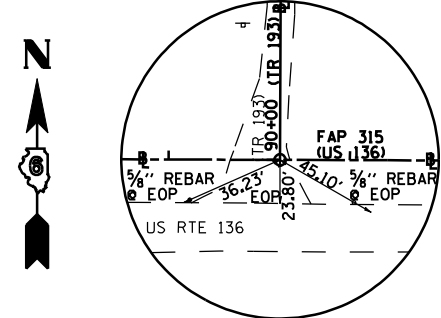
POT STA 77+50.00
2500E (CH 17)
N - 1366623.977 E - 2057936.798
RR SPIKE



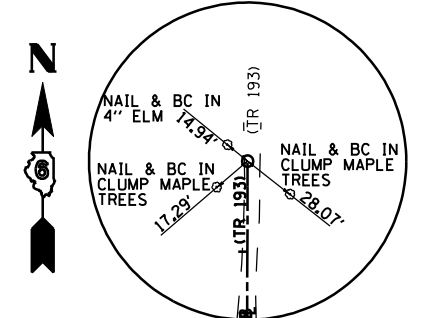
POT STA 75+50.00
2550E (TR 274)
N - 1365516.766 E - 2060872.450
5/8\"/>



POT STA 80+00.00
2550E (TR 274) =
POT STA 1134+89.14
FAP RTE 315 (US 136)
N - 1365966.763 E - 2060874.142
5/8\"/>



POT STA 90+00.00
(TR 193) =
POT STA 1161+61.46
FAP RTE 315 (US 136)
N - 1365956.714 E - 2063546.441
5/8\"/>



POT STA 94+50.00
(TR 193)
N - 1366406.711 E - 2063548.133
5/8\"/>

NOTE:
HORIZONTAL CONTROL POINTS WITH NO TIES WILL BE FLAGGED BY DISTRICT SURVEYS PRIOR TO CONSTRUCTION ALONG WITH TEMPORARY BENCHMARK FOR VERTICAL CONTROL.

REVISIONS	
NAME	DATE

ILLINOIS DEPARTMENT OF TRANSPORTATION
**FAP ROUTE 315 SIDEROADS
HORIZONTAL CONTROL
TIE POINTS**
DRAWN BY KLS
CHECKED BY MVM
DATE 1/31/06