

ANTICIPATED CONSTRUCTION ACTIVITY BAR CHART

| | | | | |
|---------------------|---------|--------------------|--------------|-----------|
| F.A.P. RTE. | SECTION | COUNTY | TOTAL SHEETS | SHEET NO. |
| 315 | 34-4 | HANCOCK | 452 | 57 |
| STA. | | TO STA. | | |
| FED. ROAD DIST. NO. | | FED. AID PROJECT | | |
| D-96-551-02 | | CONTRACT NO. 72680 | | |

ESTIMATED DATES

ESTIMATED WORKING DAYS

ANTICIPATED START
SEPTEMBER 1, 2006
(AFTER UTILITIES
ARE RELOCATED)

EST. OCT. 1, 2006
INTERIM SEEDING
COMPL. DATE

EST. DEC. 1, 2006

EST. MARCH 15, 2007

EST. MAY 15, 2007

EST. JULY 15, 2007

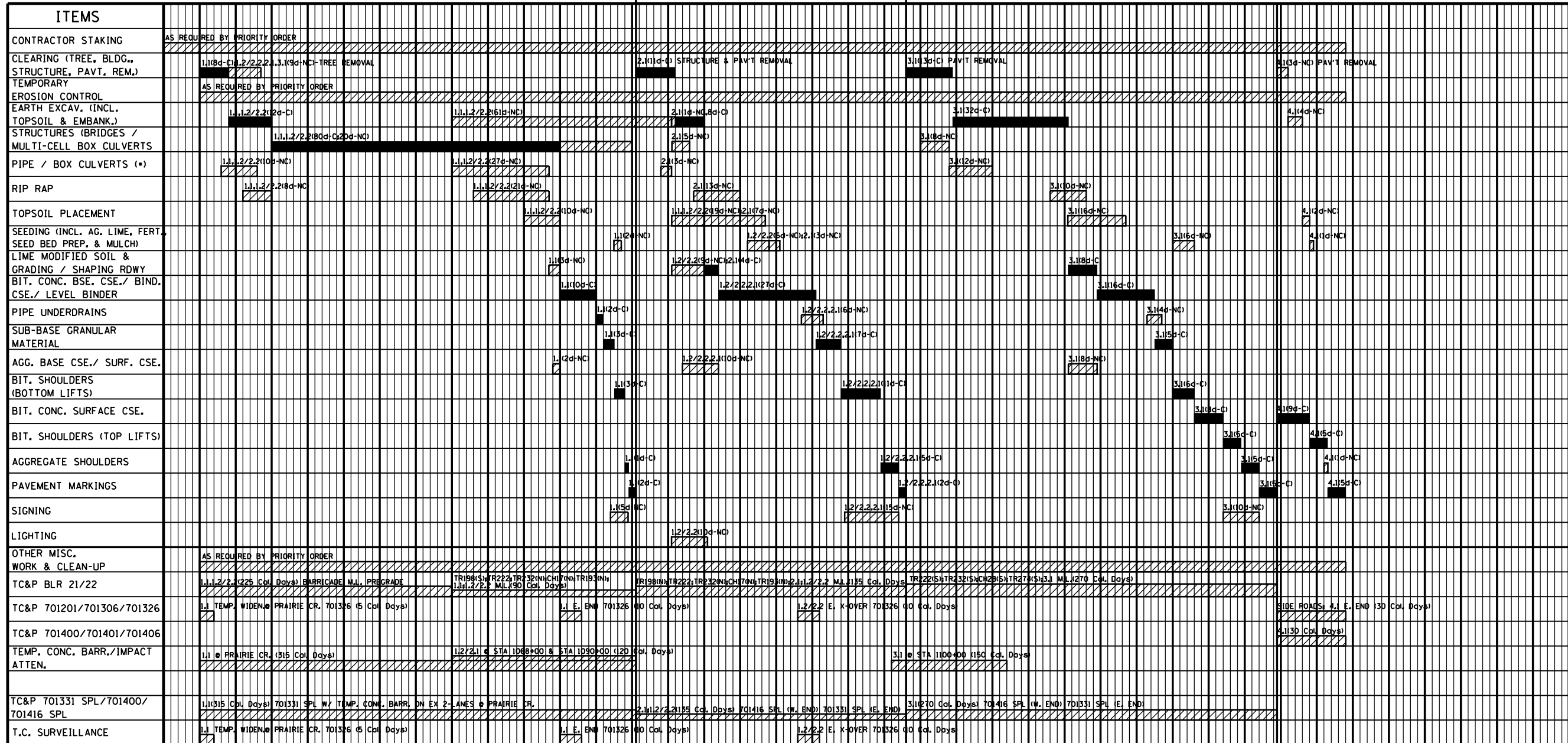
EST. OCT. 1, 2007
INTERIM SEEDING
COMPL. DATE

EST. DEC. 1, 2007

EST. MARCH 15, 2008

EST. SEPT. 1, 2008

COMPLETION DATE
OCT. 1, 2008



(*) INSTALLATION OF PIPE / BOX CULVERTS, ALSO INVOLVES NECESSARY EMBANKMENT / EXCAVATION TO BE COMPLETED AT THE SAME TIME.

TRAFFIC SWITCH NO.1

TRAFFIC SWITCH NO.2

TRAFFIC SWITCH NO.3
"FINAL POSITION"

LEGEND

NON-CONTROLLING CONSTRUCTION ACTIVITY ITEM: (4d-NC)

CONTROLLING CONSTRUCTION ACTIVITY ITEM: (4d-C)

STAGE (PORTION OF PROJECT) (SEE TRAFFIC CONTROL PLAN IN SPECIAL PROVISIONS)

ESTIMATED NUMBER OF WORKING DAYS TO COMPLETE WORK ITEM FOR THE PARTICULAR PORTION OF THE PROJECT, AND DEFINED AS CONTROLLING OR NON-CONTROLLING.
(C = CONTROLLING ITEM (CRITICAL PATH)
(NC = NON-CONTROLLING ITEM)

NOTE: FREE FLOAT NOT SHOWN FOR NON-CONTROLLING ITEMS

| STAGE DESIGNATION | |
|----------------------------|---|
| STAGE (PORTION OF PROJECT) | DESCRIPTION |
| 1.1 | IL 336 EB-GRADING & PAVING- STA 936+00 TO 987+94 |
| 1.2/2.2 | IL 336 WB-GRADING & PAVING- STA 994+80 TO 1174+00 |
| 2.1 | IL 336 EB-GRADING & PAVING- STA 927+00 TO 994+80 |
| 3.1 | IL 336 EB-GRADING- STA 987+94 TO 1174+00; |
| 3.1 | IL 336 EB-PAVING- STA 908+00 TO 1174+00; |
| 4.1 | IL 336 WB-PAVING- STA 901+00 TO 1150+48; |
| 4.1 | IL 336 EB-PAVING- STA 894+00 TO 908+00; |

NOTE: SEE TRAFFIC CONTROL PLAN IN SPECIAL PROVISIONS AND STAGING DETAILS IN PLANS FOR MORE DESCRIPTIONS/DIRECTIONS.

THIS ANTICIPATED CONSTRUCTION ACTIVITY BAR CHART IS INCLUDED IN THE PLANS TO AID THE CONTRACTOR IN SCHEDULING WORK ACTIVITIES AND FOR BIDDING PURPOSES; HOWEVER, THIS TIME SCHEDULE SHOULD ONLY BE USED AS A GUIDE, AND IT SHALL BE THE CONTRACTORS RESPONSIBILITY TO ESTABLISH HIS/HER OWN TIME SCHEDULE FOR SCHEDULING AND BIDDING PURPOSES.