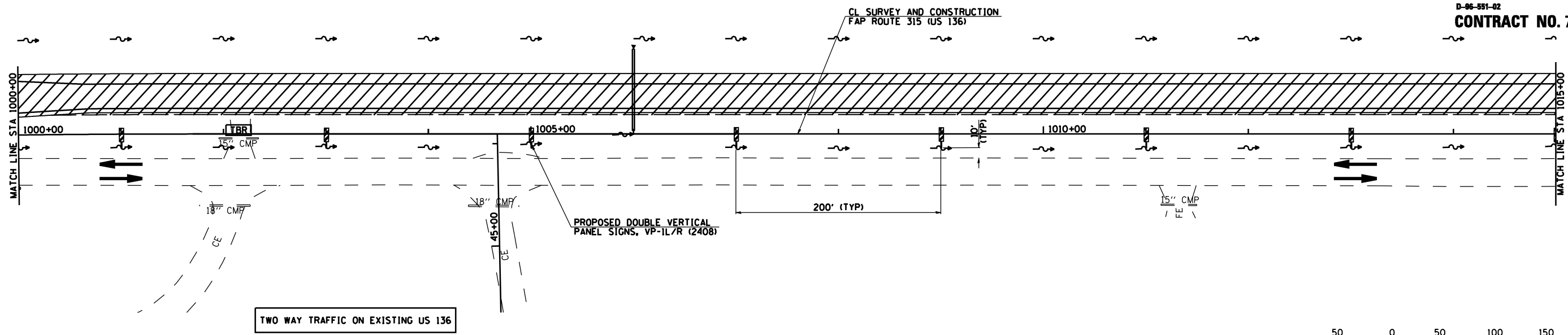


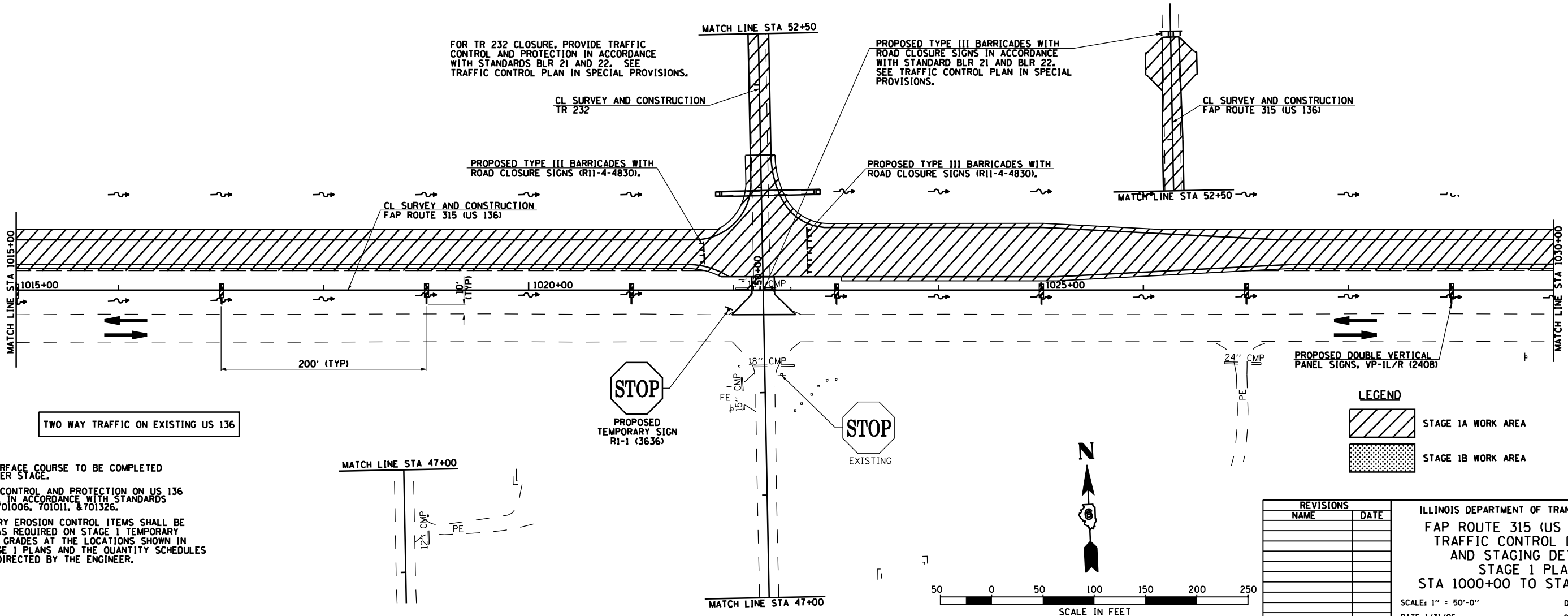
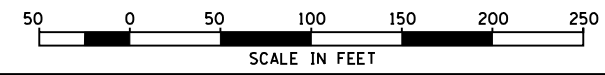
F.A.P. RTE.	SECTION	COUNTY	TOTAL SHEETS	SHEET NO.
315	34-4	HANCOCK	452	63
STA. 1000+00		TO STA. 1030+00		
FED. ROAD DIST. NO.		ILLINOIS	FED. AID PROJECT	

D-86-891-02
CONTRACT NO. 72680



NOTE: FINAL SURFACE COURSE TO BE COMPLETED IN A LATER STAGE

TWO WAY TRAFFIC ON EXISTING US 136



NOTES:
FINAL SURFACE COURSE TO BE COMPLETED IN A LATER STAGE.
TRAFFIC CONTROL AND PROTECTION ON US 136 SHALL BE IN ACCORDANCE WITH STANDARDS 701001, 701006, 701011, & 701326.
TEMPORARY EROSION CONTROL ITEMS SHALL BE PLACED AS REQUIRED ON STAGE 1 TEMPORARY FINISHED GRADES AT THE LOCATIONS SHOWN IN THE STAGE 1 PLANS AND THE QUANTITY SCHEDULES AND AS DIRECTED BY THE ENGINEER.

TWO WAY TRAFFIC ON EXISTING US 136

LEGEND

	STAGE 1A WORK AREA
	STAGE 1B WORK AREA

REVISIONS	
NAME	DATE

ILLINOIS DEPARTMENT OF TRANSPORTATION
FAP ROUTE 315 (US RTE 136)
TRAFFIC CONTROL DETAILS
AND STAGING DETAILS
STAGE 1 PLAN
STA 1000+00 TO STA 1030+00
SCALE: 1" = 50'-0"
DATE 1/31/06
DRAWN BY JCG
CHECKED BY JRB

