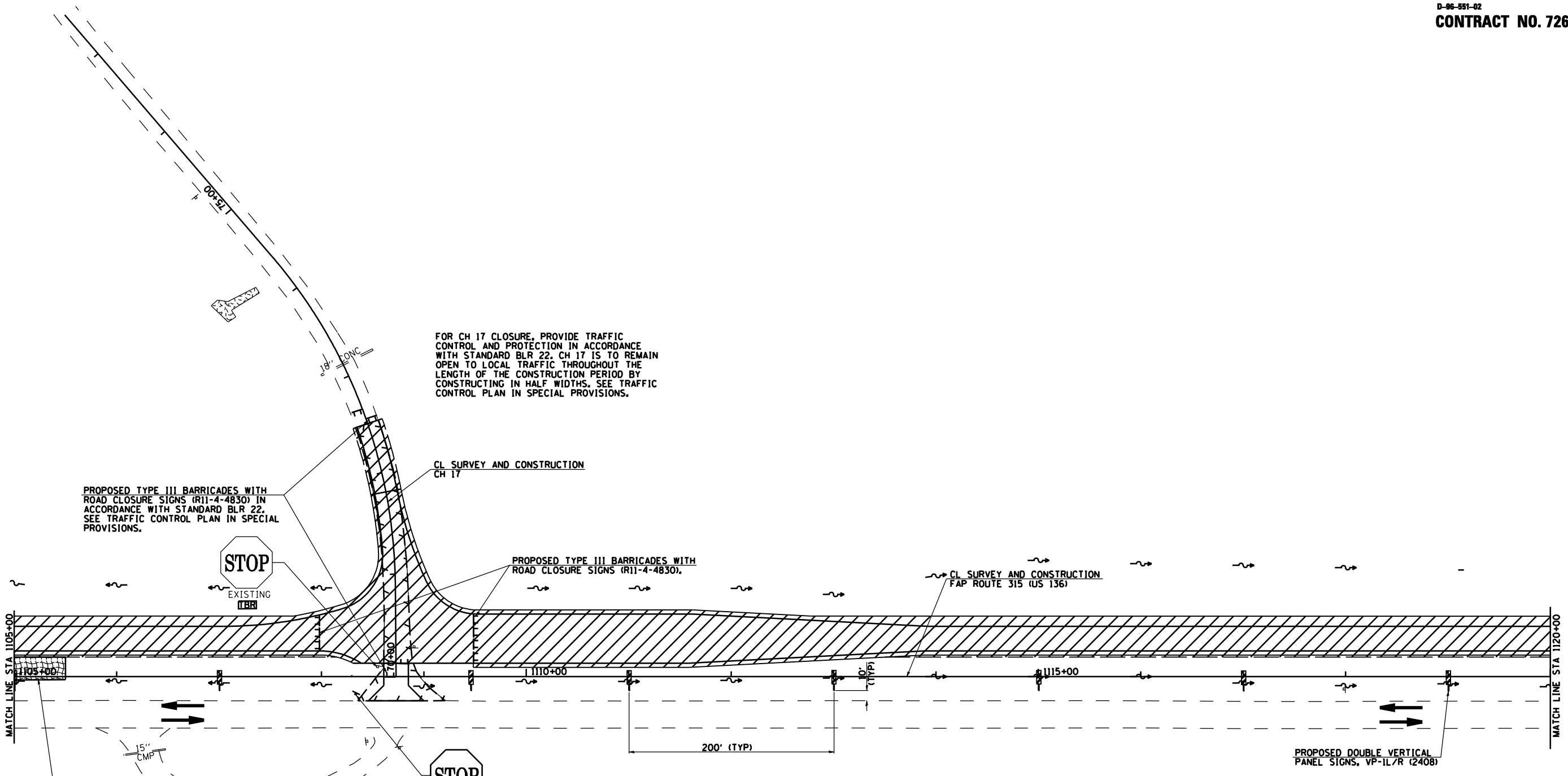


F.A.P. RTE.	SECTION	COUNTY	TOTAL SHEETS	SHEET NO.
315	34-4	HANCOCK	452	68
STA. 1105+00		TO STA. 1120+00		
FED. ROAD DIST. NO.	ILLINOIS	FED. AID PROJECT		

D-96-991-02
CONTRACT NO. 72680

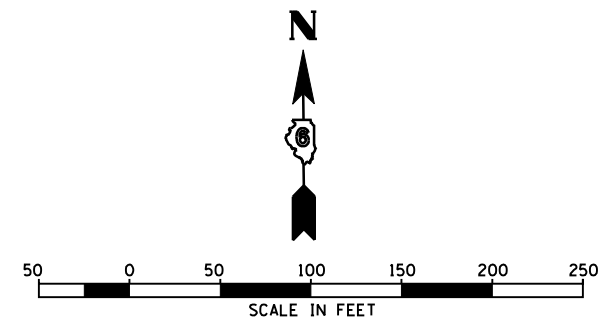


NOTES:
 FINAL SURFACE COURSE TO BE COMPLETED IN A LATER STAGE.
 TRAFFIC CONTROL AND PROTECTION ON US 136 SHALL BE IN ACCORDANCE WITH STANDARDS 701001, 701006, 701011, & 701326.
 TEMPORARY EROSION CONTROL ITEMS SHALL BE PLACED AS REQUIRED ON STAGE 1 TEMPORARY FINISHED GRADES AT THE LOCATIONS SHOWN IN THE STAGE 1 PLANS AND THE QUANTITY SCHEDULES AND AS DIRECTED BY THE ENGINEER.

TWO WAY TRAFFIC ON EXISTING US 136

LEGEND

	STAGE 1A WORK AREA
	STAGE 1B WORK AREA



REVISIONS	
NAME	DATE

ILLINOIS DEPARTMENT OF TRANSPORTATION
 FAP ROUTE 315 (US RTE 136)
 TRAFFIC CONTROL DETAILS
 AND STAGING DETAILS
 STAGE 1 PLAN
 STA 1105+00 TO STA 1120+00
 SCALE: 1" = 50'-0"
 DATE 1/31/06
 DRAWN BY JCG
 CHECKED BY JRB