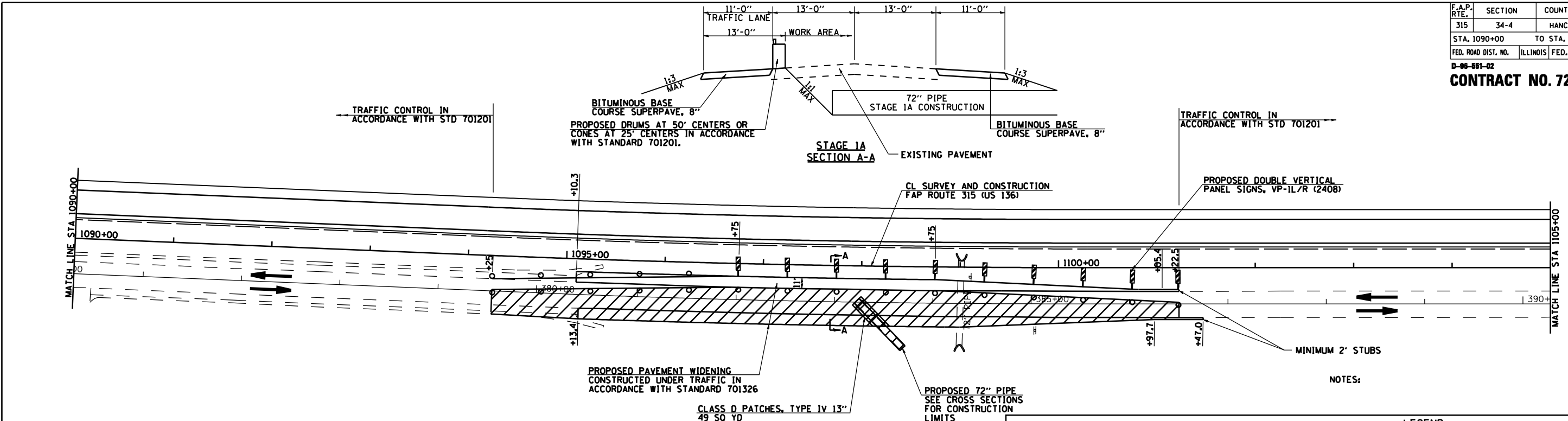


F.A.P. RTE.	SECTION	COUNTY	TOTAL SHEETS	SHEET NO.
315	34-4	HANCOCK	452	71
STA. 1090+00		TO STA. 1105+00		
FED. ROAD DIST. NO.	ILLINOIS	FED. AID PROJECT		

CONTRACT NO. 72680



LEGEND

WORK AREA

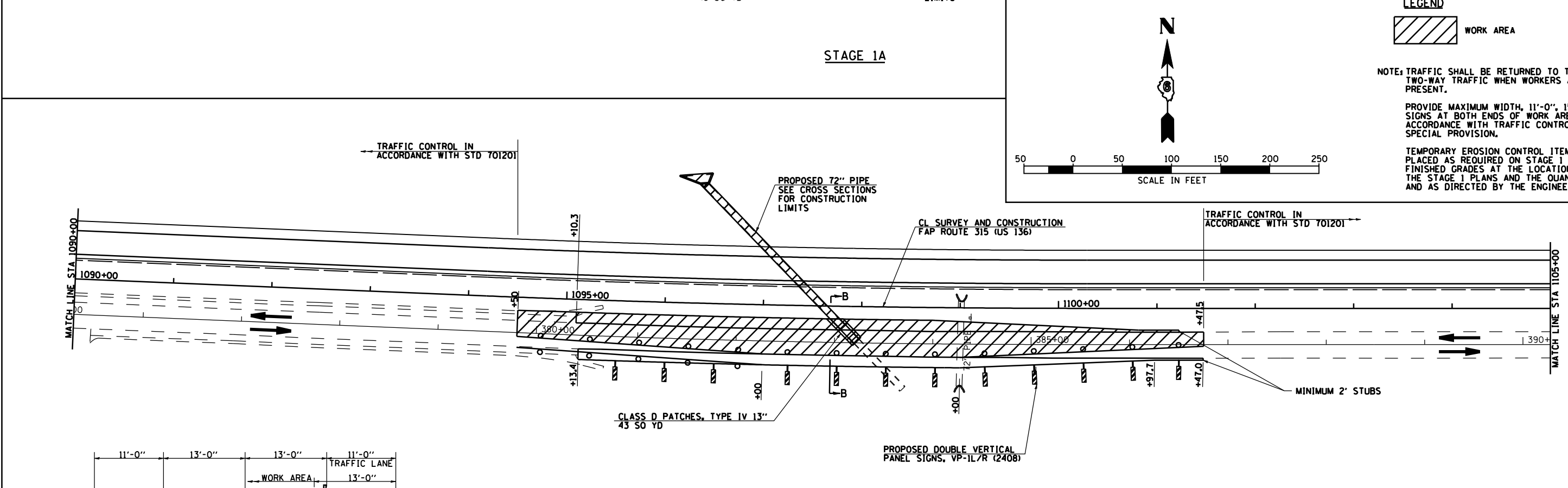
NOTE: TRAFFIC SHALL BE RETURNED TO TWO-LANE, TWO-WAY TRAFFIC WHEN WORKERS ARE NOT PRESENT.

PROVIDE MAXIMUM WIDTH, 11'-0", 1500' AHEAD SIGNS AT BOTH ENDS OF WORK AREA IN ACCORDANCE WITH TRAFFIC CONTROL SPECIAL PROVISION.

TEMPORARY EROSION CONTROL ITEMS SHALL BE PLACED AS REQUIRED ON STAGE 1 TEMPORARY FINISHED GRADES AT THE LOCATIONS SHOWN IN THE STAGE 1 PLANS AND THE QUANTITY SCHEDULES AND AS DIRECTED BY THE ENGINEER.

SCALE IN FEET

50 0 50 100 150 200 250



REVISIONS	
NAME	DATE

ILLINOIS DEPARTMENT OF TRANSPORTATION

FAP ROUTE 315 (US RTE 136)

TRAFFIC CONTROL DETAILS

CULVERT @ STA 1097+60

STAGE 1

SCALE: 1" = 50'-0"

DATE 1/31/06

DRAWN BY JCG

CHECKED BY AWM