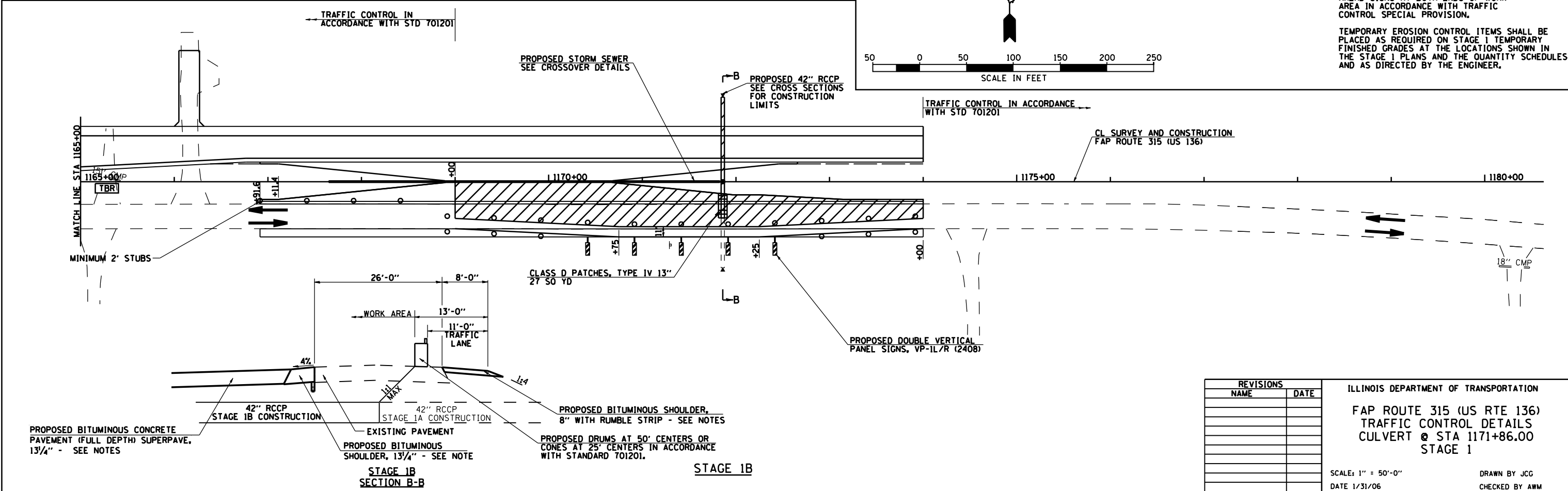
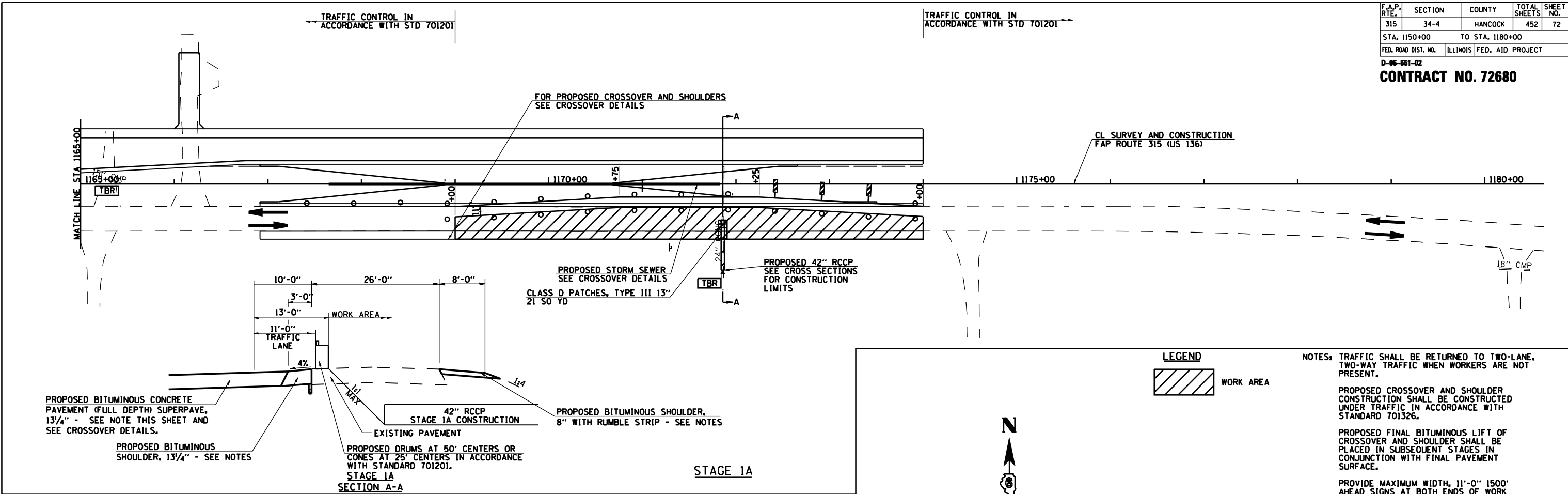


F.A.P. RTE.	SECTION	COUNTY	TOTAL SHEETS	SHEET NO.
315	34-4	HANCOCK	452	72
STA. 1150+00		TO STA. 1180+00		
FED. ROAD DIST. NO.		ILLINOIS FED. AID PROJECT		

CONTRACT NO. 72680



REVISIONS	
NAME	DATE

ILLINOIS DEPARTMENT OF TRANSPORTATION

FAP ROUTE 315 (US RTE 136)

TRAFFIC CONTROL DETAILS

CULVERT @ STA 1171+86.00

STAGE 1

SCALE: 1" = 50'-0"

DATE 1/31/06

DRAWN BY JCG

CHECKED BY AWM