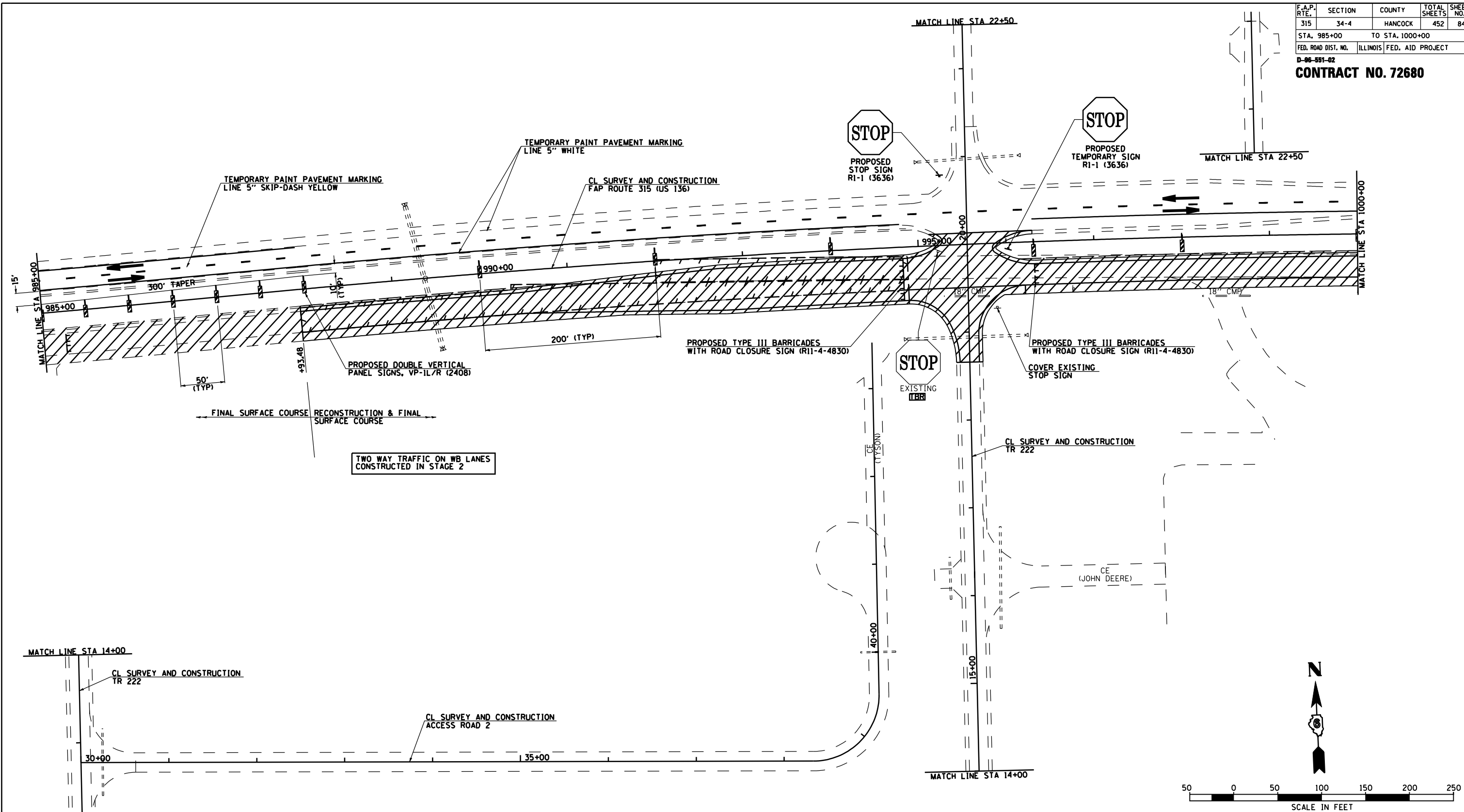


F.A.P. RTE.	SECTION	COUNTY	TOTAL SHEETS	SHEET NO.
315	34-4	HANCOCK	452	84
STA. 985+00		TO STA. 1000+00		
FED. ROAD DIST. NO.	ILLINOIS	FED. AID PROJECT		
D-96-991-02				
CONTRACT NO. 72680				



TWO WAY TRAFFIC ON WB LANES
CONSTRUCTED IN STAGE 2

LEGEND
 STAGE 3 WORK AREA

- NOTES:**
- CONSTRUCT FINAL SURFACE LIFT (PAVEMENT & SHOULDERS) ON EASTBOUND LANES DURING STAGE 3.
 - SEE INTERSECTION DETAILS FOR DETAILS ON STAGED CONSTRUCTION OF TR 222 UNDER TRAFFIC.
 - CONSTRUCT FINAL SURFACE LIFT (PAVEMENT & SHOULDERS) ON WESTBOUND LANES AFTER STAGE 3 IS COMPLETED AND TRAFFIC IS SWITCHED TO ITS FINAL POSITION.
 - TRAFFIC CONTROL AND PROTECTION IN ACCORDANCE WITH STANDARD 701001, 701006, 701011, & 701326.

REVISIONS	
NAME	DATE

ILLINOIS DEPARTMENT OF TRANSPORTATION
 FAP ROUTE 315 (US RTE 136)
 TRAFFIC CONTROL DETAILS
 AND STAGING DETAILS
 STAGE 3 PLAN
 STA 985+00 TO STA 1000+00
 SCALE: 1" = 50'-0"
 DATE 1/31/06
 DRAWN BY JCG
 CHECKED BY JRB