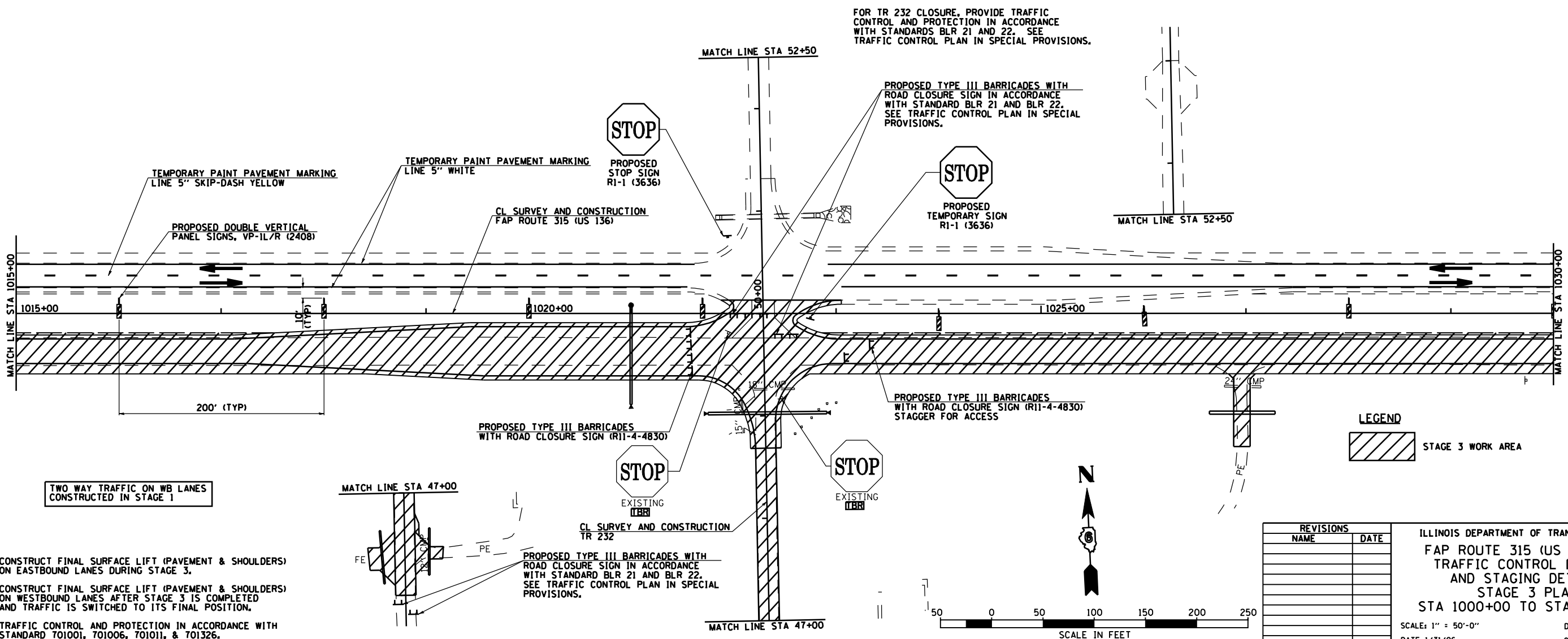
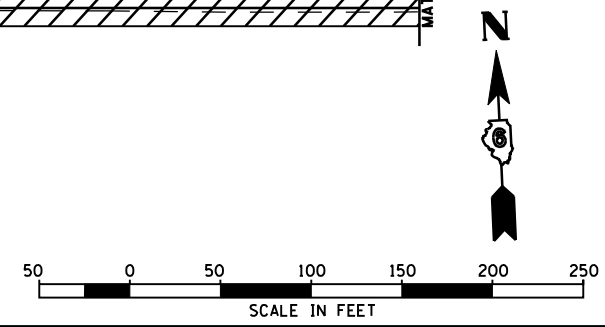
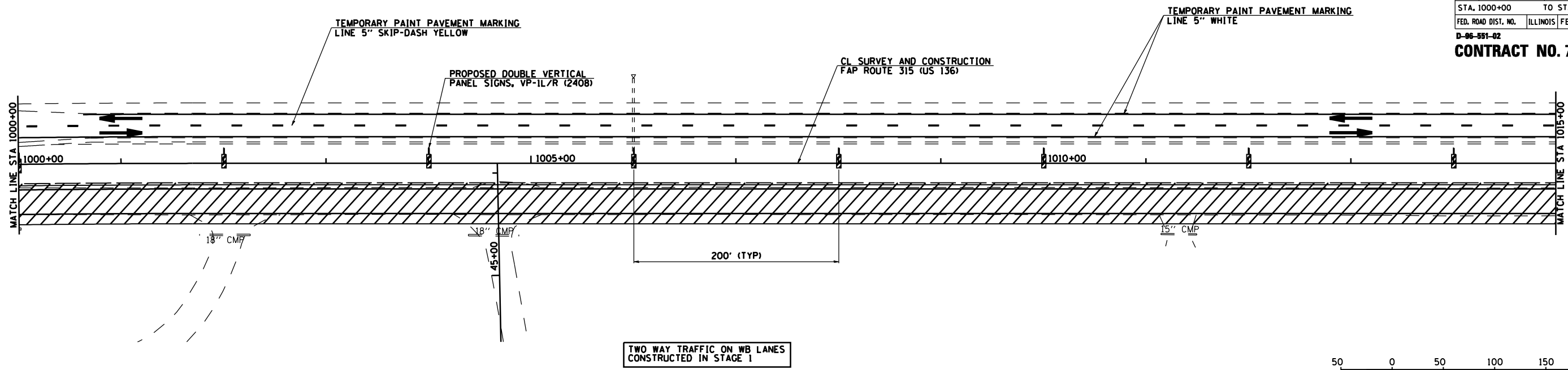


F.A.P. RTE.	SECTION	COUNTY	TOTAL SHEETS	SHEET NO.
315	34-4	HANCOCK	452	85
STA. 1000+00		TO STA. 1030+00		
FED. ROAD DIST. NO.	ILLINOIS	FED. AID PROJECT		
D-86-891-02				
<b>CONTRACT NO. 72680</b>				



NOTES:  
 1. CONSTRUCT FINAL SURFACE LIFT (PAVEMENT & SHOULDERS) ON EASTBOUND LANES DURING STAGE 3.  
 2. CONSTRUCT FINAL SURFACE LIFT (PAVEMENT & SHOULDERS) ON WESTBOUND LANES AFTER STAGE 3 IS COMPLETED AND TRAFFIC IS SWITCHED TO ITS FINAL POSITION.  
 3. TRAFFIC CONTROL AND PROTECTION IN ACCORDANCE WITH STANDARD 701001, 701006, 701011, & 701326.

REVISIONS	
NAME	DATE

ILLINOIS DEPARTMENT OF TRANSPORTATION  
 FAP ROUTE 315 (US RTE 136)  
 TRAFFIC CONTROL DETAILS  
 AND STAGING DETAILS  
 STAGE 3 PLAN  
 STA 1000+00 TO STA 1030+00  
 SCALE: 1" = 50'-0"  
 DATE 1/31/06  
 DRAWN BY JCG  
 CHECKED BY JRB