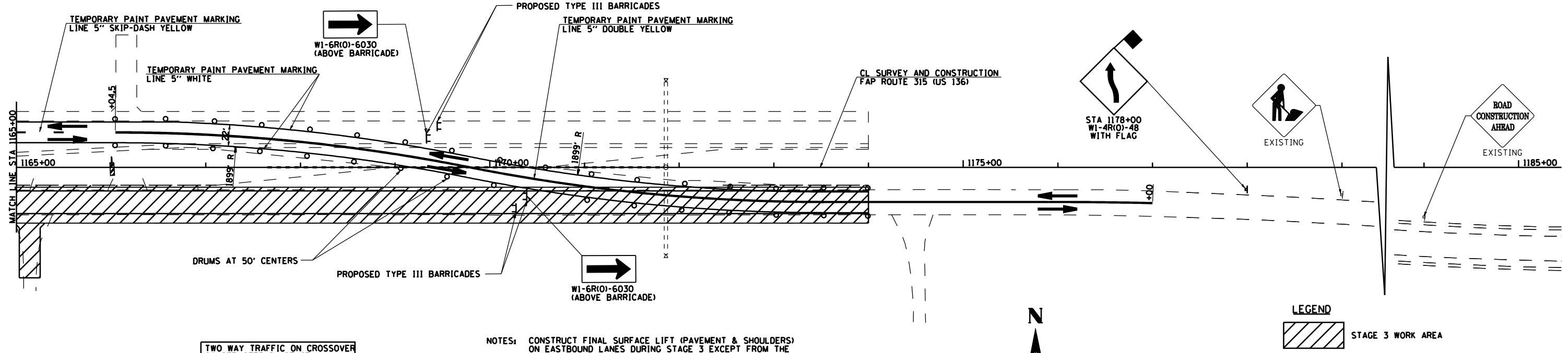


TWO WAY TRAFFIC ON WB LANES
CONSTRUCTED IN STAGE 1



TWO WAY TRAFFIC ON CROSSOVER
CONSTRUCTED IN STAGE 1

NOTES:

- CONSTRUCT FINAL SURFACE LIFT (PAVEMENT & SHOULDERS) ON EASTBOUND LANES DURING STAGE 3 EXCEPT FROM THE EAST END OF THE WEST FORK LA MOINE RIVER BRIDGE TO THE EAST PROJECT LIMITS. IN THIS AREA THE LEVELING BINDER AND LOWER LIFTS OF SHOULDERS WILL BE CONSTRUCTED. THE SURFACE LIFT AND THE TOP LIFT OF SHOULDERS WILL BE CONSTRUCTED BY OTHERS UNDER A SEPARATE CONTRACT
- CONSTRUCT FINAL SURFACE LIFT (PAVEMENT & SHOULDERS) ON WESTBOUND LANES AFTER STAGE 3 IS COMPLETED AND TRAFFIC IS SWITCHED TO ITS FINAL POSITION.
- TRAFFIC CONTROL AND PROTECTION IN ACCORDANCE WITH STANDARD 701001, 701006, 701011, & 701326.

REVISIONS	
NAME	DATE

ILLINOIS DEPARTMENT OF TRANSPORTATION
 FAP ROUTE 315 (US RTE 136)
 TRAFFIC CONTROL DETAILS
 AND STAGING DETAILS
 STAGE 3 PLAN
 STA 1150+00 TO STA 1180+00
 SCALE: 1" = 50'-0"
 DATE 1/31/06
 DRAWN BY JCG
 CHECKED BY JRB