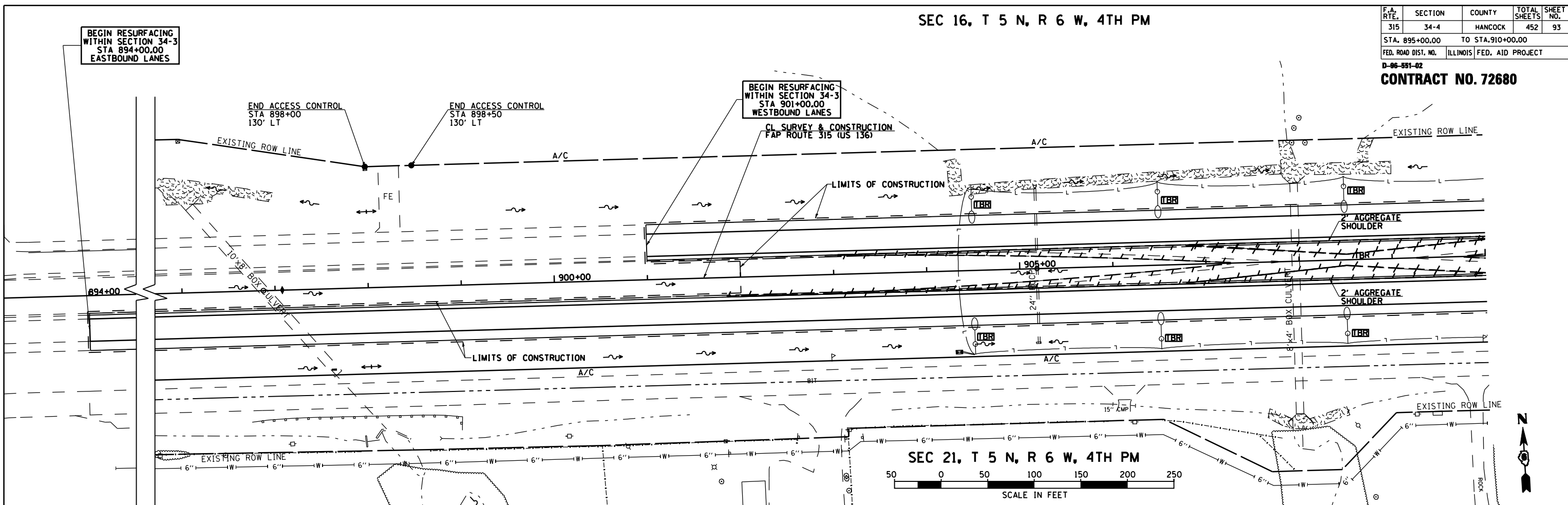


SEC 16, T 5 N, R 6 W, 4TH PM

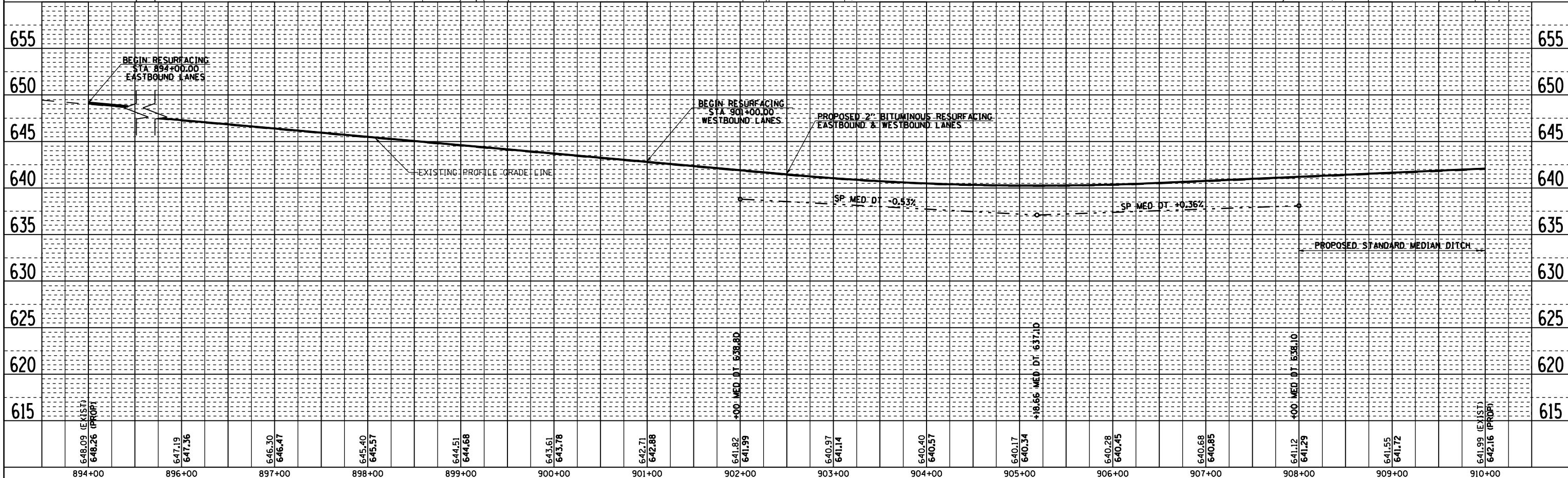
F.A. RTE.	SECTION	COUNTY	TOTAL SHEETS	SHEET NO.
315	34-4	HANCOCK	452	93
STA. 895+00.00 TO STA. 910+00.00				
FED. ROAD DIST. NO.		ILLINOIS FED. AID PROJECT		

D-86-891-02  
**CONTRACT NO. 72680**

PLAN	SURVEYED	BY	DATE
	PLOTTED		
	NOTED		
	NO. OF WAY CHECKED		
	NO.		



PROFILE	SURVEYED	BY	DATE
	PLOTTED		
	NOTED		
	NO. OF WAY CHECKED		
	NO.		



ROADWAY PLAN & PROFILE FAP 315 (US 136), STA 895+00.00 TO STA 910+00.00

2173PP00