

SEC 15, T 5 N, R 6 W, 4TH PM

F.A.P. RTE.	SECTION	COUNTY	TOTAL SHEETS	SHEET NO.
315	34-4	HANCOCK	452	99

STA. 970+00.00 TO STA. 985+00.00  
 FED. ROAD DIST. NO. ILLINOIS FED. AID PROJECT  
 D-96-991-02

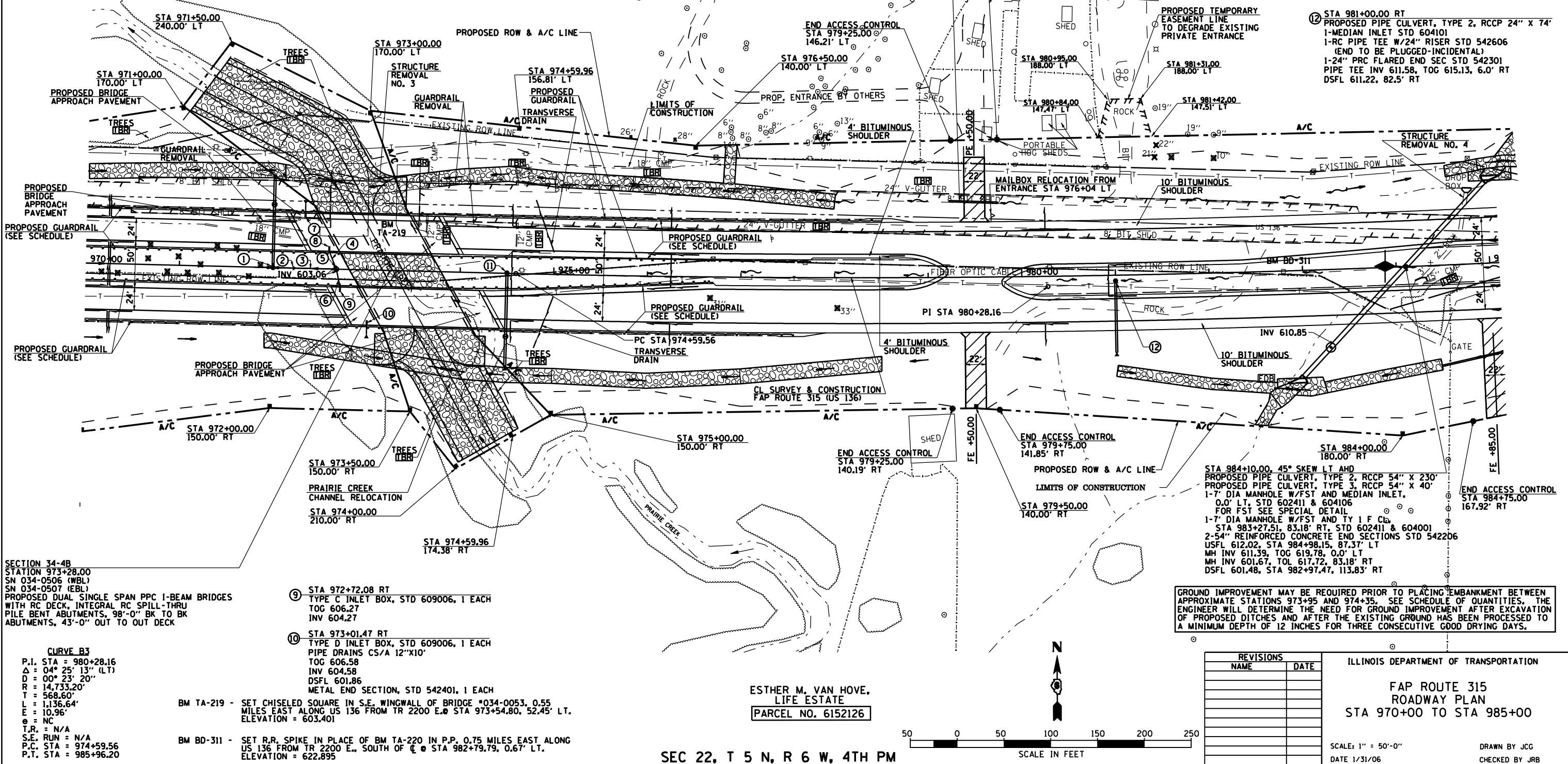
CONTRACT NO. 72680

- ① STA 972+00.00 LT  
 PROPOSED PIPE CULVERT, TYPE 2, RCCP 24" X 64"  
 PROPOSED PIPE CULVERT, TYPE 4, RCCP 24" X 26"  
 1-MEDIAN INLET STD 604101  
 1-RC PIPE TEE W/24" RISER STD 542606  
 (END TO BE PLUGGED-INCIDENTAL)  
 1-4" DIA MANHOLE W/FST TYPE I F CL. 67.5' LT  
 STD 602401, 602601 & 604001  
 1-24" PRC FLARED END SEC STD 542301  
 PIPE TEE INV 597.09, TOG 600.63, 0.0' LT  
 MH INV 587.69, TOL 602.79, 68.5' LT  
 DSFL 587.56, 95.2' LT
- ② 1-12" PRC FLARED END SECTION  
 STD 542301  
 DSFL 600.76
- ③ (12" x 40")  
 SS  
 TY 2
- ④ (12" x 20")  
 SS  
 TY 2

- ⑤ STA 972+67.64, 0.0' RT  
 MANHOLE (4" A-1-C)  
 W/FST STD 602401, 602601  
 TOL 605.73  
 INV 600.97
- ⑥ (12" x 20")  
 SS  
 TY 2
- ⑦ STA 972+33.34 LT  
 TYPE D INLET BOX, STD 609006, 1 EACH  
 PIPE DRAINS CS/A 12"X10"  
 TOG 605.92  
 INV 603.92  
 DSFL 601.20  
 METAL END SECTION, STD 542401, 1 EACH
- ⑧ STA 972+59.59 LT  
 TYPE C INLET BOX, STD 609006, 1 EACH  
 TOG 606.15  
 INV 604.15

MARK A. BURLING &  
 JONI M. BURLING  
 PARCEL NO. 6152125

- ⑪ STA 974+50.00 RT  
 PROPOSED PIPE CULVERT, TYPE 2, RCCP 24" X 64"  
 PROPOSED PIPE CULVERT, TYPE 4, RCCP 24" X 32"  
 1-MEDIAN INLET STD 604101  
 1-RC PIPE TEE W/24" RISER STD 542606  
 (END TO BE PLUGGED-INCIDENTAL)  
 1-4" DIA MANHOLE W/FST TYPE I F CL. 67.5' RT  
 STD 602401, 602601 & 604001  
 1-24" PRC FLARED END SEC STD 542301  
 PIPE TEE INV 602.61, TOG 605.60, 0.0' RT  
 MH INV 587.72, TOL 605.63, 68.5' RT  
 DSFL 587.57, 100.0' RT
- ⑫ STA 981+00.00 RT  
 PROPOSED PIPE CULVERT, TYPE 2, RCCP 24" X 74"  
 1-MEDIAN INLET STD 604101  
 1-RC PIPE TEE W/24" RISER STD 542606  
 (END TO BE PLUGGED-INCIDENTAL)  
 1-24" PRC FLARED END SEC STD 542301  
 PIPE TEE INV 611.58, TOG 615.13, 6.0' RT  
 DSFL 611.22, 82.5' RT



SECTION 34-4B  
 STATION 973+28.00  
 SN 034-0506 (WBL)  
 SN 034-0507 (EBL)  
 PROPOSED DUAL SINGLE SPAN PPC I-BEAM BRIDGES  
 WITH RC DECK, INTEGRAL RC SPILL-THRU  
 PILE BENT ABUTMENTS, 98'-0" BK TO BK  
 ABUTMENTS, 43'-0" OUT TO OUT DECK

CURVE B3  
 P.I. STA = 980+28.16  
 Δ = 04° 25' 13" (LT)  
 D = 00° 23' 20"  
 R = 14,733.20'  
 T = 568.60'  
 L = 1,136.64'  
 E = 10.96'  
 e = NC  
 T.R. = N/A  
 S.E. RUN = N/A  
 P.C. STA = 974+59.56  
 P.T. STA = 985+96.20

- ⑨ STA 972+72.08 RT  
 TYPE C INLET BOX, STD 609006, 1 EACH  
 TOG 606.27  
 INV 604.27
- ⑩ STA 973+01.47 RT  
 TYPE D INLET BOX, STD 609006, 1 EACH  
 PIPE DRAINS CS/A 12"X10"  
 TOG 606.58  
 INV 604.58  
 DSFL 601.86  
 METAL END SECTION, STD 542401, 1 EACH

- BM TA-219 - SET CHISELED SQUARE IN S.E. WINGWALL OF BRIDGE \*034-0053, 0.55 MILES EAST ALONG US 136 FROM TR 2200 E. @ STA 973+54.80, 52.45' LT. ELEVATION = 603.401
- BM BD-311 - SET R.R. SPIKE IN PLACE OF BM TA-220 IN P.P. 0.75 MILES EAST ALONG US 136 FROM TR 2200 E., SOUTH OF @ STA 982+79.79, 0.67' LT. ELEVATION = 622.895

ESTHER M. VAN HOVE,  
 LIFE ESTATE  
 PARCEL NO. 6152126

SEC 22, T 5 N, R 6 W, 4TH PM

GROUND IMPROVEMENT MAY BE REQUIRED PRIOR TO PLACING EMBANKMENT BETWEEN APPROXIMATE STATIONS 973+95 AND 974+35. SEE SCHEDULE OF QUANTITIES. THE ENGINEER WILL DETERMINE THE NEED FOR GROUND IMPROVEMENT AFTER EXCAVATION OF PROPOSED DITCHES AND AFTER THE EXISTING GROUND HAS BEEN PROCESSED TO A MINIMUM DEPTH OF 12 INCHES FOR THREE CONSECUTIVE GOOD DRYING DAYS.

REVISIONS	
NAME	DATE

ILLINOIS DEPARTMENT OF TRANSPORTATION  
 FAP ROUTE 315  
 ROADWAY PLAN  
 STA 970+00 TO STA 985+00  
 SCALE: 1" = 50'-0"  
 DATE 1/31/06  
 DRAWN BY JCG  
 CHECKED BY JRB

