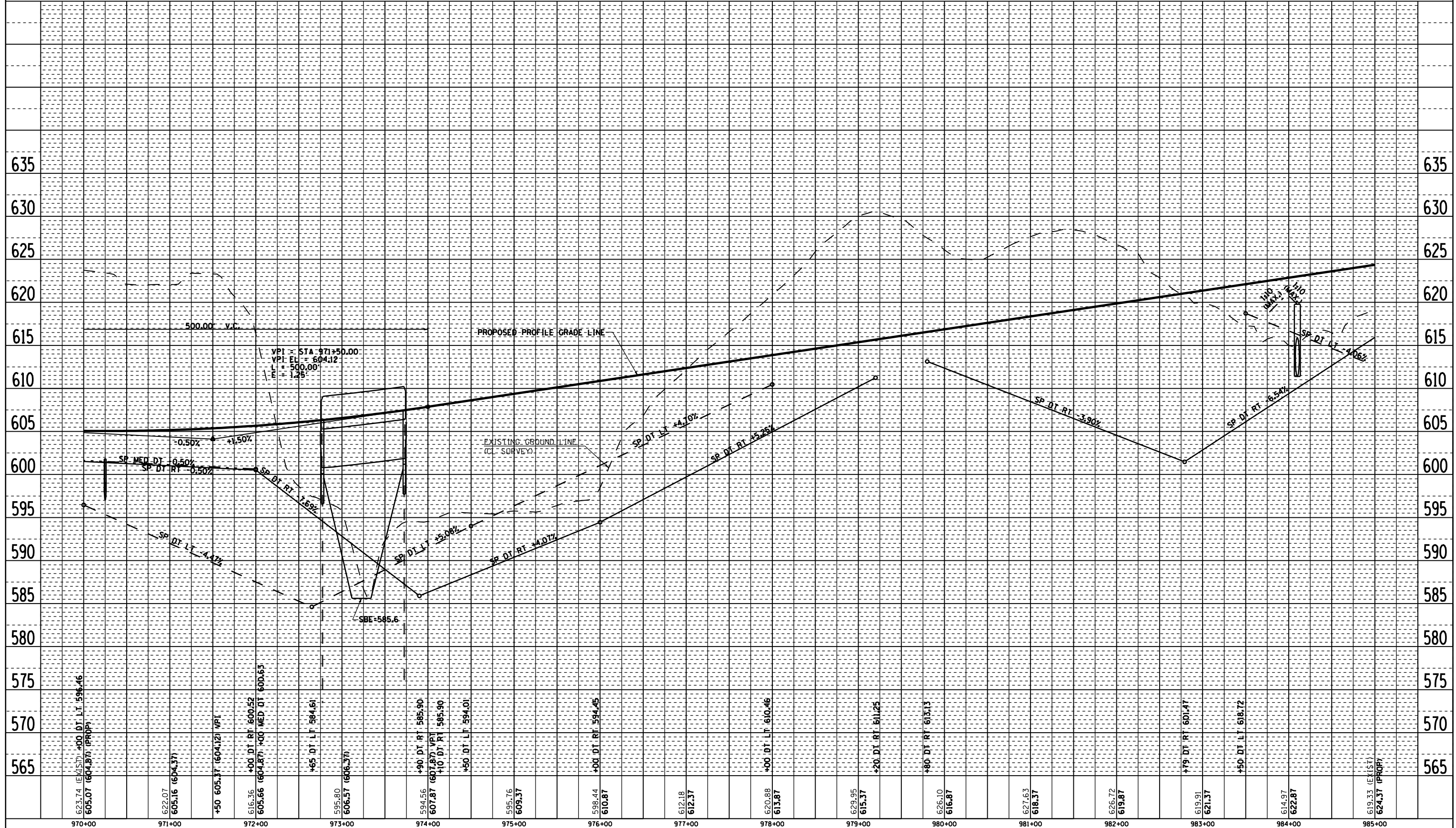


F.A.P. RTE.	SECTION	COUNTY	TOTAL SHEETS	SHEET NO.
315	34-4	HANCOCK	452	100
STA. 970+00.00		TO STA. 985+00.00		
FED. ROAD DIST. NO.		ILLINOIS FED. AID PROJECT		
D-88-581-02				
CONTRACT NO. 72680				

PLAN	DATE	BY
SURVEYED		
ALIGNED		
CHECKED		
DATE		
NO.		

PROFILE	DATE	BY
SURVEYED		
GRADES CHECKED		
NOTED		
DATE		
NO.		



2173PROF5 ROADWAY PROFILE FAP 315 (US 136), STA 970+00.00 TO STA 985+00.00