

ALTERNATIVE SUBGRADE TREATMENT MAY BE REQUIRED BETWEEN APPROXIMATE STATIONS 1056+50 AND 1061+50. SEE SCHEDULE OF QUANTITIES. THE ENGINEER WILL DETERMINE IF THE ALTERNATIVE TREATMENT IS REQUIRED FOLLOWING EXCAVATION TO THEORETICAL TOP OF SUBGRADE AND EXCAVATION OF PROPOSED DITCHES.

SEC 14, T 5 N, R 6 W, 4TH PM

HAROLD J. MASSIE & JEAN M. MASSIE
PARCEL NO. 6152134

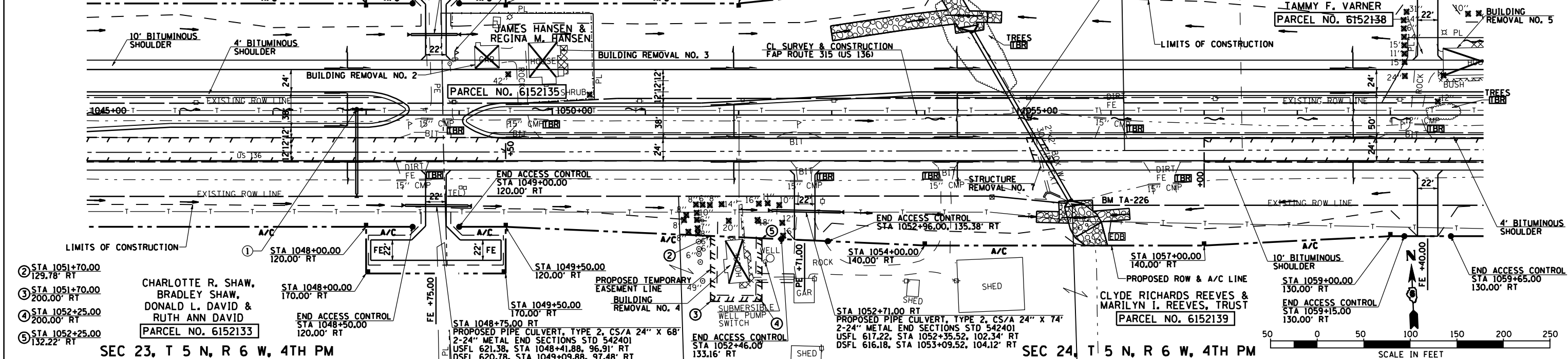
END ACCESS CONTROL STA 1048+50.00, 120.00' LT
STA 1048+00.00, 170.00' LT
STA 1048+00.00, 120.00' LT
STA 1049+00.00, 120.00' LT
STA 1049+50.00, 170.00' LT
MAILBOX RELOCATION
JAMES HANSEN & REGINA M. HANSEN
PARCEL NO. 6152135

JAMES A. GOODRICH, TRUSTEE, SEC 13, T 5 N, R 6 W, 4TH PM
WILLIAM E. GOODRICH & HELEN E. SMITH
PARCEL NO. 6152136

WILLIAM E. GOODRICH
PARCEL NO. 6152137
STA 1055+03.00, 30° SKEW RT AMD
PROPOSED PIPE CULVERT, TYPE 2, RCCP 48" X 210"
2-48" REINFORCED CONCRETE END SECTIONS STD 542206
USFL 613.76, STA 1054+51.26, 89.63' LT
DSFL 612.71, STA 1055+55.96, 91.73' RT
IAMMY F. VARNER
PARCEL NO. 6152138
END ACCESS CONTROL STA 1059+15.00, 140.00' LT
END ACCESS CONTROL STA 1059+65.00, 140.00' LT

F.A. RTE.	SECTION	COUNTY	TOTAL SHEETS	SHEET NO.
315	34-4	HANCOCK	452	105

STA. 1045+00.00 TO STA. 1060+00.00
ILLINOIS FED. AID PROJECT
D-96-991-02 CONTRACT NO. 72680

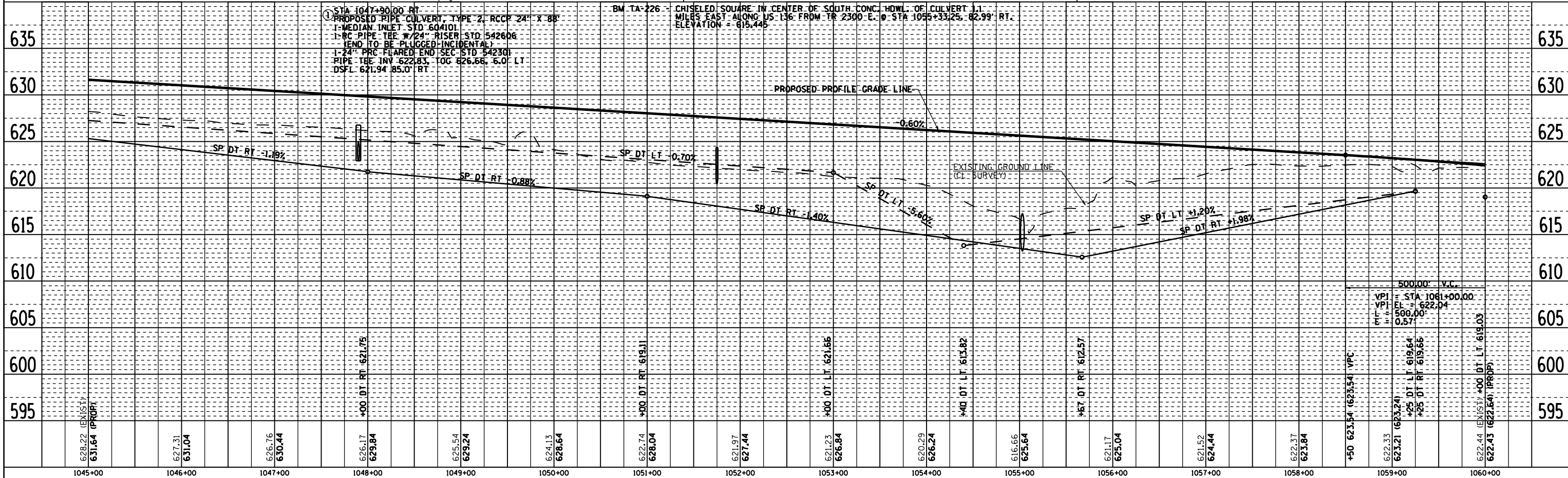


- ② STA 1051+70.00 129.78' RT
- ③ STA 1051+70.00 200.00' RT
- ④ STA 1052+25.00 200.00' RT
- ⑤ STA 1052+25.00 132.22' RT

CHARLOTTE R. SHAW, BRADLEY SHAW, DONALD L. DAVID & RUTH ANN DAVID
PARCEL NO. 6152133

SEC 23, T 5 N, R 6 W, 4TH PM

SEC 24, T 5 N, R 6 W, 4TH PM



ROADWAY PLAN & PROFILE FAP 315 (US 136), STA 1045+00.00 TO STA 1060+00.00

DATE	BY	REVISION

DATE	BY	REVISION