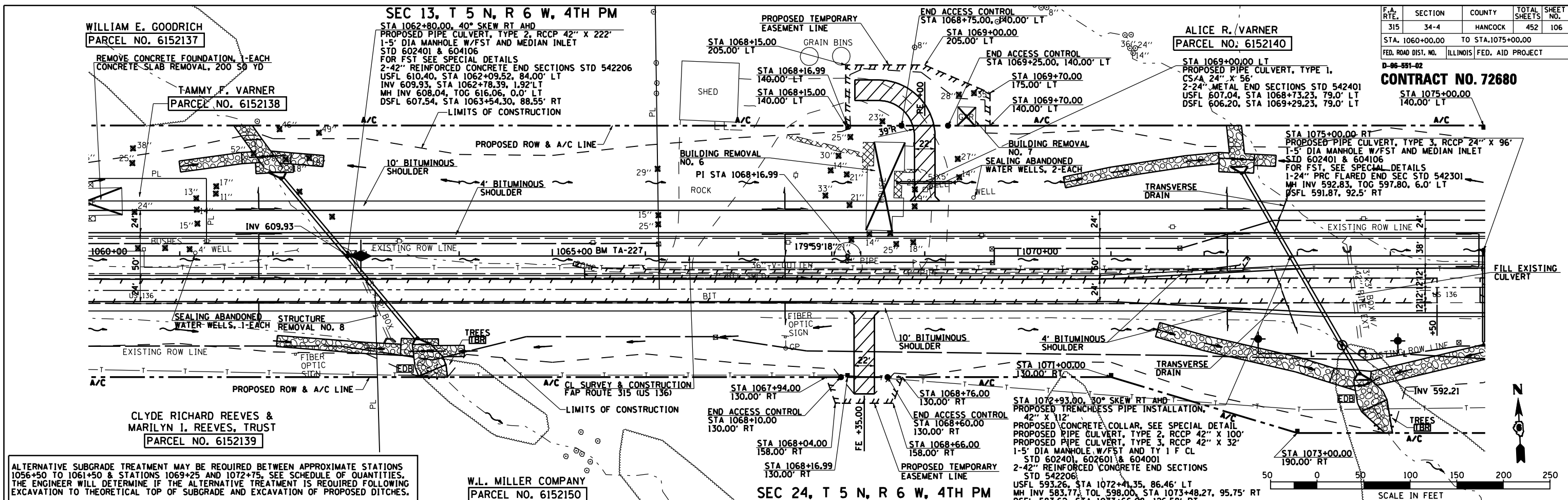


DATE	
BY	
REVIEWED	
PLANNED	
NOTED	
NO.	

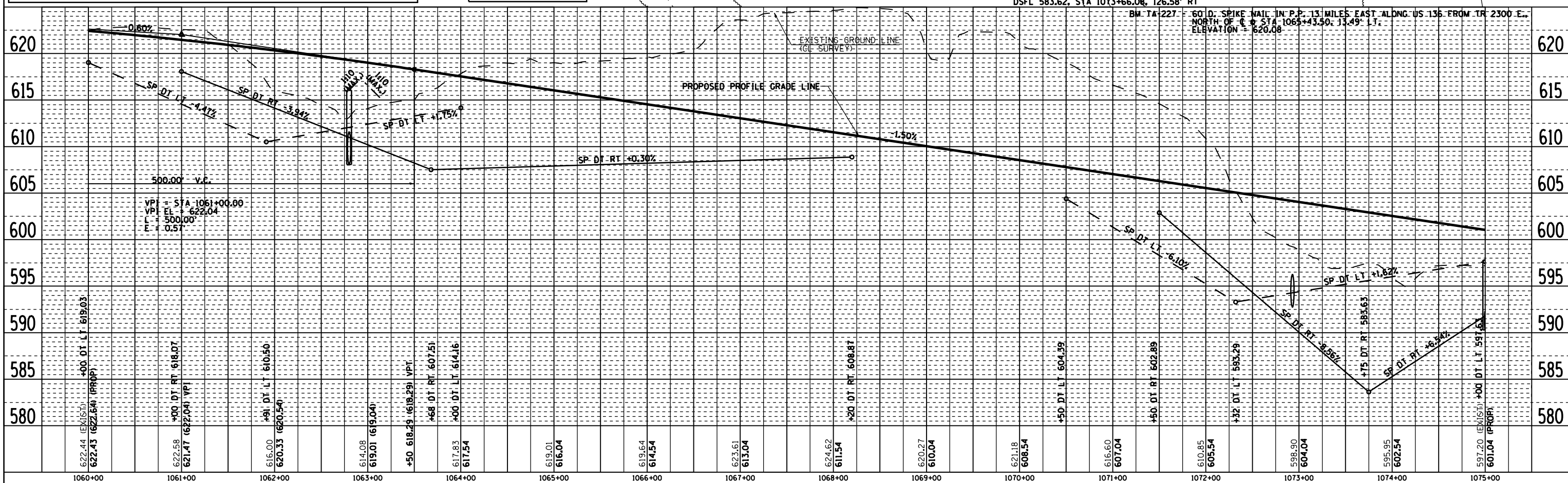
DATE	
BY	
REVIEWED	
PLANNED	
NOTED	
NO.	

F.A. RTE.	SECTION	COUNTY	TOTAL SHEETS	SHEET NO.
315	34-4	HANCOCK	452	106

STA. 1060+00.00 TO STA. 1075+00.00
 FED. ROAD DIST. NO. ILLINOIS FED. AID PROJECT
 D-96-391-02
CONTRACT NO. 72680
 STA 1075+00.00
 140.00' LT



ALTERNATIVE SUBGRADE TREATMENT MAY BE REQUIRED BETWEEN APPROXIMATE STATIONS 1056+50 TO 1061+50 & STATIONS 1069+25 AND 1072+75. SEE SCHEDULE OF QUANTITIES. THE ENGINEER WILL DETERMINE IF THE ALTERNATIVE TREATMENT IS REQUIRED FOLLOWING EXCAVATION TO THEORETICAL TOP OF SUBGRADE AND EXCAVATION OF PROPOSED DITCHES.



ROADWAY PLAN & PROFILE FAP 315 (US 136), STA 1060+00.00 TO STA 1075+00.00

2173PPI1