

ALICE R. VARNER
PARCEL NO. 6152140

END ACCESS CONTROL
STA 1076+25.00
152.50' LT

POT STA 1076+04.07 FAP 315 (US 136) =
POT STA 60+00.00 2450E (CH 28)
SEE INTERSECTION DETAIL

LIMITS OF CONSTRUCTION
STA 1079+00.00
180.00' LT

STA 1079+60.00 0° SKEW
PROPOSED PIPE CULVERT, TYPE 2, RCCP 30" X 186'
1-5' DIA MANHOLE W/FST AND TY 1 F CL. 79.25' RT
STD 602401, 602601 & 604001
2-30" PRC FLARED END SECTIONS STD 542301
USFL 587.03, 86.75' LT
MH INV 580.28, TOL 590.91, 77.70' RT
DSFL 580.16, 104.25' RT

STA 1083+20.00 0° SKEW
PROPOSED TRENCHLESS PIPE INSTALLATION, 36" X 74'
PROPOSED PIPE CULVERT, TYPE 2, RCCP 36" X 106'
1-5' DIA MANHOLE W/FST AND MEDIAN INLET, 0.0' LT
STD 602401 & 604106
FOR FST, SEE SPECIAL DETAILS
1-5' DIA MANHOLE W/FST AND TY 1 F CL. 78.5' RT
STD 602401, 602601 & 604001
2-36" PRC FLARED END SECTIONS STD 542301
USFL 584.66, 81.12' LT
INV 584.27, 2.50' LT
MH INV 584.17, TOL 589.34, 0.0' LT
MH INV 577.29, TOL 589.06, 77.0' RT
DSFL 577.17, 103.65' RT

RODGER D. THOMPSON
& WENDY M. THOMPSON
PARCEL NO. 6152141

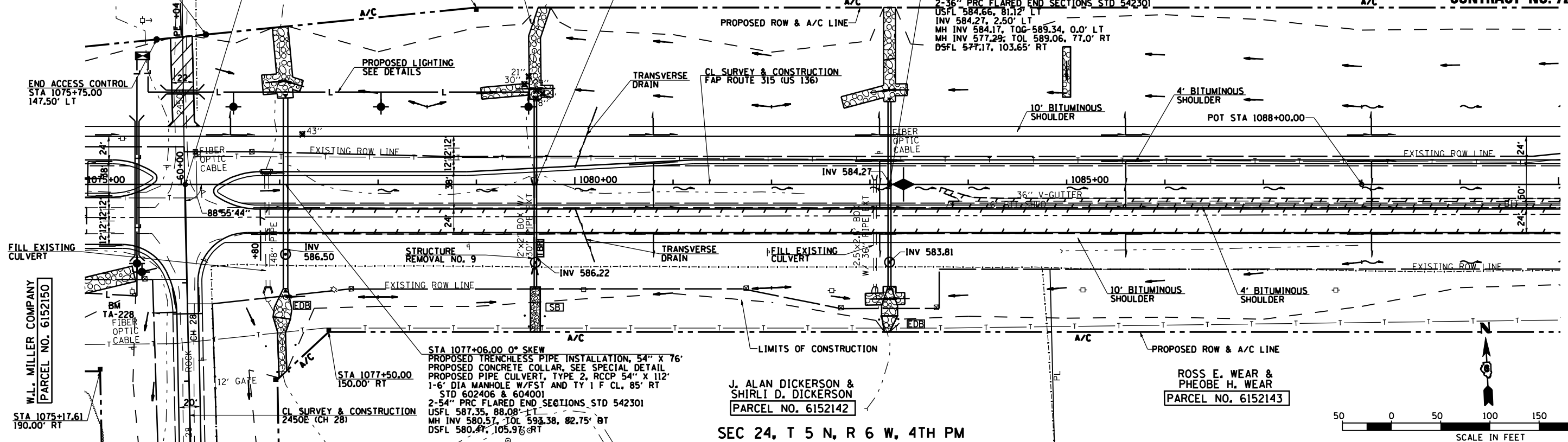
SEC 13, T 5 N,
R 6 W, 4TH PM

F.A. RTE.	SECTION	COUNTY	TOTAL SHEETS	SHEET NO.
315	34-4	HANCOCK	452	107
STA. 1075+00.00		TO STA. 1090+00.00		
FED. ROAD DIST. NO.		ILLINOIS FED. AID PROJECT		

D-96-391-02
CONTRACT NO. 72680

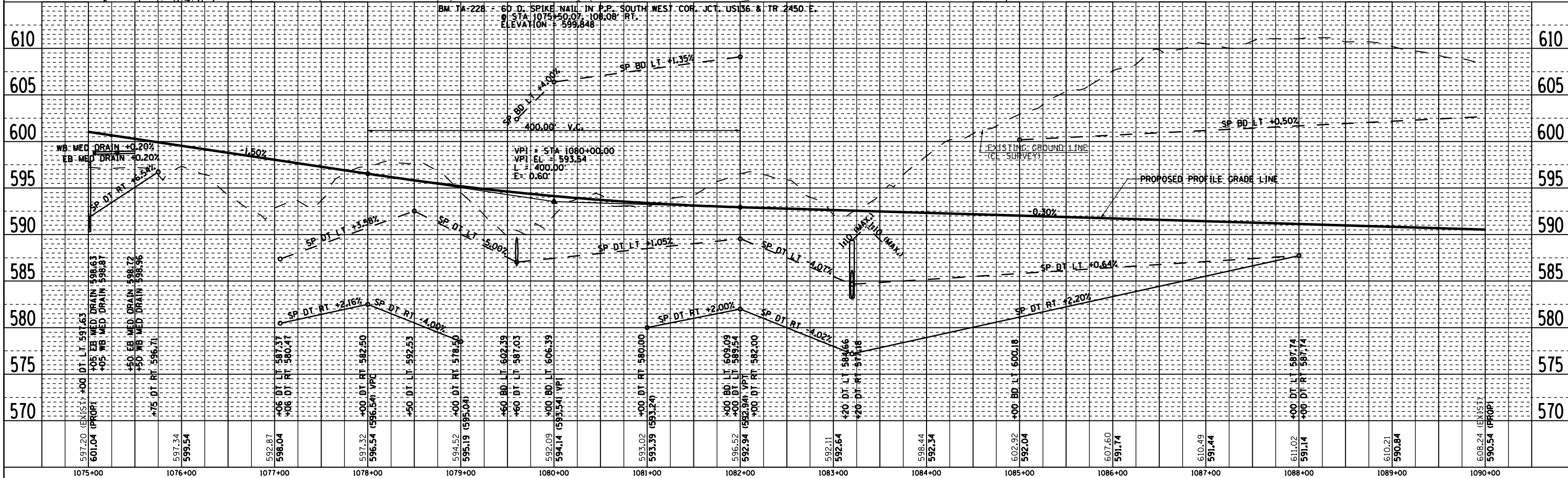
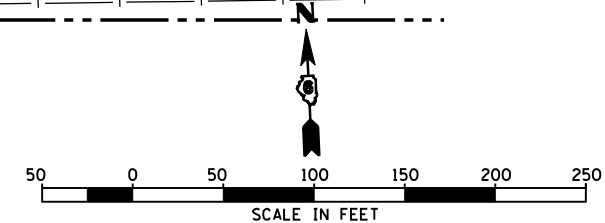
DATE	BY

DATE	BY



SEC 24, T 5 N, R 6 W, 4TH PM

ROSS E. WEAR &
PHEOBIE H. WEAR
PARCEL NO. 6152143



ROADWAY PLAN & PROFILE FAP 315 (US 136), STA 1075+00.00 TO STA 1090+00.00

2173PP12