

SEC 13, T 5 N, R 6 W, 4TH PM

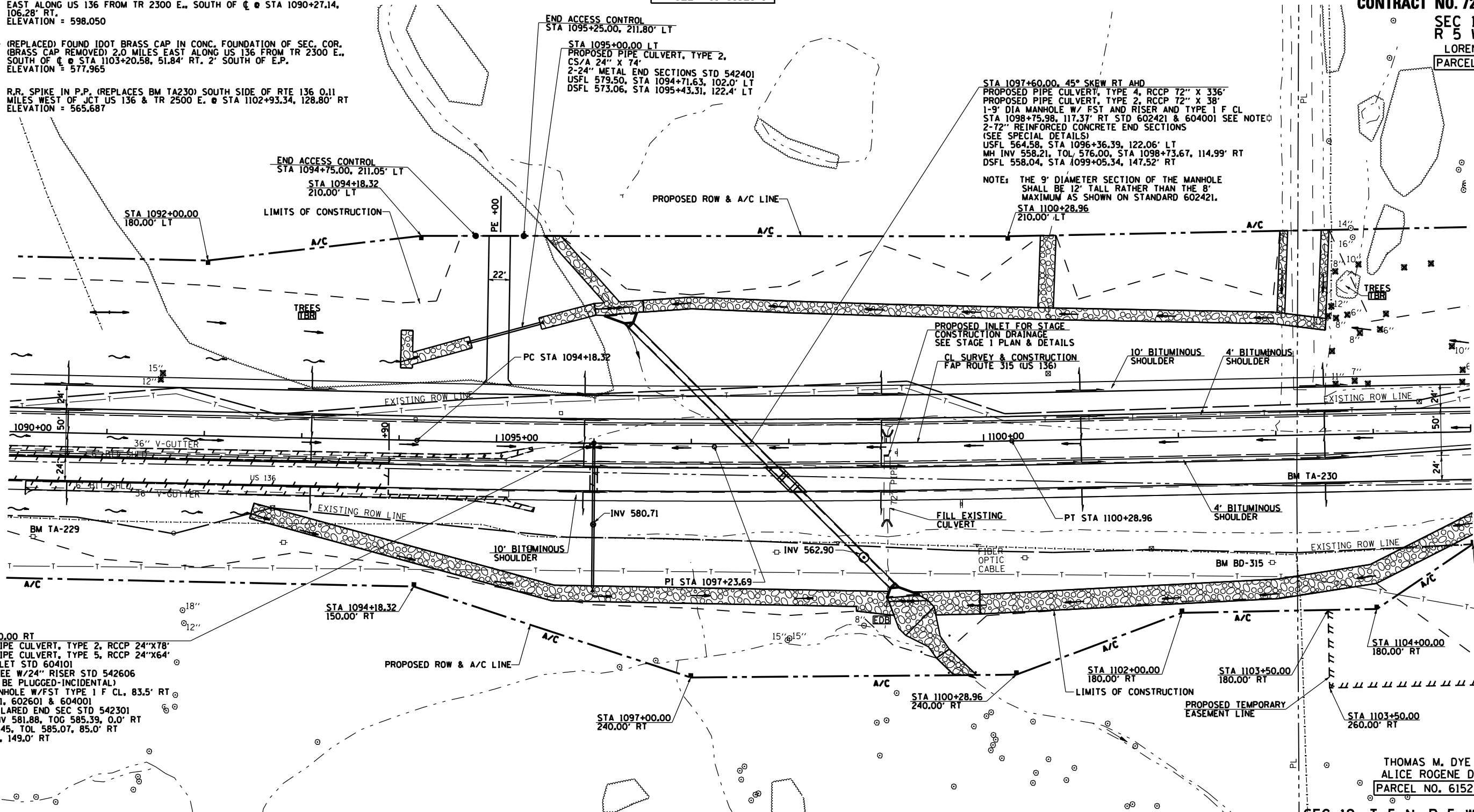
RODGER D. THOMPSON
& WENDY M. THOMPSON
PARCEL NO. 6152141

GROUND IMPROVEMENT MAY BE REQUIRED PRIOR TO PLACING EMBANKMENT BETWEEN APPROXIMATE STATIONS 1096+50 AND 1098+50 & STATIONS 1096+50 AND 1100+50 SEE SCHEDULE OF QUANTITIES. THE ENGINEER WILL DETERMINE THE NEED FOR GROUND IMPROVEMENT AFTER EXCAVATION OF PROPOSED DITCHES AND AFTER THE EXISTING GROUND HAS BEEN PROCESSED TO A MINIMUM DEPTH OF 12 INCHES FOR THREE CONSECUTIVE GOOD DRYING DAYS.

F.A.P. RTE.	SECTION	COUNTY	TOTAL SHEETS	SHEET NO.
315	34-4	HANCOCK	452	108
STA. 1090+00.00		TO STA. 1105+00.00		
FED. ROAD DIST. NO.		ILLINOIS	FED. AID PROJECT	

D-96-991-02
CONTRACT NO. 72680
SEC 18, T 5 N,
R 5 W, 4TH PM
LOREN E. THOMAS
PARCEL NO. 6152144

- BM TA-229 - 5' NORTH OF ABOVE COORDINATES. 60 D. SPIKE NAIL IN P.P. 1.80 MILES EAST ALONG US 136 FROM TR 2300 E., SOUTH OF C @ STA 1090+27.14, 106.28' RT, ELEVATION = 598.050
- BM TA-230 - (REPLACED) FOUND IDOT BRASS CAP IN CONC. FOUNDATION OF SEC. COR. (BRASS CAP REMOVED) 2.0 MILES EAST ALONG US 136 FROM TR 2300 E., SOUTH OF C @ STA 1103+20.58, 51.84' RT, 2' SOUTH OF E.P. ELEVATION = 577.965
- BM BD-315 - R.R. SPIKE IN P.P. (REPLACES BM TA230) SOUTH SIDE OF RTE 136 0.11 MILES WEST OF JCT US 136 & TR 2500 E. @ STA 1102+93.34, 128.80' RT ELEVATION = 565.687

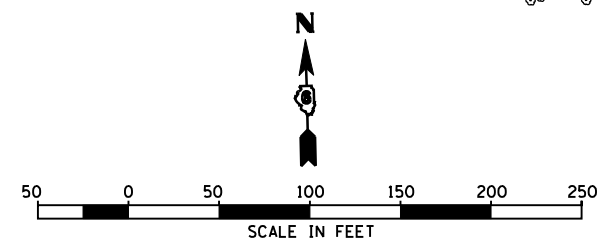


STA 1096+00.00 RT
PROPOSED PIPE CULVERT, TYPE 2, RCCP 24"x78"
PROPOSED PIPE CULVERT, TYPE 5, RCCP 24"x64"
1-MEDIAN INLET STD 604101
1-RC PIPE TEE W/24" RISER STD 542606
(END TO BE PLUGGED-INCIDENTAL)
1-5' DIA MANHOLE W/FST TYPE I F CL, 83.5' RT
STD 602401, 602601 & 604001
1-24" PRC FLARED END SEC STD 542301
PIPE TEE INV 581.88, TOG 585.39, 0.0' RT
MH INV 562.45, TOL 585.07, 85.0' RT
DSFL 561.50, 149.0' RT

CURVE B5
P.I. STA = 1097+23.69
Δ = 02° 22' 29" (LT)
D = 00° 23' 20"
R = 14,733.20'
T = 305.37'
L = 610.64'
E = 3.16'
e = N/C
T.R. = N/A
S.E. RUN = N/A
P.C. STA = 1094+18.32
P.T. STA = 1100+28.96

ROSS E. WEAR & PHEOBE H. WEAR
PARCEL NO. 6152143

SEC 24, T 5 N, R 6 W, 4TH PM



REVISIONS	
NAME	DATE

SEC 19, T 5 N, R 5 W, 4TH PM

ILLINOIS DEPARTMENT OF TRANSPORTATION
FAP ROUTE 315
ROADWAY PLAN
STA 1090+00 TO STA 1105+00

SCALE: 1" = 50'-0"
DATE 3/15/06
DRAWN BY JCG
CHECKED BY JRB