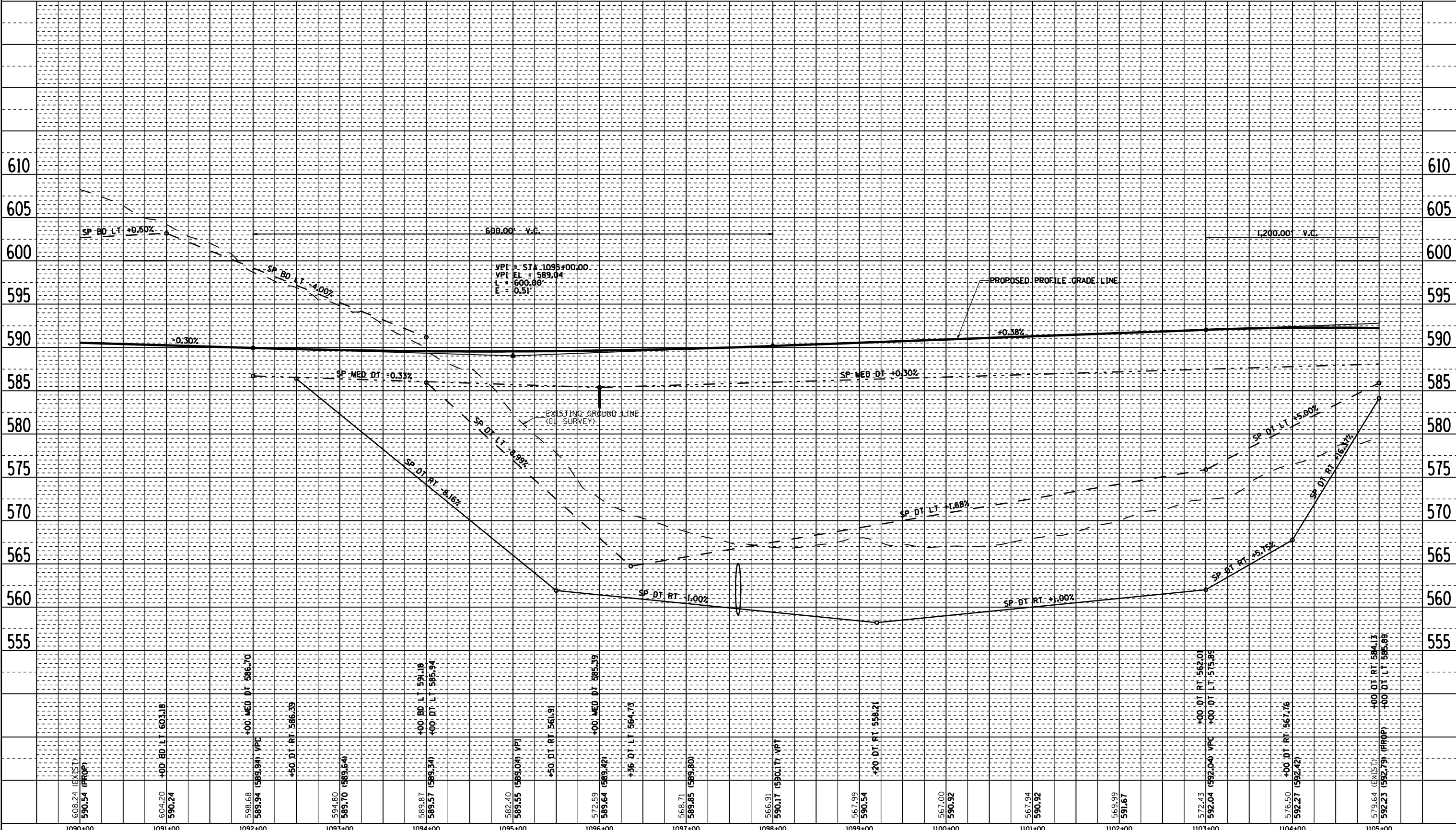


F.A.P. RTE.	SECTION	COUNTY	TOTAL SHEETS	SHEET NO.
315	34-4	HANCOCK	452	109
STA. 1090+00.00 TO STA. 1105+00.00				
FED. ROAD DIST. NO.		ILLINOIS FED. AID PROJECT		
D-88-881-02				

CONTRACT NO. 72680

PLAN	BY	DATE
SURVEYED		
ALIGNED		
CHECKED		
DATE		

PROFILE	BY	DATE
SURVEYED		
GRADES CHECKED		
NOTED		
DATE		



2173PROF13 ROADWAY PROFILE FAP 315 (US 136), STA 1090+00.00 TO STA 1105+00.00