

GROUND IMPROVEMENT MAY BE REQUIRED PRIOR TO PLACING EMBANKMENT BETWEEN APPROXIMATE STATIONS 1124+00 AND 1150+60. SEE SCHEDULE OF QUANTITIES. THE ENGINEER WILL DETERMINE THE NEED FOR GROUND IMPROVEMENT AFTER EXCAVATION OF PROPOSED DITCHES AND AFTER THE EXISTING GROUND HAS BEEN PROCESSED TO A MINIMUM DEPTH OF 12 INCHES FOR THREE CONSECUTIVE GOOD DRYING DAYS.

SEC 18, T 5 N, R 5 W, 4TH PM

ILLINOIS DEPARTMENT OF TRANSPORTATION

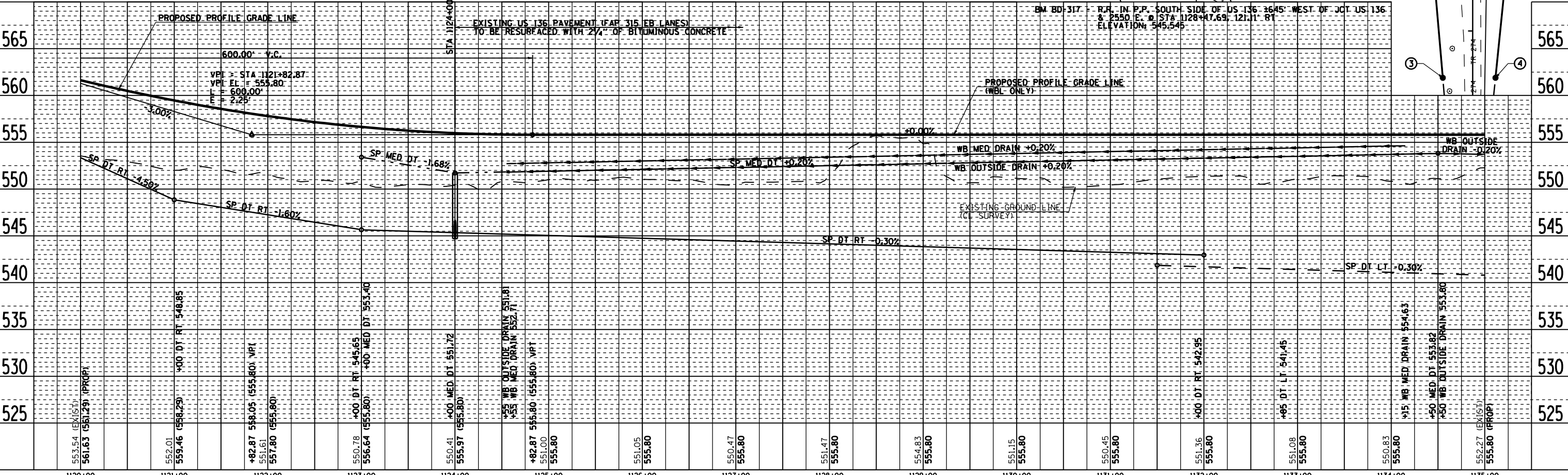
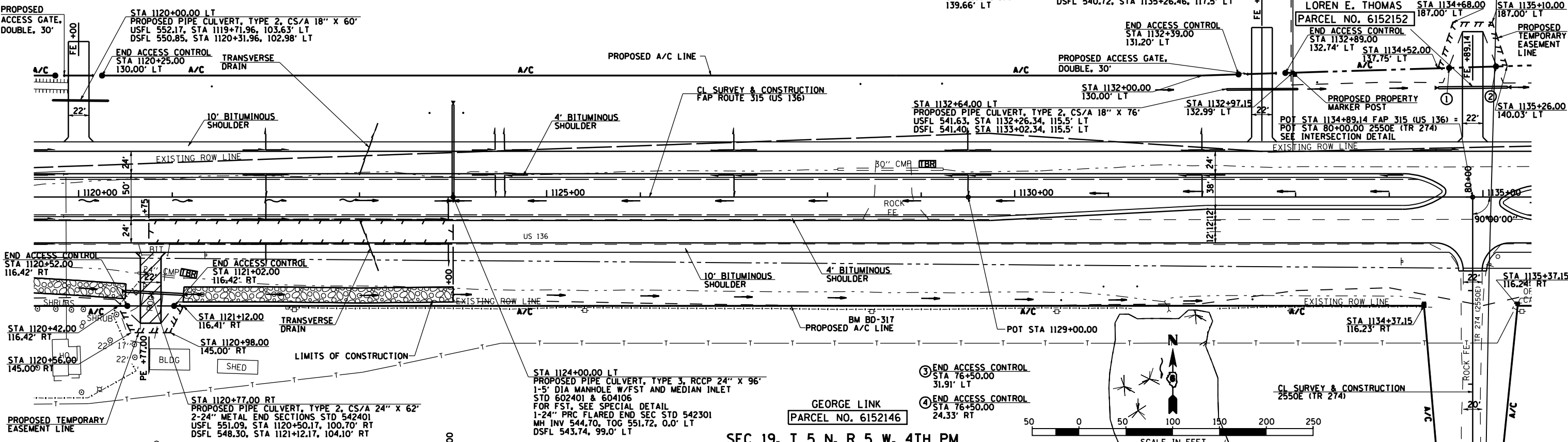
- ① END ACCESS CONTROL STA 1134+64.00 138.12' LT
- ② END ACCESS CONTROL STA 1135+14.00 139.66' LT

STA 1134+89.14 LT
 PROPOSED PIPE CULVERT, TYPE 2, CS/A 24" X 74"
 2-24" METAL END SECTIONS STD 542401
 USFL 540.94, STA 1134+52.46, 116.9' LT
 DSFL 540.72, STA 1135+26.46, 117.5' LT

CONTRACT NO. 72680

D-96-581-02	F.A. RTE.	SECTION	COUNTY	TOTAL SHEETS	SHEET NO.
	315	34-4	HANCOCK	452	112
STA. 1120+00.00		TO STA. 1135+00.00			
ILLINOIS FED. AID PROJECT					

LOREN E. THOMAS
 PARCEL NO. 6152152
 STA 1134+68.00 187.00' LT
 STA 1135+10.00 187.00' LT



ROADWAY PLAN & PROFILE FAP 315 (US 136), STA 1120+00.00 TO STA 1135+00.00

DATE	BY

DATE	BY

2173PP15