

SEC 18, T 5 N, R 5 W, 4TH PM

LOREN E. THOMAS

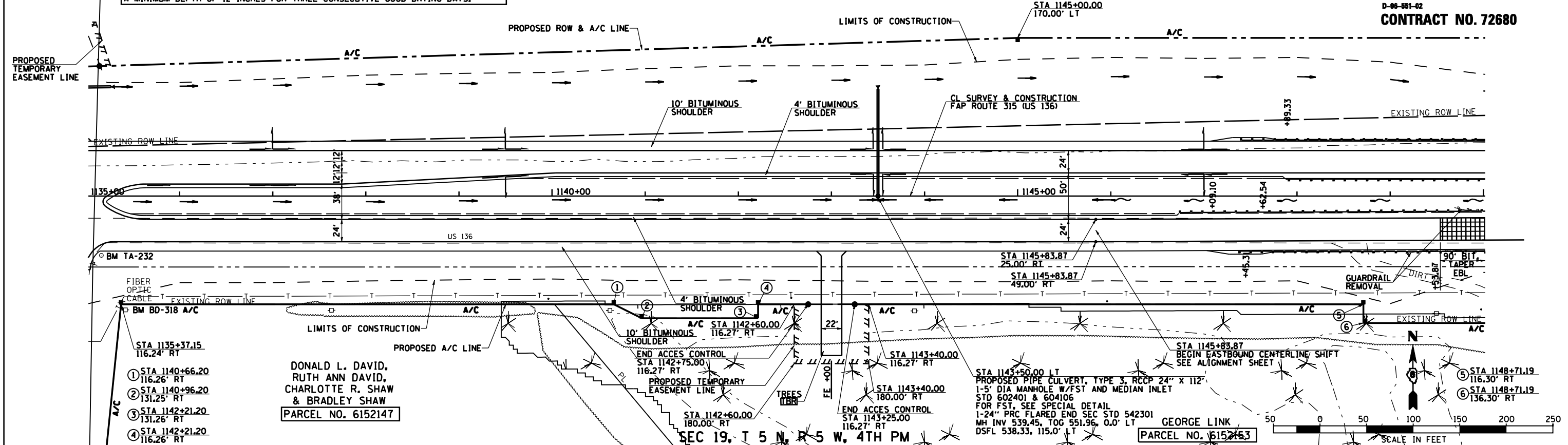
PARCEL NO. 6152152

F.A. RTE.	SECTION	COUNTY	TOTAL SHEETS	SHEET NO.
315	34-4	HANCOCK	452	113

STA. 1135+00.00 TO STA. 1150+00.00  
 FED. ROAD DIST. NO. ILLINOIS FED. AID PROJECT

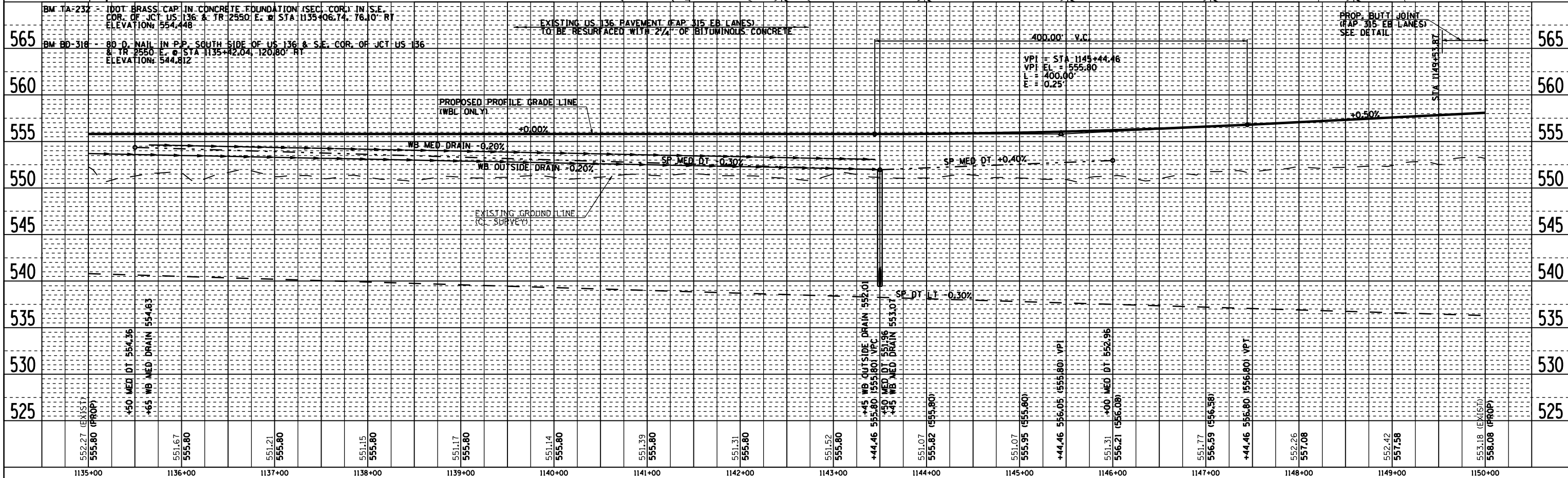
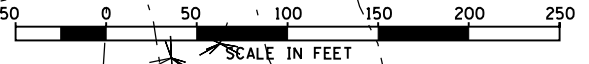
D-96-991-02  
**CONTRACT NO. 72680**

GROUND IMPROVEMENT MAY BE REQUIRED PRIOR TO PLACING EMBANKMENT BETWEEN APPROXIMATE STATIONS 1124+00 AND 1150+60. SEE SCHEDULE OF QUANTITIES. THE ENGINEER WILL DETERMINE THE NEED FOR GROUND IMPROVEMENT AFTER EXCAVATION OF PROPOSED DITCHES AND AFTER THE EXISTING GROUND HAS BEEN PROCESSED TO A MINIMUM DEPTH OF 12 INCHES FOR THREE CONSECUTIVE GOOD DRYING DAYS.



DONALD L. DAVID,  
 RUTH ANN DAVID,  
 CHARLOTTE R. SHAW  
 & BRADLEY SHAW  
 PARCEL NO. 6152147

STA 1143+50.00 LT  
 PROPOSED PIPE CULVERT, TYPE 3, RCCP 24" X 112"  
 1-5' DIA MANHOLE W/FST AND MEDIAN INLET  
 STD 602401 & 604106  
 FOR FST, SEE SPECIAL DETAIL  
 1-24" PRC FLARED END SEC STD 542301  
 MH INV 539.45, TOG 551.96, 0.0' LT  
 DSFL 538.33, 115.0' LT



ROADWAY PLAN & PROFILE FAP 315 (US 136), STA 1135+00.00 TO STA 1150+00.00

PLAN	DATE
SURVEYED	
PLOTTED	
CHECKED	
BY	
NO. OF WAY CHECKED	
CADD FILE NAME	

PROFILE	DATE
SURVEYED	
PLOTTED	
CHECKED	
BY	
NO. OF WAY CHECKED	
STRUCTURE NOTATIONS CHRD	