

SEC 17, T 5 N, R 5 W, 4TH PM

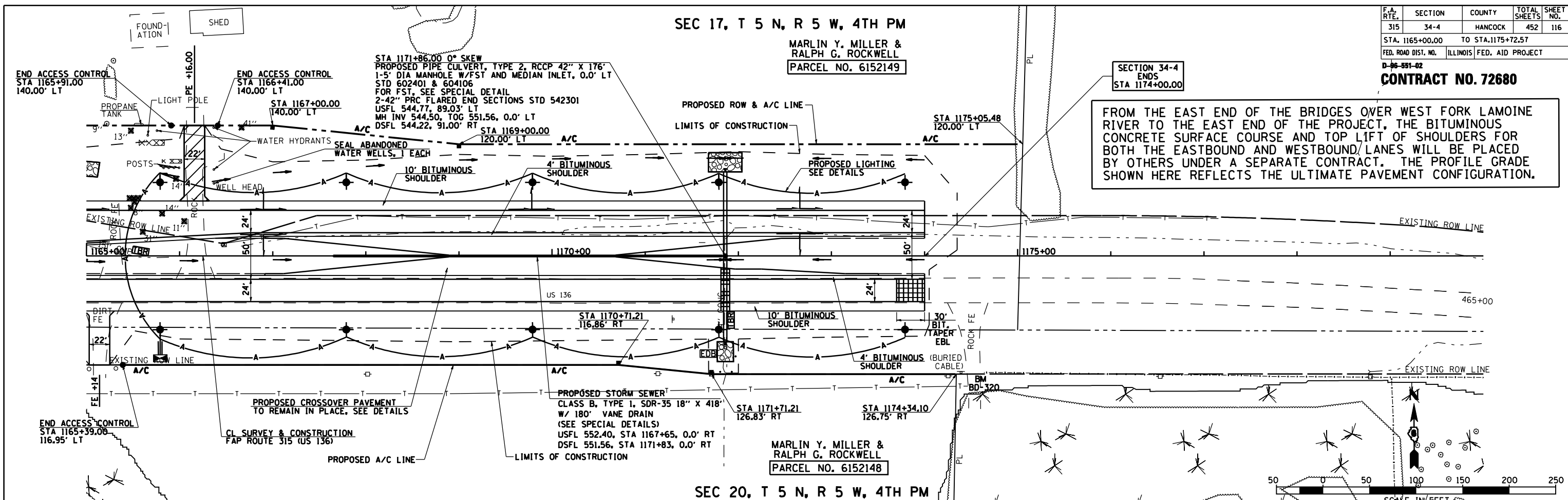
MARLIN Y. MILLER &  
RALPH G. ROCKWELL  
PARCEL NO. 6152149

| F.A. RTE. | SECTION | COUNTY  | TOTAL SHEETS | SHEET NO. |
|-----------|---------|---------|--------------|-----------|
| 315       | 34-4    | HANCOCK | 452          | 116       |

STA. 1165+00.00 TO STA. 1175+72.57  
FED. ROAD DIST. NO. ILLINOIS FED. AID PROJECT

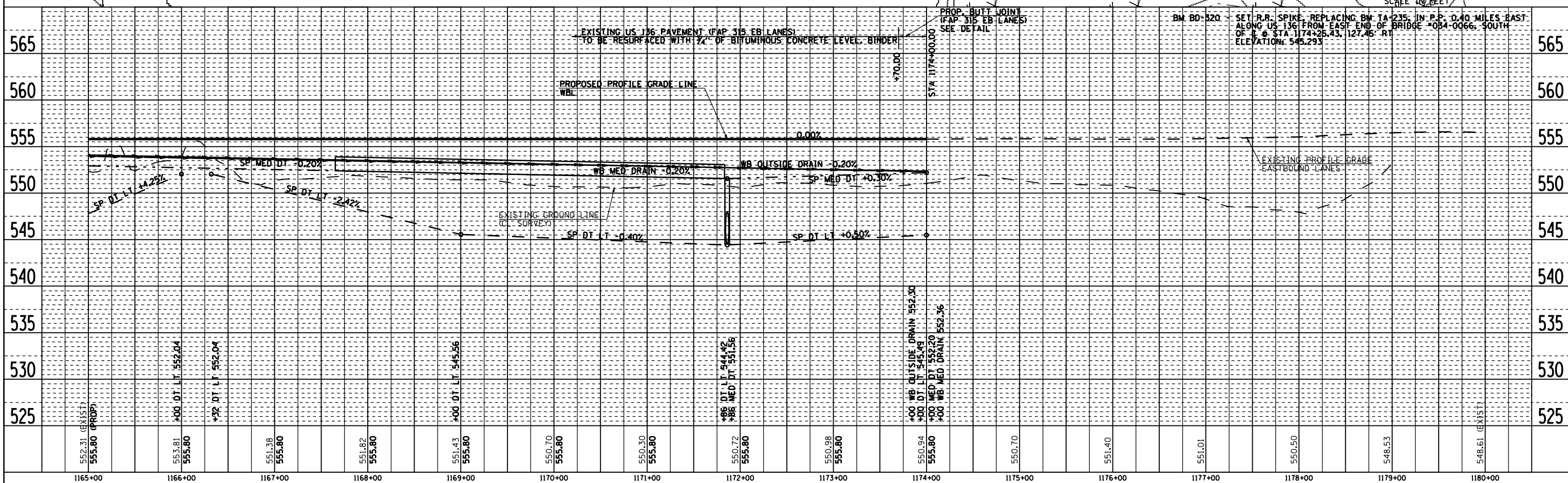
CONTRACT NO. 72680

FROM THE EAST END OF THE BRIDGES OVER WEST FORK LAMOINE RIVER TO THE EAST END OF THE PROJECT, THE BITUMINOUS CONCRETE SURFACE COURSE AND TOP LIFT OF SHOULDERS FOR BOTH THE EASTBOUND AND WESTBOUND LANES WILL BE PLACED BY OTHERS UNDER A SEPARATE CONTRACT. THE PROFILE GRADE SHOWN HERE REFLECTS THE ULTIMATE PAVEMENT CONFIGURATION.



SEC 20, T 5 N, R 5 W, 4TH PM

MARLIN Y. MILLER &  
RALPH G. ROCKWELL  
PARCEL NO. 6152148



ROADWAY PLAN & PROFILE FAP 315 (US 136), STA 1165+00.00 TO STA 1175+72.57

| DATE | BY | REVISION |
|------|----|----------|
|      |    |          |

| DATE | BY | REVISION |
|------|----|----------|
|      |    |          |

2173PP18