

SEC 15, T 5 N, R 6 W, 4TH PM

DAN C. BRYAN & SHARON K. BRYAN
PARCEL NO. 6152123

POT STA 10+00.00 2200E (TR 198) =
POT STA 942+86.48 FAP 315 (US 136)
SEE INTERSECTION DETAIL

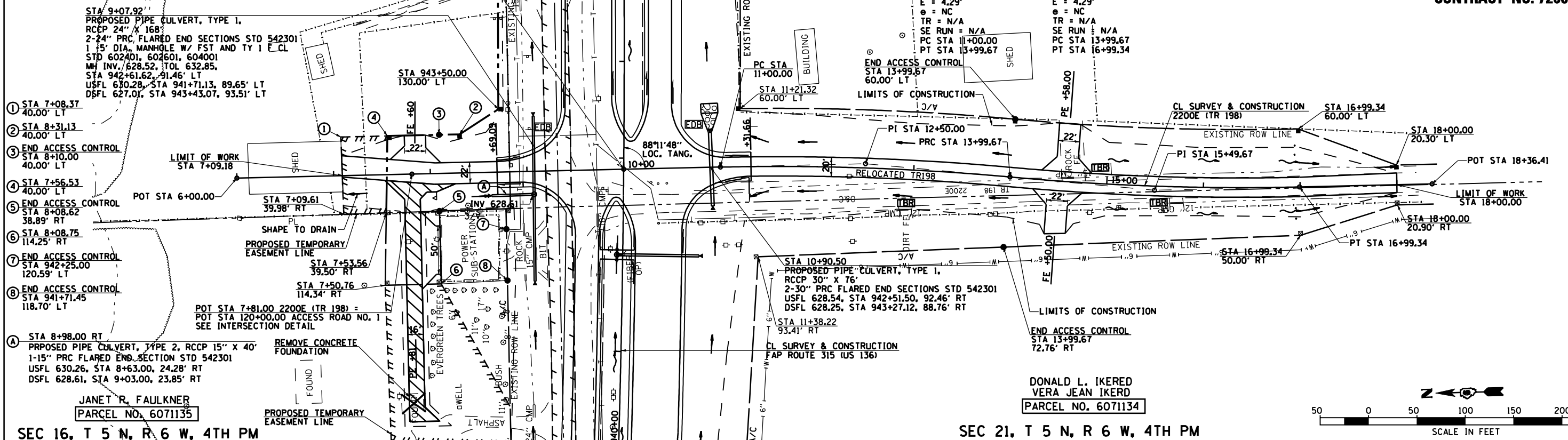
SEC 22, T 5 N, R 6 W, 4TH PM

GARRY L. RICHARDSON & JUNE E. RICHARDSON
PARCEL NO. 6152155

F.A. RTE.	SECTION	COUNTY	TOTAL SHEETS	SHEET NO.
315	34-4	HANCOCK	452	117
STA. 6+00.00 TO STA. 18+36.41		ILLINOIS FED. AID PROJECT		
D-96-991-02				
CONTRACT NO. 72680				

PROP CURVE 30001
PI STA 12+50.00
Δ = 6°33'31" (RT)
D = 291'19"
R = 2,617.94'
T = 150.00'
L = 299.67'
E = 4.29'
e = NC
TR = N/A
SE RUN = N/A
PC STA 11+00.00
PT STA 13+99.67

PROP CURVE 30005
PI STA 15+49.67
Δ = 6°33'31" (LT)
D = 291'19"
R = 2,617.97'
T = 150.00'
L = 299.67'
E = 4.29'
e = NC
TR = N/A
SE RUN = N/A
PC STA 13+99.67
PT STA 16+99.34



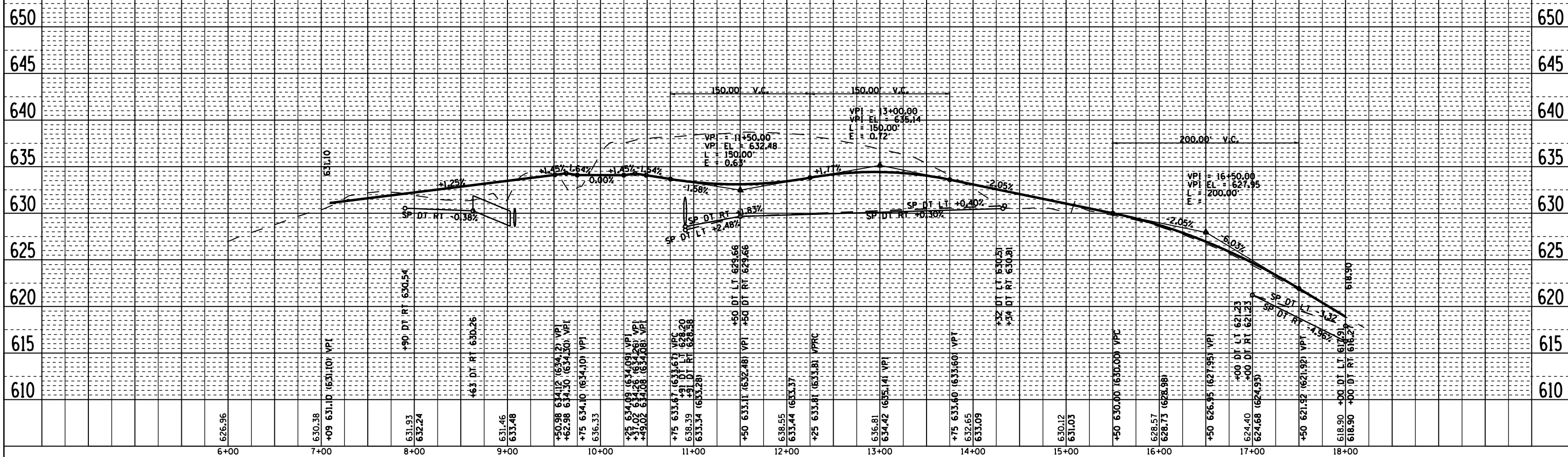
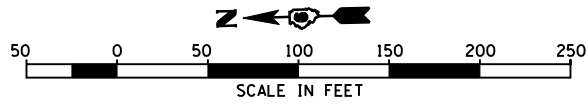
PLAN	SURVEYED	BY	DATE
NO.	NO.		

- ① STA 7+08.37
40.00' LT
- ② STA 8+31.13
40.00' LT
- ③ END ACCESS CONTROL
STA 8+10.00
40.00' LT
- ④ STA 7+56.53
40.00' LT
- ⑤ END ACCESS CONTROL
STA 8+08.62
38.89' RT
- ⑥ STA 8+08.75
114.25' RT
- ⑦ END ACCESS CONTROL
STA 942+25.00
120.59' LT
- ⑧ END ACCESS CONTROL
STA 941+71.45
118.70' LT

⑨ STA 8+98.00 RT
PROPOSED PIPE CULVERT, TYPE 2, RCCP 15" X 40"
1-15" PRC FLARED END SECTION STD 542301
USFL 630.26, STA 8+63.00, 24.28' RT
DSFL 628.61, STA 9+03.00, 23.85' RT

SEC 16, T 5 N, R 6 W, 4TH PM

SEC 21, T 5 N, R 6 W, 4TH PM



PLAN & PROFILE 2200E (TR 198), STA 6+00.00 TO STA 18+36.41