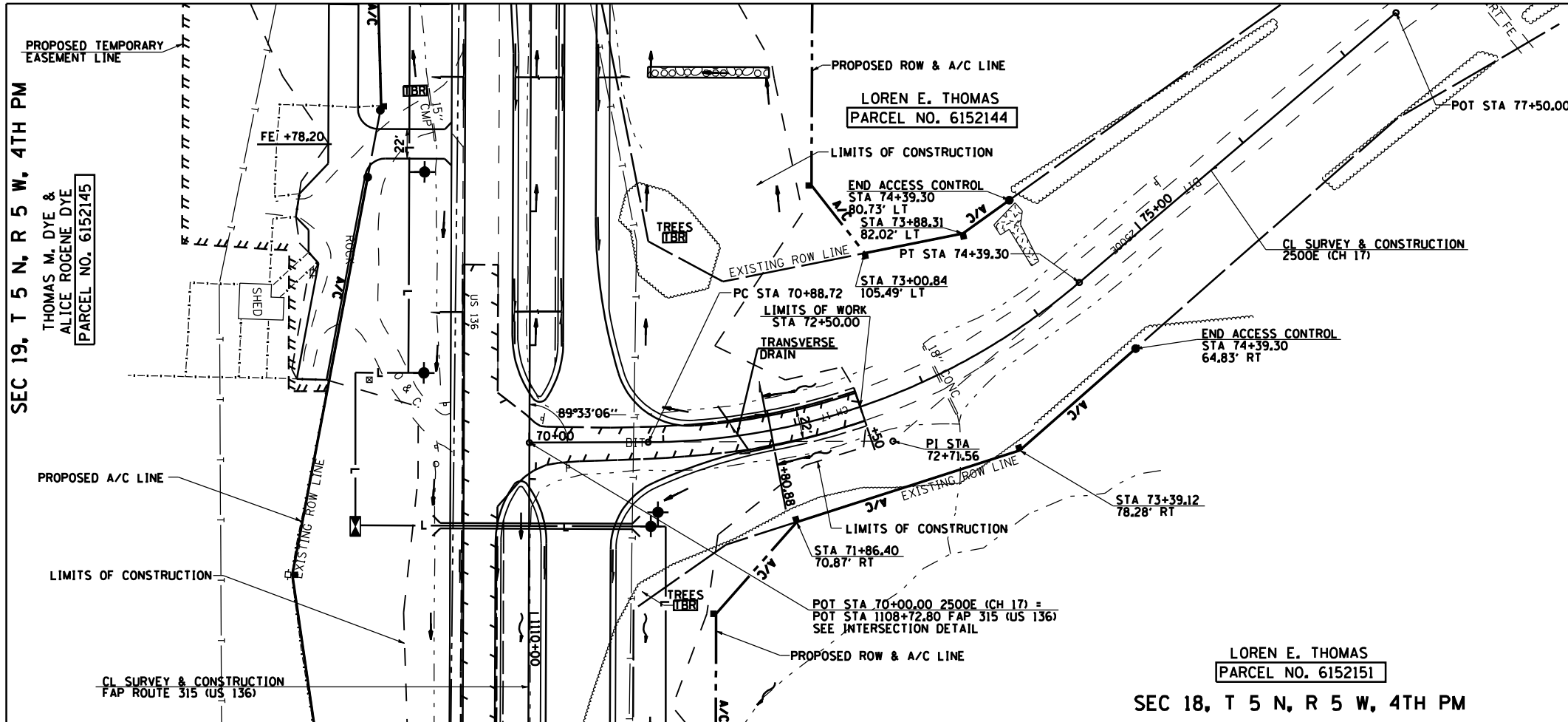


PLAN	SURVEYED	BY	DATE
	PLOTTED		
	NOTED		
	REVISIONS		
	NO.		

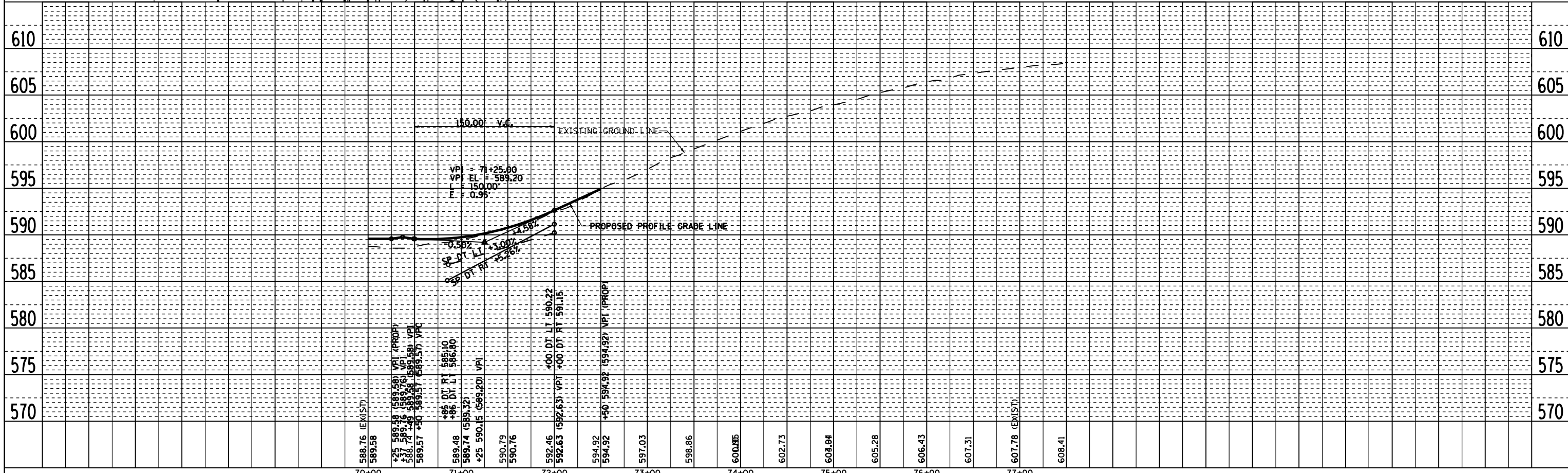
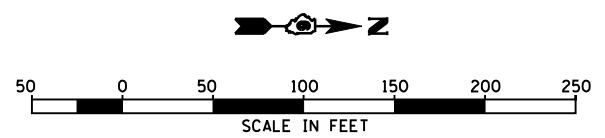
PROFILE	SURVEYED	BY	DATE
	PLOTTED		
	NOTED		
	REVISIONS		
	NO.		



**CURVE CH17**  
 P.I. STA = 72+71.56  
 $\Delta = 40^\circ 10' 26''$  (LT)  
 $D = 11^\circ 27' 33''$   
 $R = 500.00'$   
 $T = 182.85'$   
 $L = 350.58'$   
 $E = 32.38'$   
 P.C. STA = 70+88.72  
 P.T. STA = 74+39.30  
 FOR SE RATE AND SE TRANSITION,  
 SEE INTERSECTION DETAIL

F.A. RTE.	SECTION	COUNTY	TOTAL SHEETS	SHEET NO.
315	34-4	HANCOCK	452	121

CONTRACT NO. 72680



2173PP23

PLAN & PROFILE 2500E (CH 17), STA 70+00.00 TO STA 77+50.00