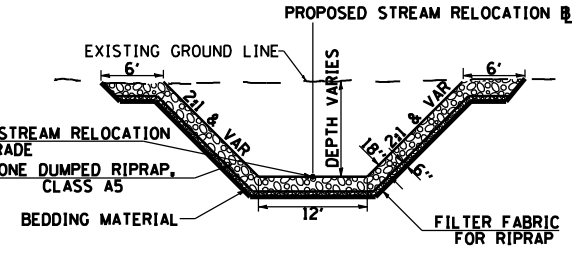


F.A. RTE.	SECTION	COUNTY	TOTAL SHEETS	SHEET NO.
315	34-4	HANCOCK	452	123
STA. 100+00.00 TO STA. 112+51.78				
FED. ROAD DIST. NO.		ILLINOIS	FED. AID PROJECT	

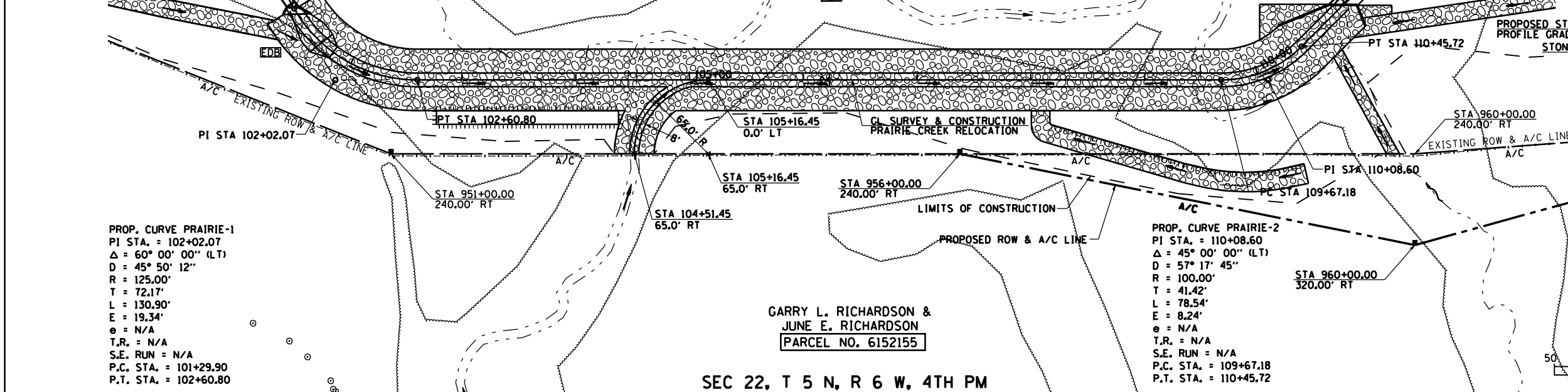
D-96-991-02
CONTRACT NO. 72680

PROPOSED RELOCATED BRUSHY FORK & SANDY CREEK TYPICAL SECTION



PLAN	DATE
SURVEYED	
PLOTTED	
CHECKED	
BY	
NO. OF WAY CHECKED	
CADD FILE NAME	

POT STA 949+50.00
FAP 315 (US 136) =
POT STA 100+00.00
PRAIRIE CREEK
RELOCATION



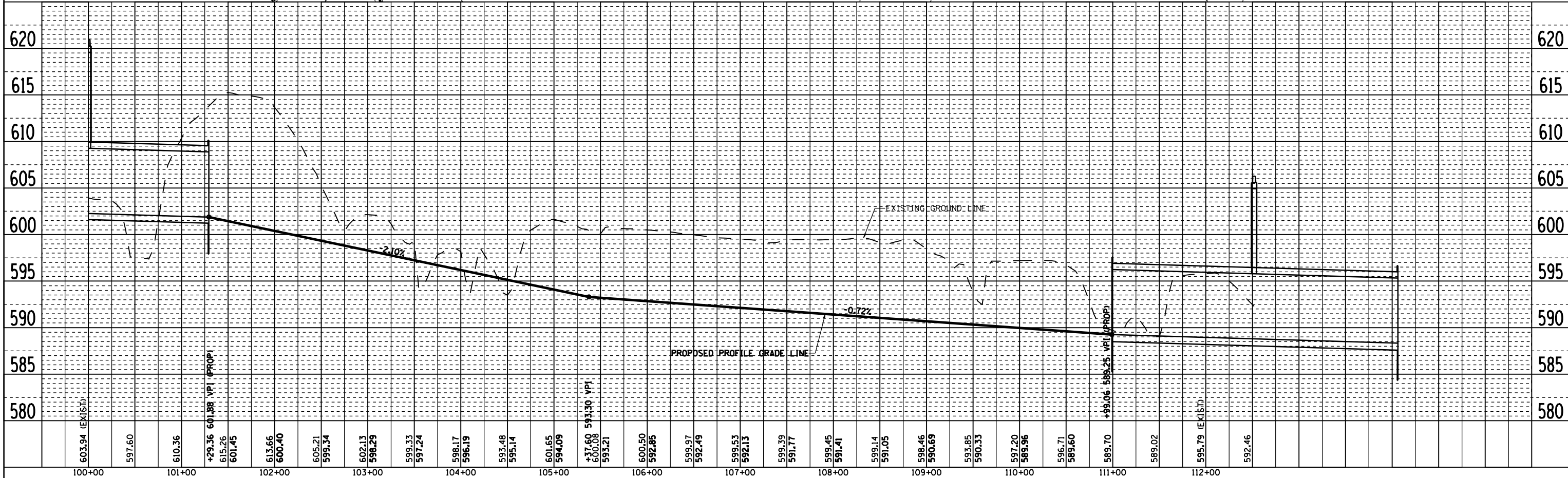
PROP. CURVE PRAIRIE-1
PI STA. = 102+02.07
 $\Delta = 60^\circ 00' 00''$ (LT)
D = 45' 50" 12"
R = 125.00'
T = 72.17'
L = 130.90'
E = 19.34'
e = N/A
T.R. = N/A
S.E. RUN = N/A
P.C. STA. = 101+29.90
P.T. STA. = 102+60.80

GARRY L. RICHARDSON &
JUNE E. RICHARDSON
[PARCEL NO. 6152155]

SEC 22, T 5 N, R 6 W, 4TH PM

PROP. CURVE PRAIRIE-2
PI STA. = 110+08.60
 $\Delta = 45^\circ 00' 00''$ (LT)
D = 57' 17" 45"
R = 100.00'
T = 41.42'
L = 78.54'
E = 8.24'
e = N/A
T.R. = N/A
S.E. RUN = N/A
P.C. STA. = 109+67.18
P.T. STA. = 110+45.72

PROFILE	DATE
SURVEYED	
PLOTTED	
CHECKED	
BY	
NO. OF WAY CHECKED	
STRUCTURE NOTATIONS CHRD	



PLAN & PROFILE RELOCATED PRAIRIE CREEK, STA 100+00.00 TO STA 112+51.78

2173PP24