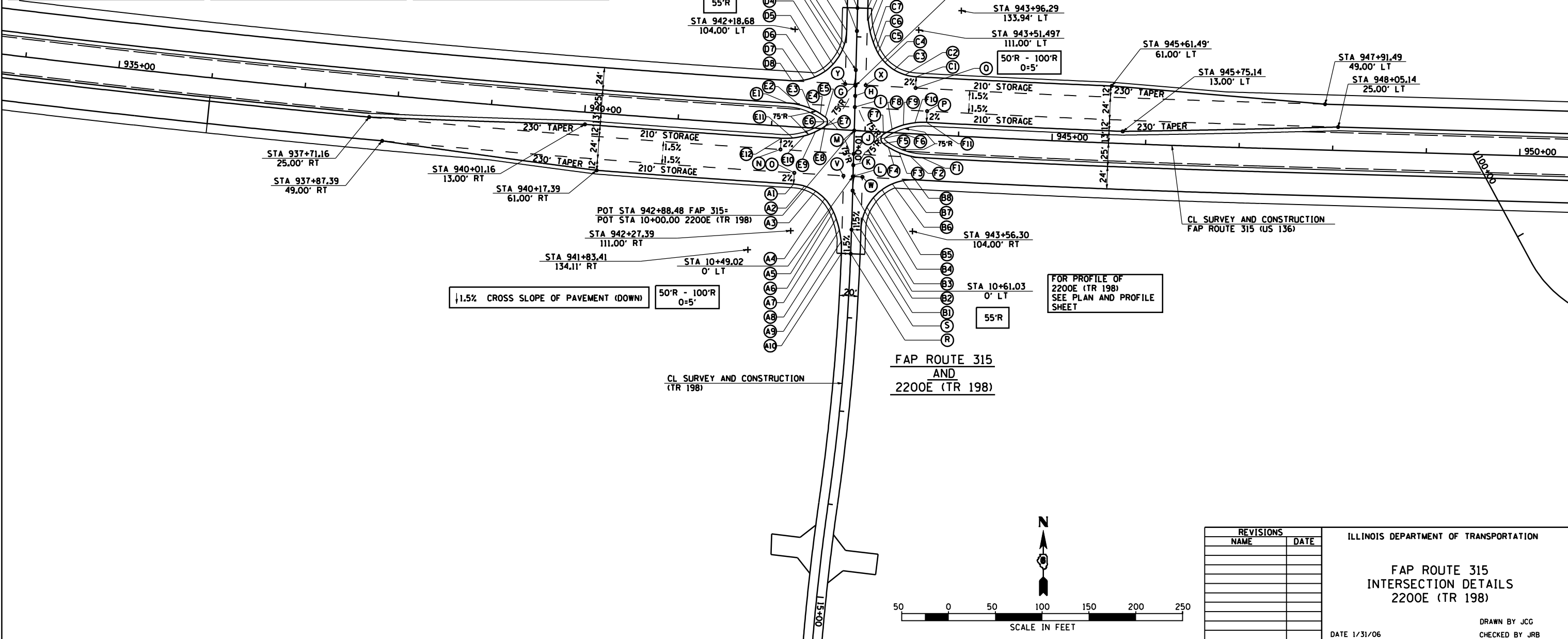


POINT	STATION	OFFSET	ELEVATION	POINT	STATION	OFFSET	ELEVATION	POINT	STATION	OFFSET	ELEVATION	POINT	STATION	OFFSET	ELEVATION
A1	942+27.39	61.00' RT	634.77	C6	943+06.84	87.42' LT	633.05	E11	942+23.60	11.96' RT	634.72	O	943+51.49	49.00 LT	633.15
A2	942+39.23	62.43' RT	634.63	C7	943+03.53	94.85' LT	633.05	E12	942+11.16	13.00' RT	635.04	R	11+31.66	0.00	633.13
A3	942+51.26	67.13' RT	634.38	C8	8+94.10	14.18' LT	633.05	F1	943+62.19	25.00' RT	632.99	S	11+04.44	0.00	633.30
A4	942+61.30	74.45' RT	634.05	C9	8+81.60	11.78' LT	633.03	F2	943+49.76	23.96' RT	633.21	T	8+69.10	0.00	633.10
A5	942+69.37	84.06' RT	633.68	C10	8+69.10	11.00' LT	632.94	F3	943+37.68	20.89' RT	633.44	U	8+95.70	0.00	633.43
A6	942+71.50	88.03' RT	633.58	D1	8+95.71	11.00' RT	633.27	F4	943+25.90	15.66' RT	633.66	V	942+79.86	49.00 RT	634.23
A7	10+94.83	16.69' RT	633.41	D2	942+72.56	91.34' LT	633.45	F5	943+20.07	12.09' RT	633.79	W	942+99.99	49.00 RT	633.93
A8	11+06.53	13.06' RT	633.29	D3	942+68.06	79.17' LT	633.63	F6	943+17.43	7.29' RT	633.79	X	942+97.98	49.00 LT	633.96
A9	11+19.10	10.75' RT	633.04	D4	942+61.59	69.23' LT	633.84	F7	943+19.78	2.35' RT	633.79	Y	942+75.89	49.00 LT	634.29
A10	11+31.66	10.00' RT	632.98	D5	942+53.52	61.28' LT	634.08	F8	943+28.73	3.53' LT	633.54				
B1	11+05.92	10.00' LT	633.15	D6	942+42.93	54.57' LT	634.49	F9	943+40.49	8.82' LT	633.26				
B2	10+93.33	11.46' LT	633.13	D7	942+31.22	50.43' LT	634.87	F10	943+52.69	11.95' LT	632.99				
B3	943+06.66	80.93' RT	633.20	D8	942+18.68	49.00' LT	635.15	F11	943+65.14	13.00' LT	632.71				
B4	943+13.10	70.27' RT	633.24	E1	942+15.26	25.00' LT	635.19	G	942+86.94	49.00 LT	634.12				
B5	943+21.76	61.30' RT	633.25	E2	942+27.73	23.95' LT	634.79	H	942+87.32	37.00 LT	634.29				
B6	943+32.23	54.61' RT	633.23	E3	942+39.84	20.85' LT	634.39	I	942+87.70	25.00 LT	634.11				
B7	943+43.20	50.60' RT	633.19	E4	942+51.30	15.75' LT	634.00	J	942+89.27	25.00 RT	634.09				
B8	943+56.30	49.00' RT	633.08	E5	942+56.18	12.41' LT	633.79	K	942+89.65	37.00 RT	634.27				
C1	943+51.49	61.00' LT	632.91	E6	942+59.47	7.62' LT	633.79	L	942+90.02	49.00 RT	634.08				
C2	943+39.55	62.43' LT	633.00	E7	942+57.63	3.05' LT	633.79	M	942+88.48	0.00	634.10				
C3	943+27.40	67.09' LT	633.03	E8	942+57.14	2.67' LT	633.79	N	942+11.15	25.00 RT	635.28				
C4	943+17.16	74.43' LT	633.04	E9	942+47.15	3.84' RT	634.09	O	942+27.39	49.00 RT	635.01				
C5	943+09.11	84.04' LT	633.05	E10	942+35.69	8.89' RT	634.41	P	943+65.14	25.00 LT	632.95				

NOTE:
ALL MEDIAN NOSE
RADIi ARE 6'

F.A.P. RTE.	SECTION	COUNTY	TOTAL SHEETS	SHEET NO.
315	34-4	HANCOCK	452	125
FED. ROAD DIST. NO.		ILLINOIS	FED. AID PROJECT	
D-98-551-02				
CONTRACT NO. 72680				



REVISIONS	
NAME	DATE

ILLINOIS DEPARTMENT OF TRANSPORTATION

**FAP ROUTE 315
INTERSECTION DETAILS
2200E (TR 198)**

DRAWN BY JCG
CHECKED BY JRB

DATE 1/31/06