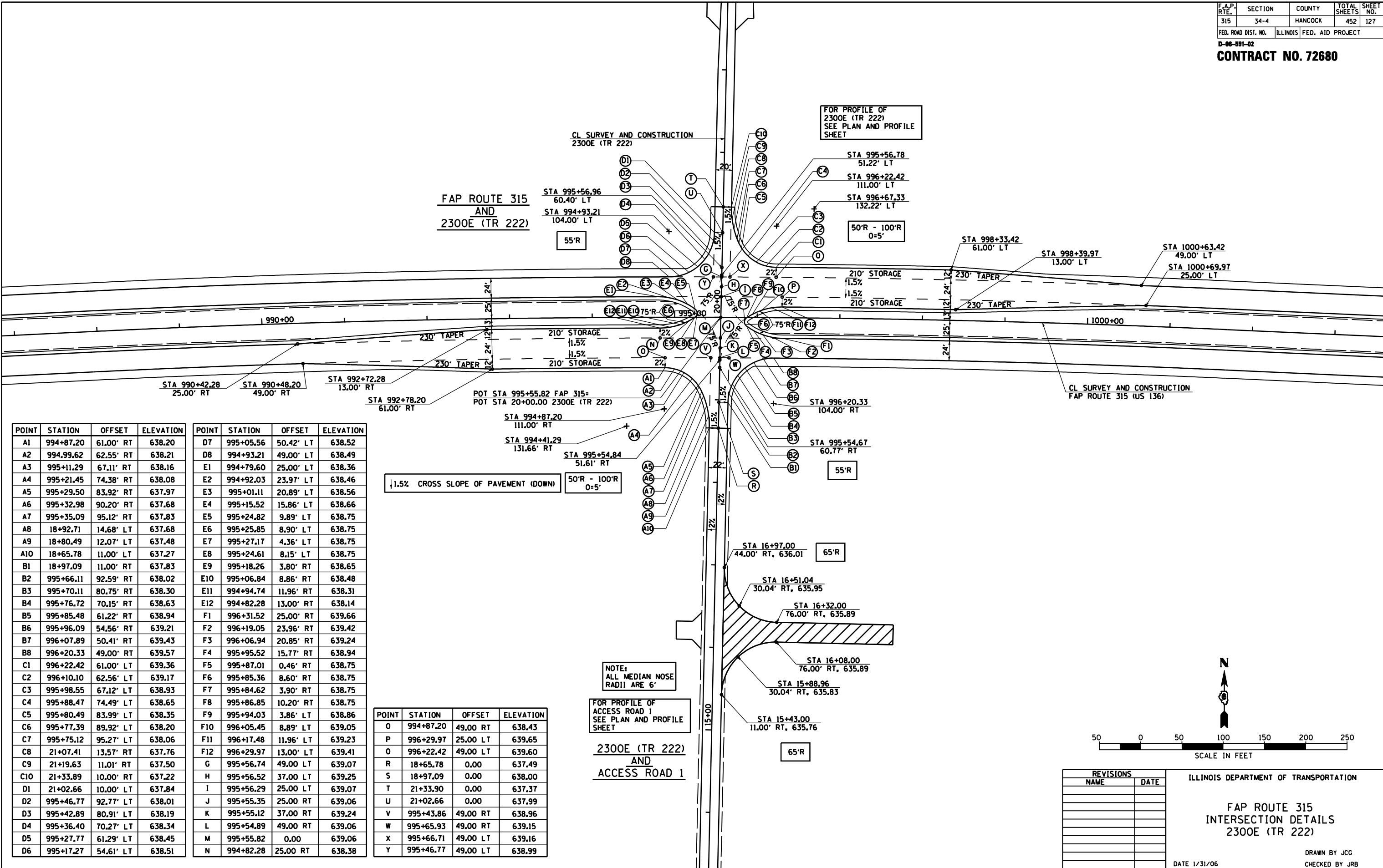


F.A.P. RTE.	SECTION	COUNTY	TOTAL SHEETS	SHEET NO.
315	34-4	HANCOCK	452	127

FED. ROAD DIST. NO. ILLINOIS FED. AID PROJECT
 D-98-591-02
CONTRACT NO. 72680



POINT	STATION	OFFSET	ELEVATION
A1	994+87.20	61.00' RT	638.20
A2	994+99.62	62.55' RT	638.21
A3	995+11.29	67.11' RT	638.16
A4	995+21.45	74.38' RT	638.08
A5	995+29.50	83.92' RT	637.97
A6	995+32.98	90.20' RT	637.68
A7	995+35.09	95.12' RT	637.83
A8	18+92.71	14.68' LT	637.68
A9	18+80.49	12.07' LT	637.48
A10	18+65.78	11.00' LT	637.27
B1	18+97.09	11.00' RT	637.83
B2	995+66.11	92.59' RT	638.02
B3	995+70.11	80.75' RT	638.30
B4	995+76.72	70.15' RT	638.63
B5	995+85.48	61.22' RT	638.94
B6	995+96.09	54.56' RT	639.21
B7	996+07.89	50.41' RT	639.43
B8	996+20.33	49.00' RT	639.57
C1	996+22.42	61.00' LT	639.36
C2	996+10.10	62.56' LT	639.17
C3	995+98.55	67.12' LT	638.93
C4	995+88.47	74.49' LT	638.65
C5	995+80.49	83.99' LT	638.35
C6	995+77.39	89.92' LT	638.20
C7	995+75.12	95.27' LT	638.06
C8	21+07.41	13.57' RT	637.76
C9	21+19.63	11.01' RT	637.50
C10	21+33.89	10.00' RT	637.22
D1	21+02.66	10.00' LT	637.84
D2	995+46.77	92.77' LT	638.01
D3	995+42.89	80.91' LT	638.19
D4	995+36.40	70.27' LT	638.34
D5	995+27.77	61.29' LT	638.45
D6	995+17.27	54.61' LT	638.51

POINT	STATION	OFFSET	ELEVATION
D7	995+05.56	50.42' LT	638.52
D8	994+93.21	49.00' LT	638.49
E1	994+79.60	25.00' LT	638.36
E2	994+92.03	23.97' LT	638.46
E3	995+01.11	20.89' LT	638.56
E4	995+15.52	15.86' LT	638.66
E5	995+24.82	9.89' LT	638.75
E6	995+25.85	8.90' LT	638.75
E7	995+27.17	4.36' LT	638.75
E8	995+24.61	8.15' LT	638.75
E9	995+18.26	3.80' RT	638.65
E10	995+06.84	8.86' RT	638.48
E11	994+94.74	11.96' RT	638.31
E12	994+82.28	13.00' RT	638.14
F1	996+31.52	25.00' RT	639.66
F2	996+19.05	23.96' RT	639.42
F3	996+06.94	20.85' RT	639.24
F4	995+95.52	15.77' RT	638.94
F5	995+87.01	0.46' RT	638.75
F6	995+85.36	8.60' RT	638.75
F7	995+84.62	3.90' RT	638.75
F8	995+86.85	10.20' RT	638.75
F9	995+94.03	3.86' LT	638.86
F10	996+05.45	8.89' LT	639.05
F11	996+17.48	11.96' LT	639.23
F12	996+29.97	13.00' LT	639.41
G	995+56.74	49.00' LT	639.07
H	995+56.52	37.00' LT	639.25
I	995+56.29	25.00' LT	639.07
J	995+55.35	25.00' RT	639.06
K	995+55.12	37.00' RT	639.24
L	995+54.89	49.00' RT	639.06
M	995+55.82	0.00	639.06
N	994+82.28	25.00' RT	638.38

POINT	STATION	OFFSET	ELEVATION
O	994+87.20	49.00' RT	638.43
P	996+29.97	25.00' LT	639.65
Q	996+22.42	49.00' LT	639.60
R	18+65.78	0.00	637.49
S	18+97.09	0.00	638.00
T	21+33.90	0.00	637.37
U	21+02.66	0.00	637.99
V	995+43.86	49.00' RT	638.96
W	995+65.93	49.00' RT	639.15
X	995+66.71	49.00' LT	639.16
Y	995+46.77	49.00' LT	638.99

NOTE:
ALL MEDIAN NOSE RADII ARE 6'

FOR PROFILE OF ACCESS ROAD 1
SEE PLAN AND PROFILE SHEET

2300E (TR 222)
AND
ACCESS ROAD 1

REVISIONS	
NAME	DATE

ILLINOIS DEPARTMENT OF TRANSPORTATION
 FAP ROUTE 315
 INTERSECTION DETAILS
 2300E (TR 222)
 DATE 1/31/06
 DRAWN BY JCG
 CHECKED BY JRB