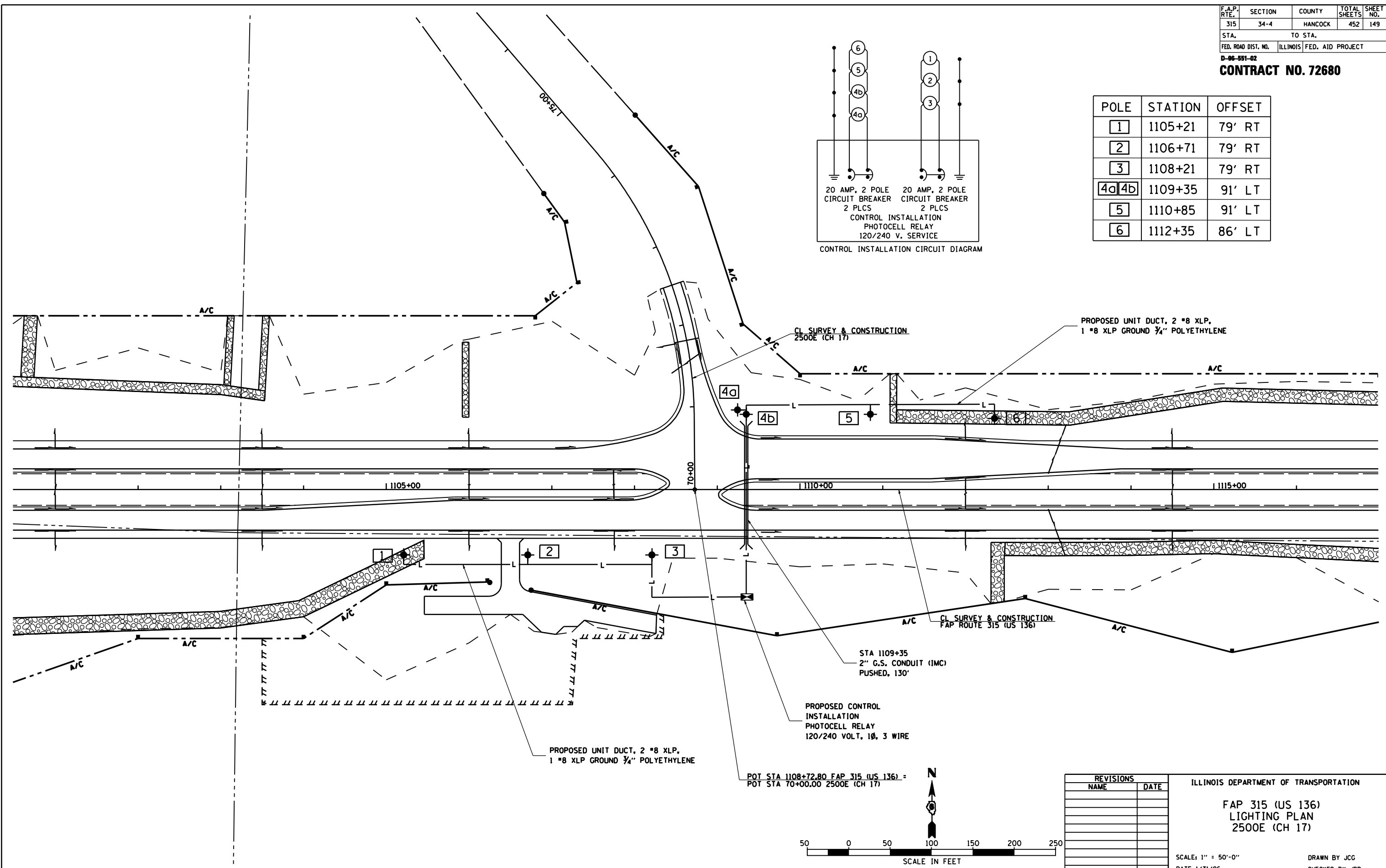
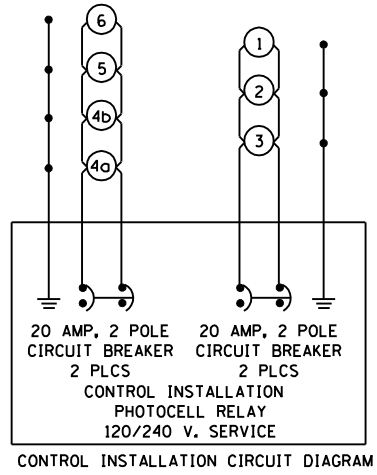


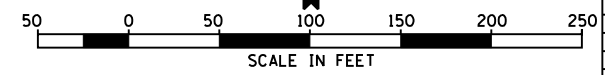
F.A.P. RTE.	SECTION	COUNTY	TOTAL SHEETS	SHEET NO.
315	34-4	HANCOCK	452	149
STA. 315		TO STA. 315		
FED. ROAD DIST. NO.	ILLINOIS	FED. AID PROJECT		

CONTRACT NO. 72680

POLE	STATION	OFFSET
1	1105+21	79' RT
2	1106+71	79' RT
3	1108+21	79' RT
4a/4b	1109+35	91' LT
5	1110+85	91' LT
6	1112+35	86' LT



POT STA 1108+72.80 FAP 315 (US 136) = POT STA 70+00.00 2500E (CH 17)



REVISIONS	
NAME	DATE

ILLINOIS DEPARTMENT OF TRANSPORTATION
 FAP 315 (US 136)
 LIGHTING PLAN
 2500E (CH 17)
 SCALE: 1" = 50'-0"
 DATE 1/31/06
 DRAWN BY JCG
 CHECKED BY JRB