

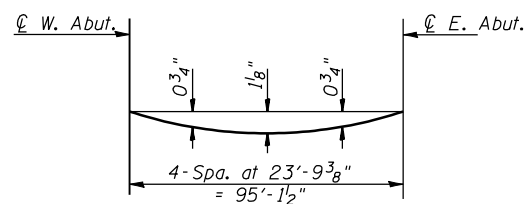
| | | | | |
|-----------------------|----------|---------|--------------|-----------|
| ROUTE NO. | SEC | COUNTY | TOTAL SHEETS | SHEET NO. |
| FAP 315 | * | HANCOCK | 452 | 182 |
| FED. ROAD DIST. NO. 7 | ILLINOIS | PROJECT | | |

SHEET NO. 5
21 SHEETS

* 34-4B

D-96-551-02

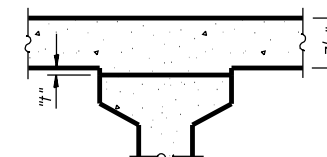
CONTRACT NO. 72680



DEAD LOAD DEFLECTION DIAGRAM

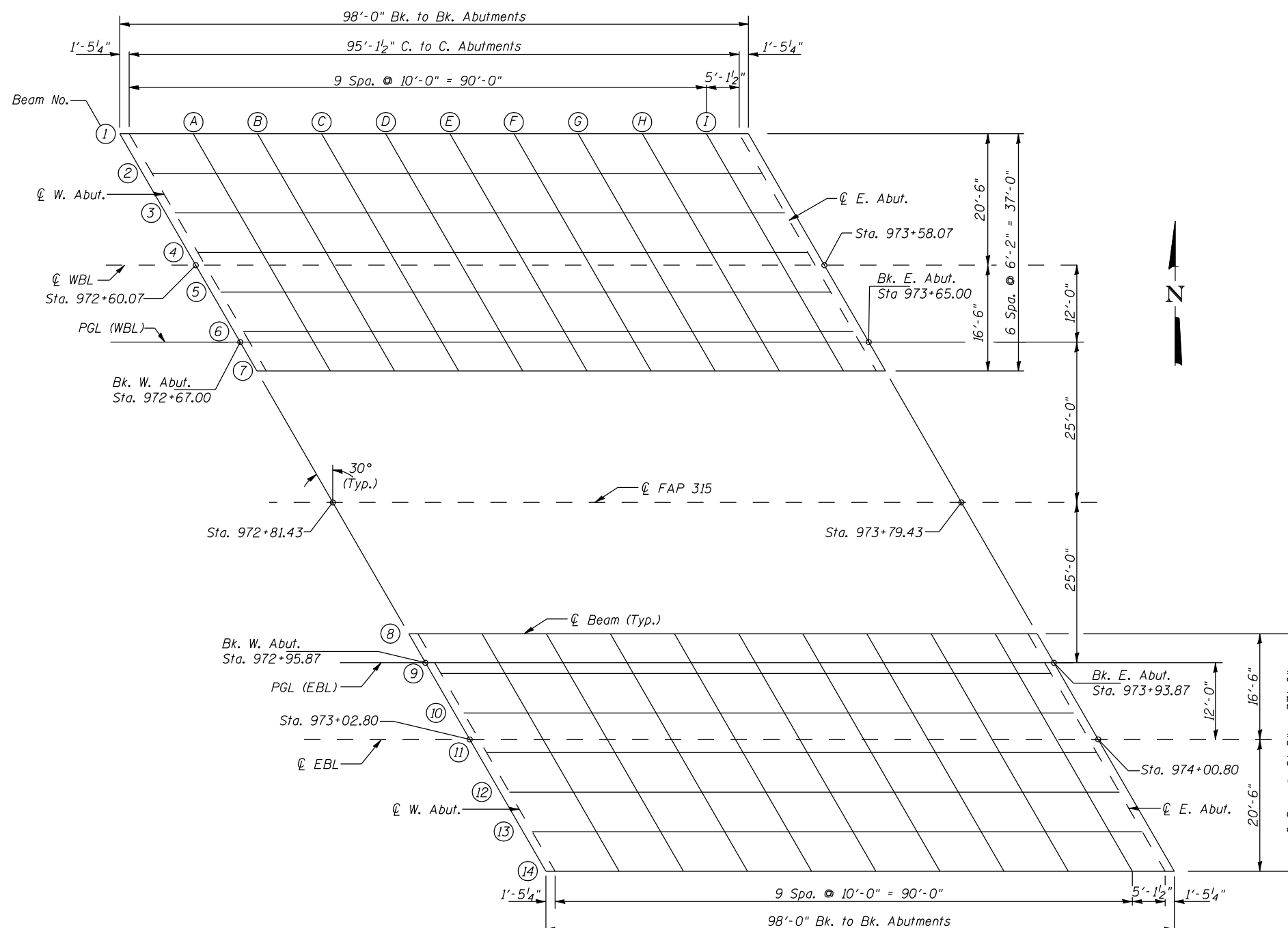
(Includes weight of concrete deck & superimposed DL except future wearing surface)

Note: The above deflections are not to be used in the field if the engineer is working from the grade elevations adjusted for dead load deflections as shown on sheet #'s 6 and 7 of 21.



To determine "h": After all precast prestressed beams have been erected, elevations of the top flanges of the beams shall be taken at intervals shown on this sheet. These elevations subtracted from the "Theoretical Grade Elevations Adjusted for Dead Load Deflections" minus slab thickness, equals the fillet heights "h" above top flanges of beams.

FILLET HEIGHTS



PLAN

TOP OF SLAB ELEVATIONS
FAP ROUTE 315 OVER PRAIRIE CREEK
SECTION 34-4B
HANCOCK COUNTY
STATION 973+28.00
STR. NO. 034-0506 (WBL)
STR. NO. 034-0507 (EBL)

HUTCHISON ENGINEERING, INC.
 JACKSONVILLE, ILLINOIS

Date: January 31, 2006