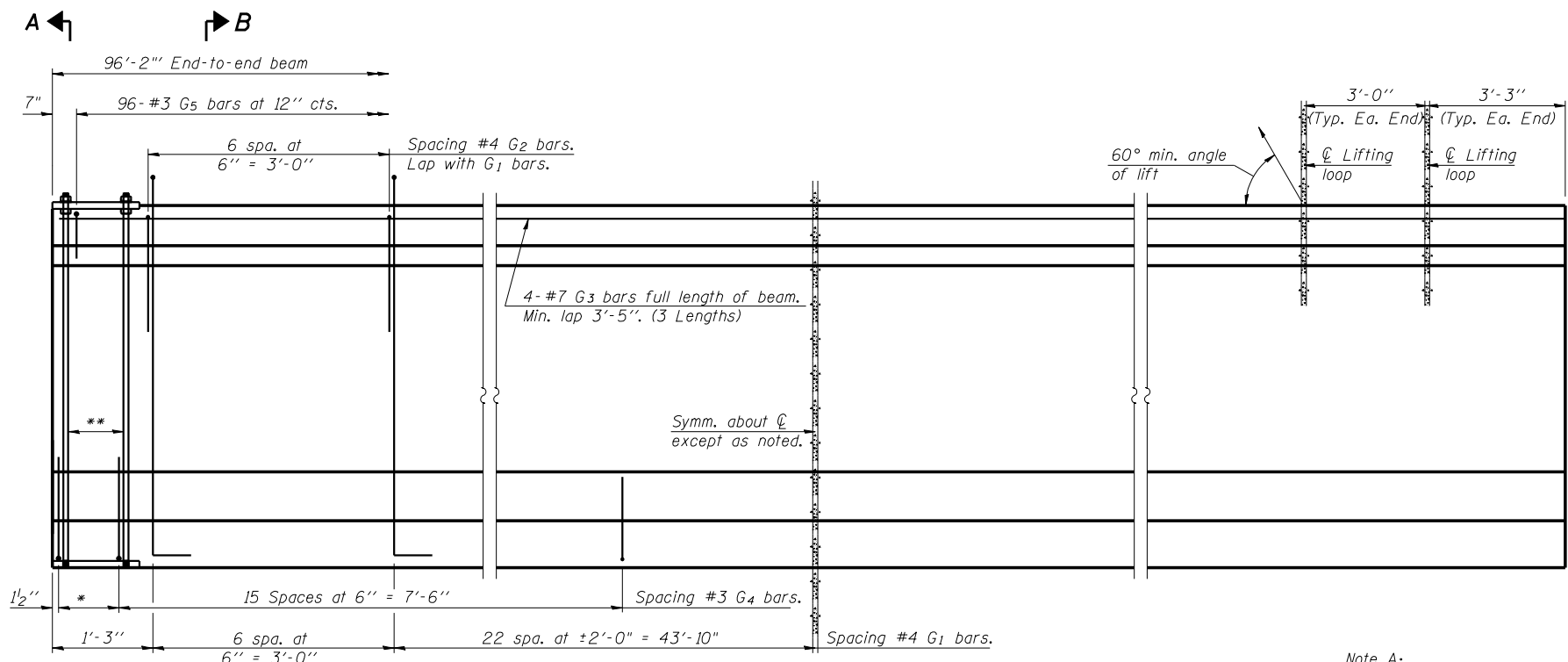


ROUTE NO.	SEC	COUNTY	TOTAL SHEETS	SHEET NO.
FAP 315	*	HANCOCK	452	187
FED. ROAD DIST. NO. 7	ILLINOIS		PROJECT	

SHEET NO. 10
21 SHEETS

* 34-4B

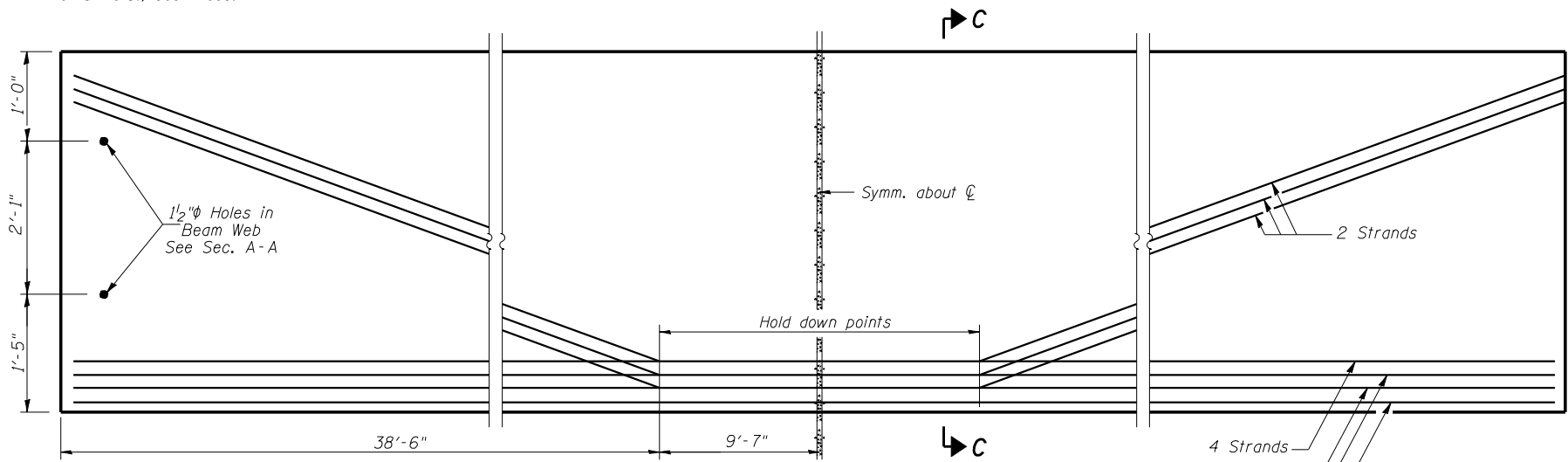
D-96-551-02
CONTRACT NO. 72680



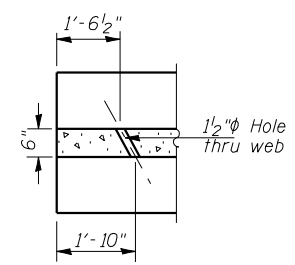
ELEVATION OF BEAM
(Showing reinforcement & dimensions)

Note A:
Hex nuts (top and bottom) with lock washers (top). Only tighten sufficiently to compress lock washers.

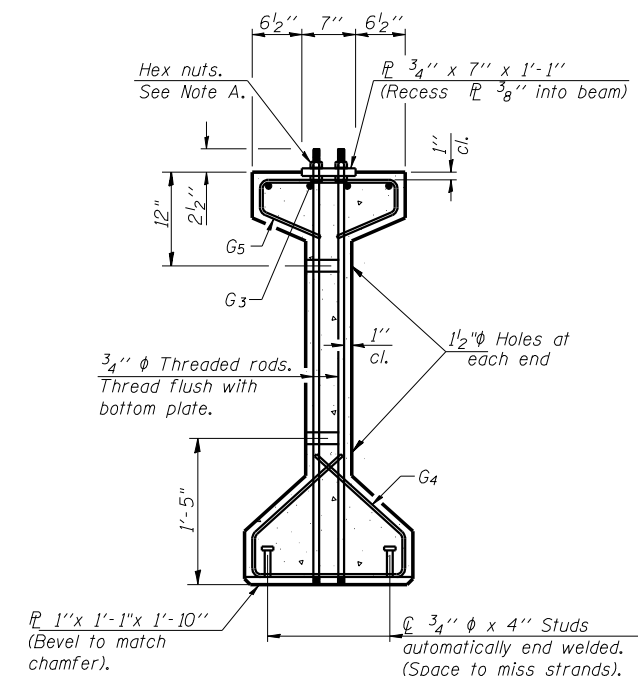
* 3 spaces at 3" = 9".
** 4-3/4" diameter threaded dowel rods at 3" centers, each face.



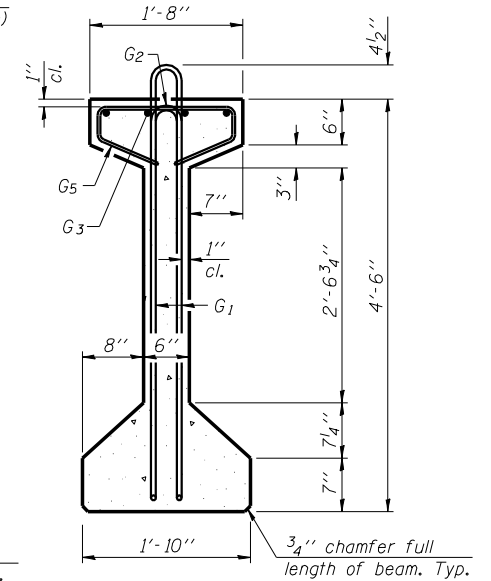
ELEVATION OF BEAM
(Showing prestressing steel)



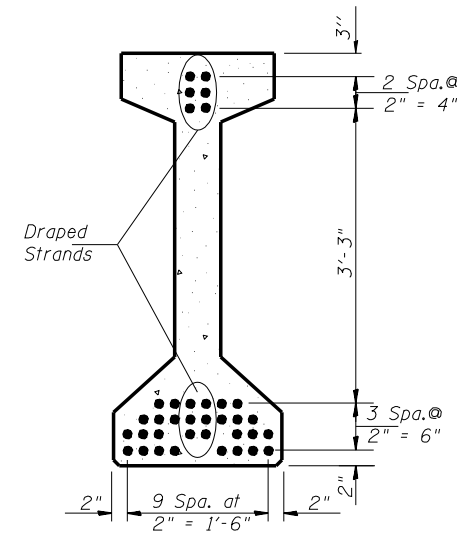
END OF BEAM
For other end of beam rotate 180°



SECTION A-A



SECTION B-B



SECTION C-C

BAR LIST
ONE BEAM ONLY

Bar	No.	Size	Length	Shape
G ₁	57	#4	10'-5"	⊏
G ₂	14	#4	5'-4"	⊏
G ₃	12	#7	34'-3"	⊏
G ₄	38	#3	4'-11"	⊏
G ₅	96	#3	3'-5"	⊏

Notes:
See sheet 10A of 21 for additional details and Bill of Material.
Required release strength, f'ci, shall be 5000 psi.

54" PPC I-BEAM
FAP ROUTE 315 OVER PRAIRIE CREEK
SECTION 34-4B
HANCOCK COUNTY
STATION 973+28.00
STR. NO. 034-0506 (WBL)
STR. NO. 034-0507 (EBL)
HUTCHISON ENGINEERING, INC.
JACKSONVILLE, ILLINOIS
Date: March 24, 2006