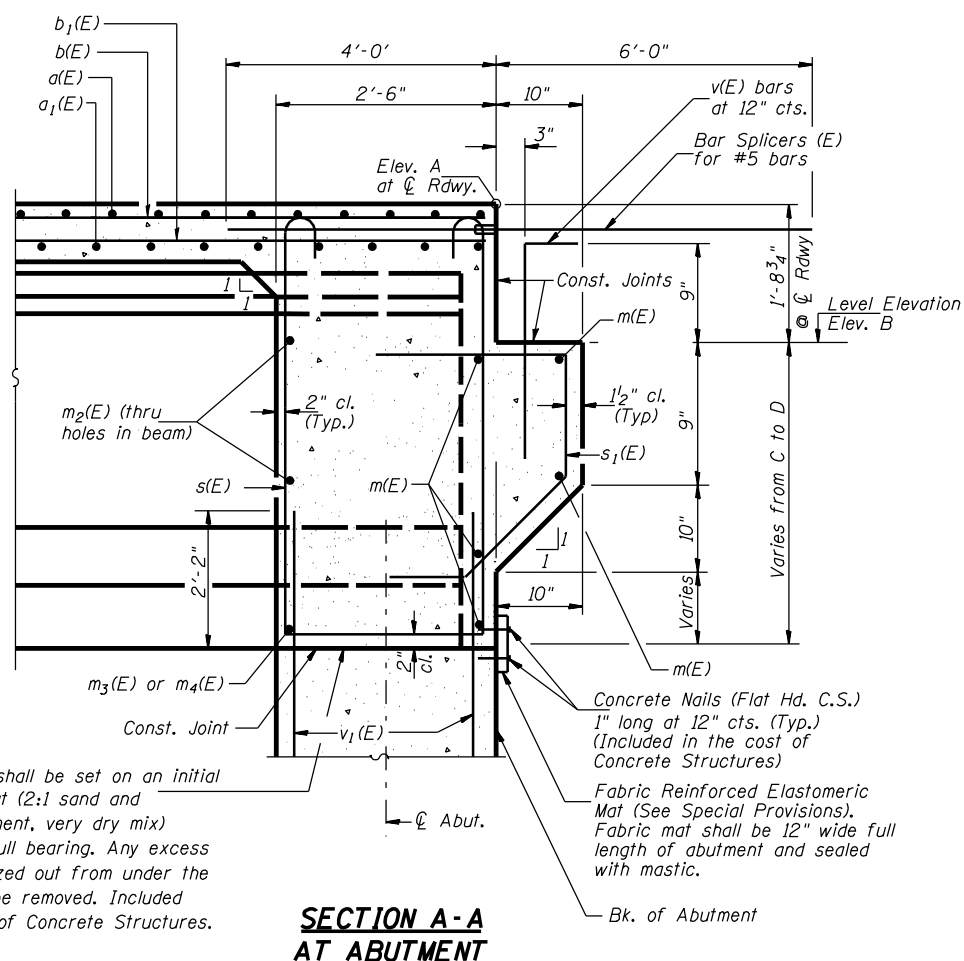


CONTRACT NO. 72680



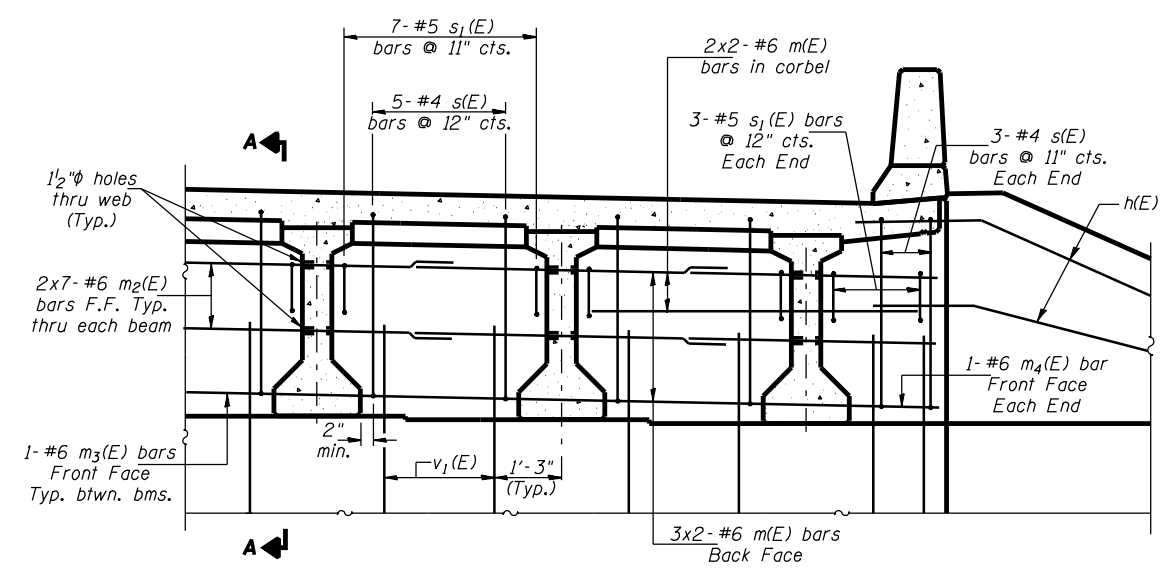
Beam ends shall be set on an initial 1/2" Min. grout (2:1 sand and portland cement, very dry mix) to provide full bearing. Any excess grout squeezed out from under the beam shall be removed. Included in the cost of Concrete Structures.

**SECTION A-A
AT ABUTMENT**

**ABUTMENT TABLE OF
ELEVATIONS & DIMENSIONS**

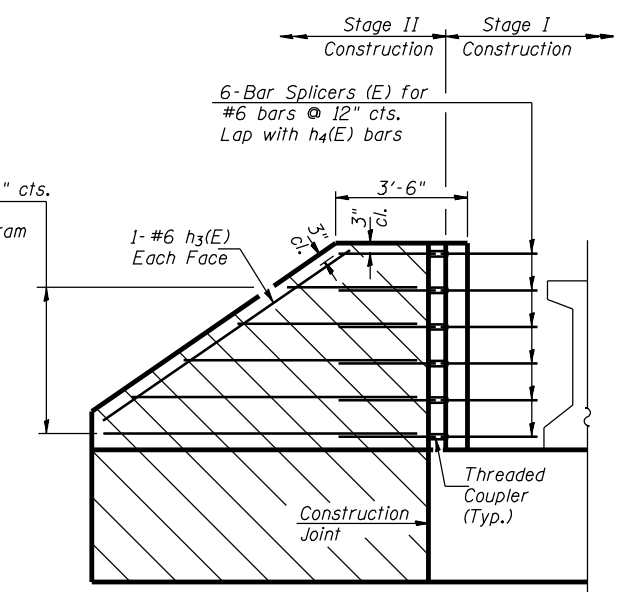
	WBL STRUCTURE		EBL STRUCTURE	
	W. Abut.	E. Abut.	W. Abut.	E. Abut.
ELEV. A	606.35	607.46	606.79	608.07
ELEV. B	604.62	605.73	605.06	606.34
C	3'-9"	3'-9 1/2"	3'-8 3/4"	3'-9 1/2"
D	4'-2 1/4"	4'-3 1/8"	4'-1 1/4"	4'-2"

Min. Lap
#6 bar - 2'-7"

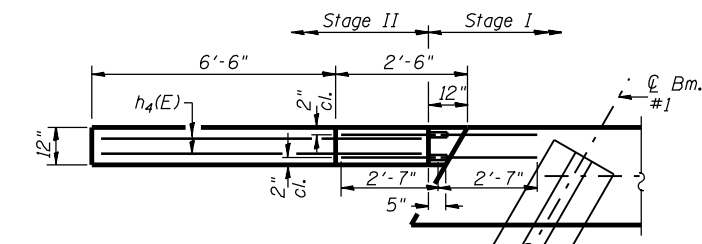


DIAPHRAGM AT ABUTMENTS

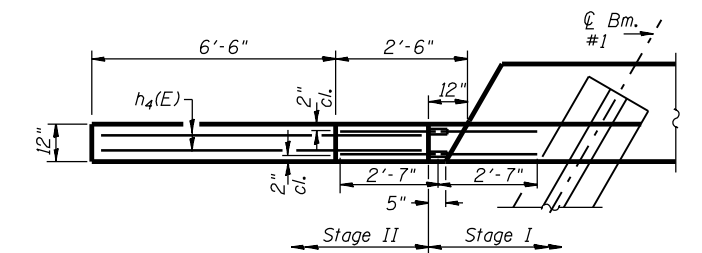
Notes:
Reinforcement bars in diaphragm are billed with superstructure on sheet 9 of 21.
Concrete in diaphragm is included with Concrete Superstructure on sheet 9 of 21.
For details of bars s(E) & s1(E) see sheet 9 of 21.
The s(E) and s1(E) bars shall be placed parallel to the beams. Spacing for these bars shall be at right angles to the beams.
Bars indicated thus 20x3-#5 etc. indicates 20 lines of bars with 3 lengths per line.



**ELEVATION NORTH WINGWALLS
(W.B.L.)**



**PLAN NORTH WINGWALL
EAST ABUTMENT (W.B.L.)**



**PLAN NORTH WINGWALL
WEST ABUTMENT (W.B.L.)**

DIAPHRAGM DETAILS
FAP ROUTE 315 OVER PRAIRIE CREEK
SECTION 34-4B
HANCOCK COUNTY
STATION 973+28.00
STR. NO. 034-0506 (WBL)
STR. NO. 034-0507 (EBL)
HUTCHISON ENGINEERING, INC.
JACKSONVILLE, ILLINOIS
Date: January 31, 2006