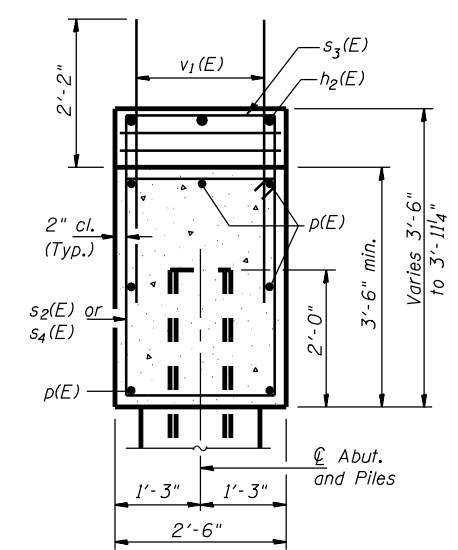
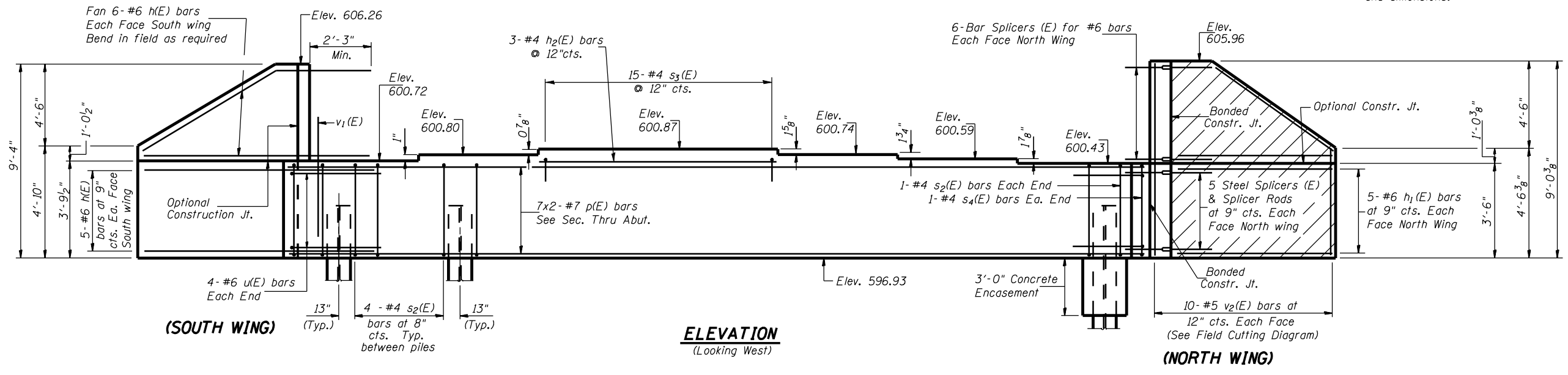


**CONTRACT NO. 72680**

Notes:  
Pour steps monolithically with cap.

Hatched area indicates portion of wing to be constructed during Stage II (after removal of existing structure)

North wing to be constructed after removal of exist. structure. See Sh.#12 of 21 for Reinforcement and dimensions.



**PILE DATA**

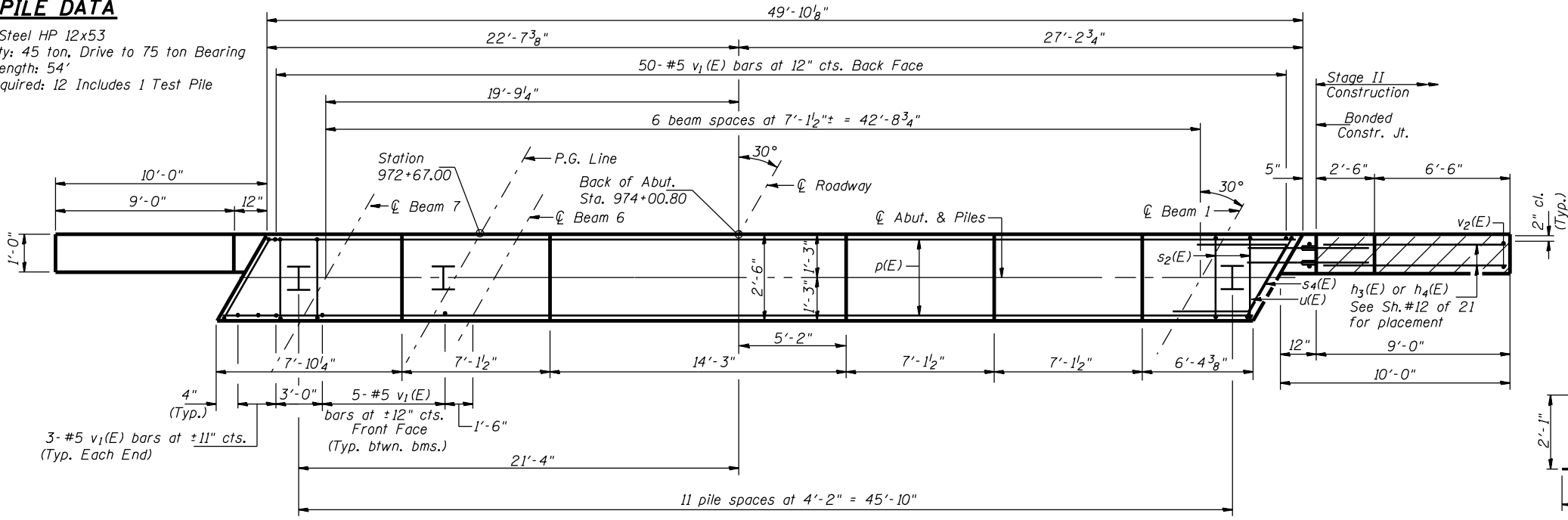
Type: Steel HP 12x53  
Capacity: 45 ton, Drive to 75 ton Bearing Est. Length: 54'  
No. Required: 12 Includes 1 Test Pile

**MIN. BAR LAP**  
#7 bar = 3'-5"

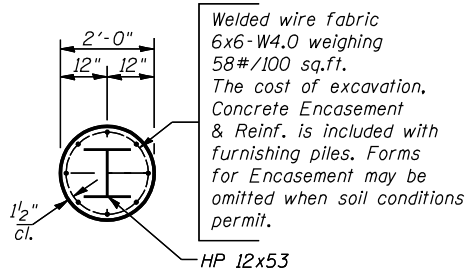
**SEC. THRU ABUT.**

**BILL OF MATERIAL**

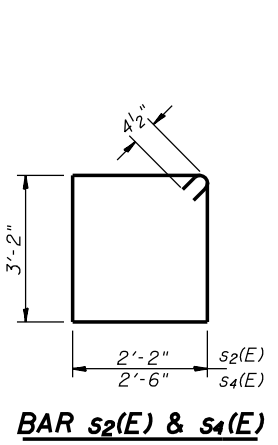
Bar	No.	Size	Length	Shape
h(E)	22	#6	12'-0"	—
h <sub>1</sub> (E)	10	#6	8'-8"	—
h <sub>2</sub> (E)	3	#4	14'-0"	—
h <sub>3</sub> (E)	2	#6	8'-6"	—
h <sub>4</sub> (E)	5	#6	12'-0"	—
p(E)	14	#7	26'-6"	—
s <sub>2</sub> (E)	46	#4	11'-5"	□
s <sub>3</sub> (E)	15	#4	5'-6"	□
s <sub>4</sub> (E)	2	#4	12'-1"	□
u(E)	8	#6	10'-5"	—
v <sub>1</sub> (E)	86	#5	4'-4"	—
v <sub>2</sub> (E)	20	#5	13'-0"	—
Concrete Structures	CU YD	22.5		
Reinforcement Bars, Epoxy Coated	POUND	2,640		
Bar Splicers	EACH	22		
Structure Excavation	CU YD	140		
Furnishing Steel Piles HP12x53	FOOT	594		
Driving Steel Piles HP12x53	FOOT	594		
Test Pile Steel HP12x53	EACH	1		



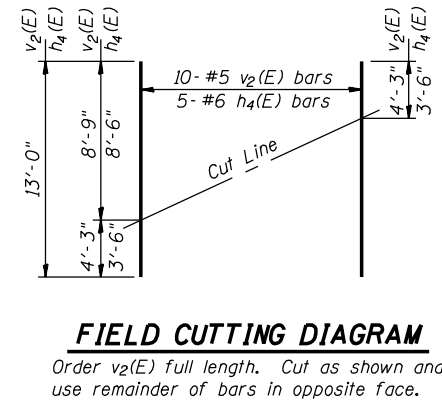
**BAR u(E)**



**PILE ENCASEMENT DETAIL**



**BARS s<sub>3</sub>(E)**



Reinforcement bars designated (E) shall be epoxy coated.  
Bars indicated thus 20x3-#5 etc. indicates 20 lines of bars with 3 lengths per line.

**WEST ABUTMENT (W.B.L.)**  
**FAP ROUTE 315 OVER PRAIRIE CREEK**  
**SECTION 34-4B**  
**HANCOCK COUNTY**  
**STATION 973+28.00**  
**STR. NO. 034-0506 (WBL)**  
**STR. NO. 034-0507 (EBL)**  
**HUTCHISON ENGINEERING, INC.**  
**JACKSONVILLE, ILLINOIS**  
Date: January 31, 2006