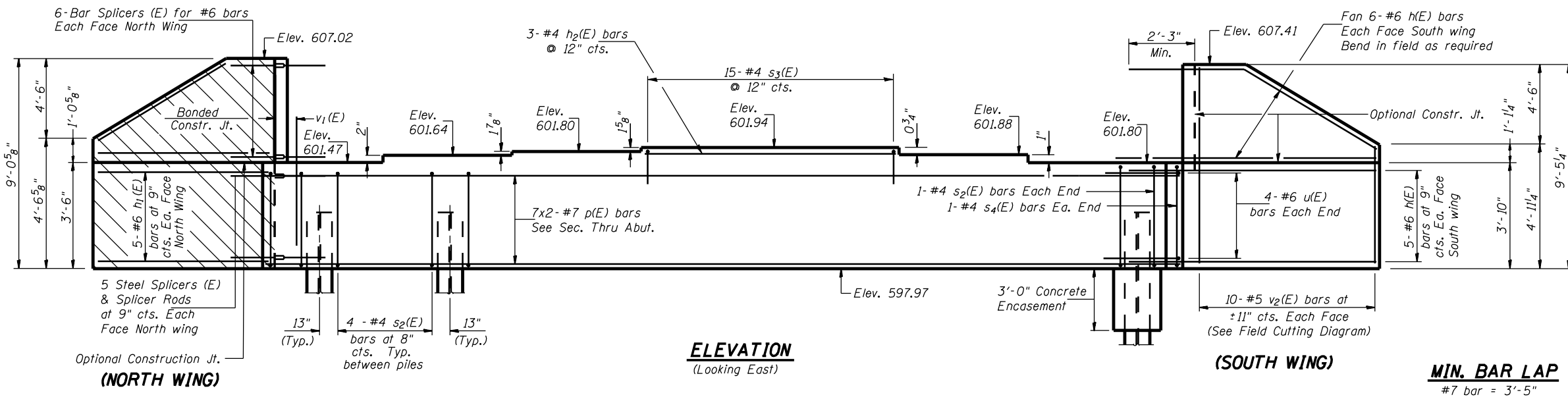


Notes:
Pour steps monolithically with cap.

North wing to be constructed after removal of exist. structure. See Sh.#12 of 21 for Reinforcement and dimensions.

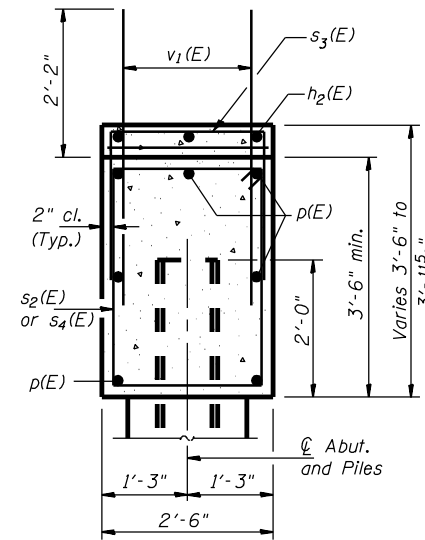
Hatched area indicates portion of wing to be constructed during Stage II (after removal of existing structure)



ELEVATION
(Looking East)

(SOUTH WING)

MIN. BAR LAP
#7 bar = 3'-5"



SEC. THRU ABUT.

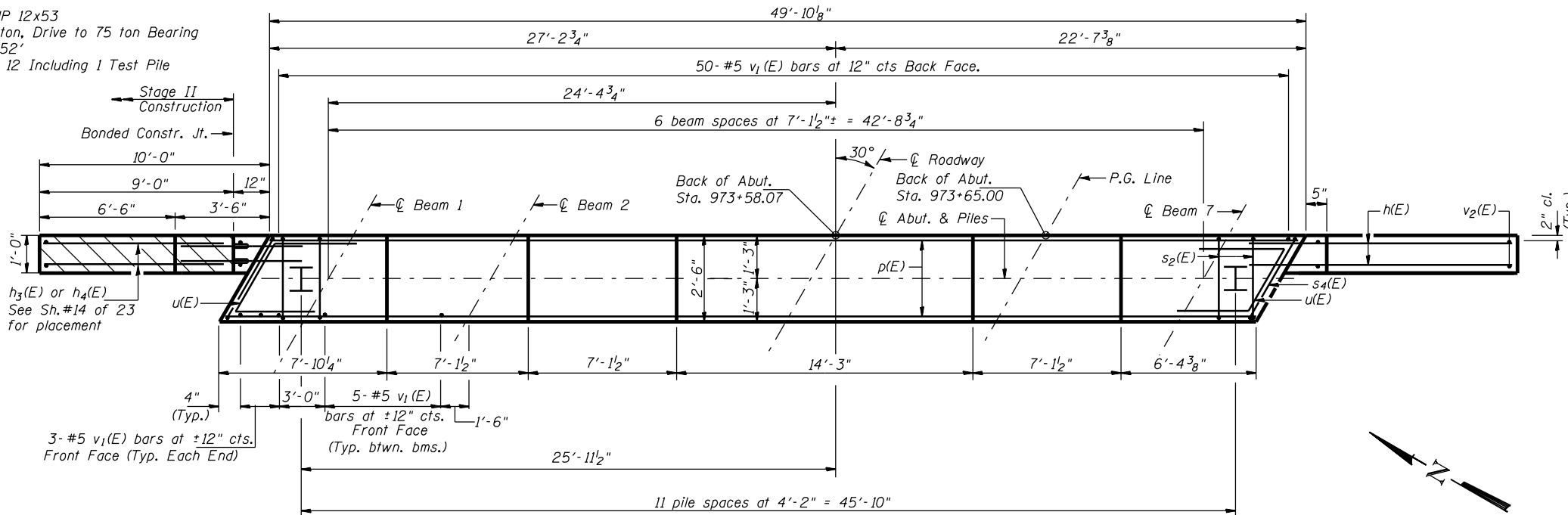
BILL OF MATERIAL

Bar	No.	Size	Length	Shape
h1(E)	22	#6	12'-0"	
h2(E)	3	#4	14'-0"	
h3(E)	2	#6	8'-6"	
h4(E)	5	#6	12'-0"	
p(E)	14	#7	26'-6"	
s2(E)	46	#4	11'-5"	□
s3(E)	15	#4	5'-6"	□
s4(E)	2	#4	12'-1"	□
u(E)	8	#6	10'-5"	▭
v1(E)	86	#5	4'-4"	
v2(E)	20	#5	13'-0"	
Concrete Structures	CU YD	22.9		
Reinforcement Bars, Epoxy Coated	POUND	2,640		
Bar Splicers	EACH	22		
Structure Excavation	CU YD	140		
Furnishing Steel Piles HP12x53	FOOT	572		
Driving Steel Piles HP12x53	FOOT	572		
Test Pile Steel HP12x53	EACH	1		

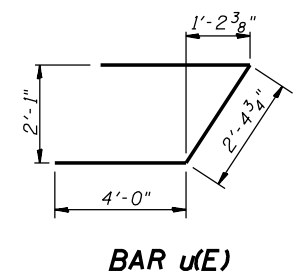
Reinforcement bars designated (E) shall be epoxy coated.
Bars indicated thus 20x3-#5 etc. indicates 20 lines of bars with 3 lengths per line.

PILE DATA

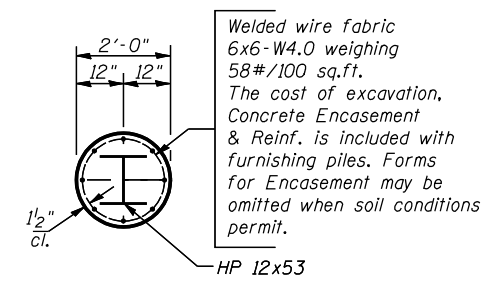
Type: Steel HP 12x53
Capacity: 45 ton, Drive to 75 ton Bearing
Est. Length: 52'
No. Required: 12 Including 1 Test Pile



PLAN

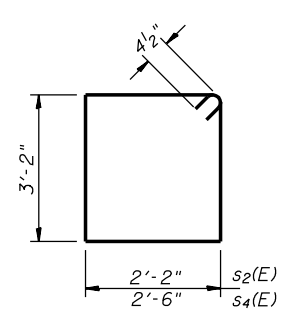
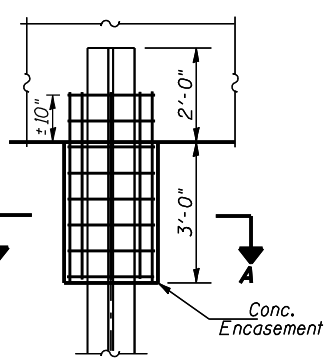


BAR u(E)

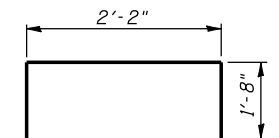


SECTION A-A

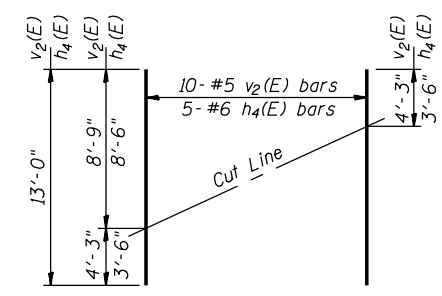
PILE ENCASEMENT DETAIL



BAR s2(E) & s4(E)



BARS s3(E)



FIELD CUTTING DIAGRAM

Order v2(E) full length. Cut as shown and use remainder of bars in opposite face.

EAST ABUTMENT (W.B.L.)
FAP ROUTE 315 OVER PRAIRIE CREEK
SECTION 34-4B
HANCOCK COUNTY
STATION 973+28.00
STR. NO. 034-0506 (WBL)
STR. NO. 034-0507 (EBL)

HUTCHISON ENGINEERING, INC.
JACKSONVILLE, ILLINOIS

Date: January 31, 2006