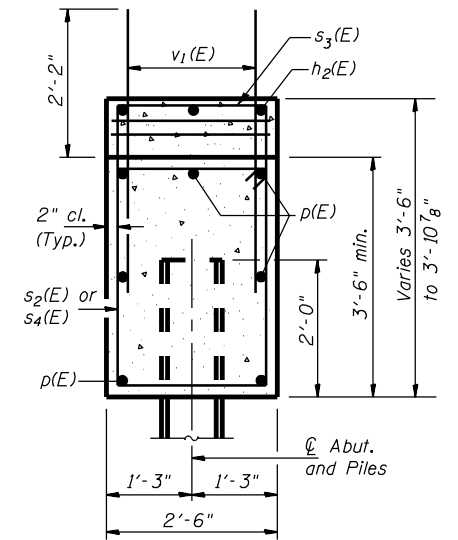
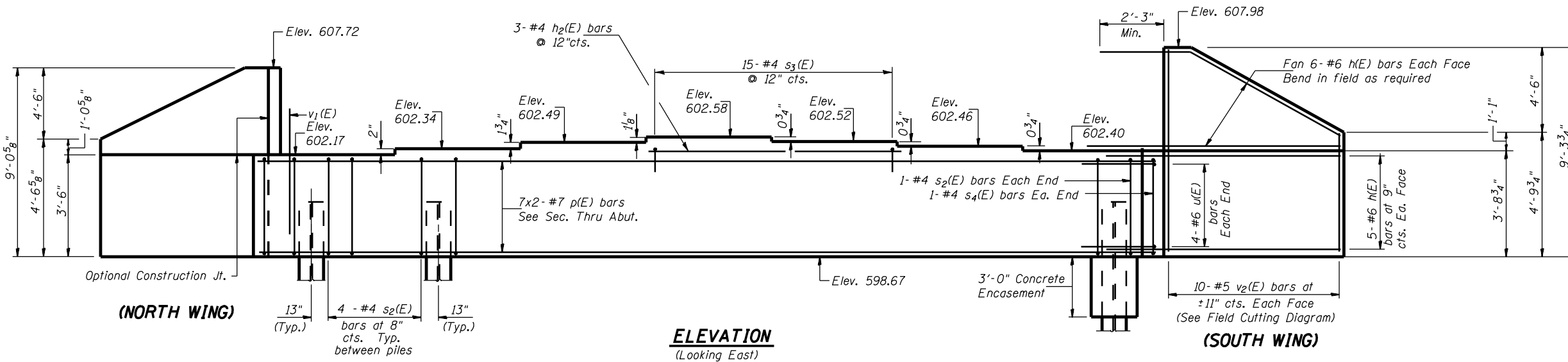


Notes:
Pour steps monolithically with cap.

ROUTE NO.	SEC	COUNTY	TOTAL SHEETS	SHEET NO.
FAP 315	*	HANCOCK	452	193
FED. ROAD DIST. NO. 7	ILLINOIS	PROJECT		
* 34-4B		D-96-551-02		

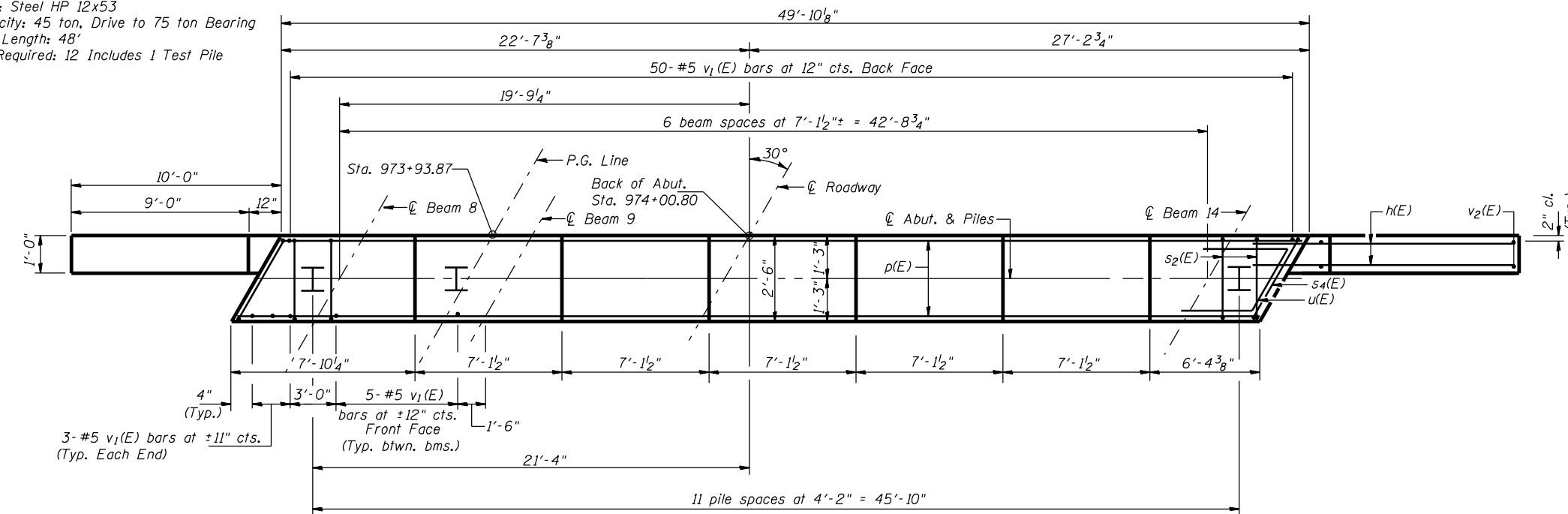
CONTRACT NO. 72680



SEC. THRU ABUT.

PILE DATA

Type: Steel HP 12x53
Capacity: 45 ton, Drive to 75 ton Bearing
Est. Length: 48'
No. Required: 12 Includes 1 Test Pile



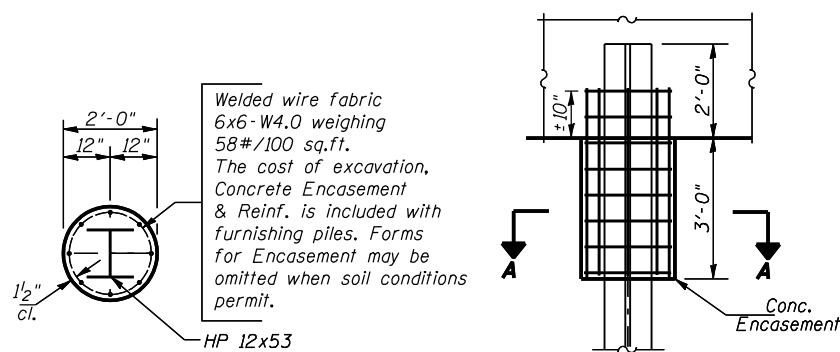
MIN. BAR LAP
#7 bar = 3'-5"

BILL OF MATERIAL

Bar	No.	Size	Length	Shape
h(E)	44	#6	12'-0"	—
h2(E)	3	#4	14'-0"	—
p(E)	14	#7	26'-6"	—
s2(E)	46	#4	11'-5"	□
s3(E)	15	#4	5'-6"	□
s4(E)	2	#4	12'-1"	□
u(E)	8	#6	10'-5"	▤
v1(E)	86	#5	4'-4"	—
v2(E)	20	#5	13'-0"	—
Concrete Structures	CU YD		22.7	
Reinforcement Bars, Epoxy Coated	POUND		2,790	
Structure Excavation	CU YD		140	
Furnishing Steel Piles HP12x53	FOOT		528	
Driving Steel Piles HP12x53	FOOT		528	
Test Pile Steel HP12x53	EACH		1	

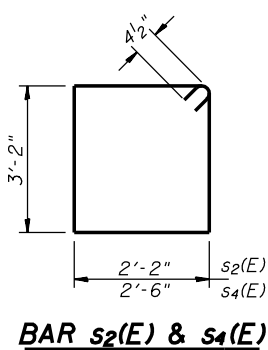
Reinforcement bars designated (E) shall be epoxy coated.
Bars indicated thus 20x3-#5 etc. indicates 20 lines of bars with 3 lengths per line.

PLAN

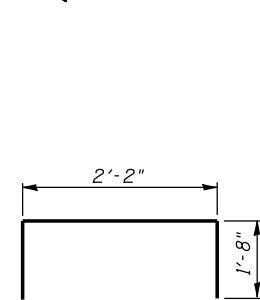


SECTION A-A

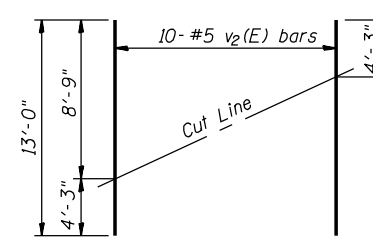
PILE ENCASEMENT DETAIL



BAR s2(E) & s4(E)



BARS s3(E)



FIELD CUTTING DIAGRAM

Order v2(E) full length. Cut as shown and use remainder of bars in opposite face.

EAST ABUTMENT (E.B.L.)
FAP ROUTE 315 OVER PRAIRIE CREEK
SECTION 34-4B
HANCOCK COUNTY
STATION 973+28.00
STR. NO. 034-0506 (WBL)
STR. NO. 034-0507 (EBL)

HUTCHISON ENGINEERING, INC.
JACKSONVILLE, ILLINOIS

Date: January 31, 2006