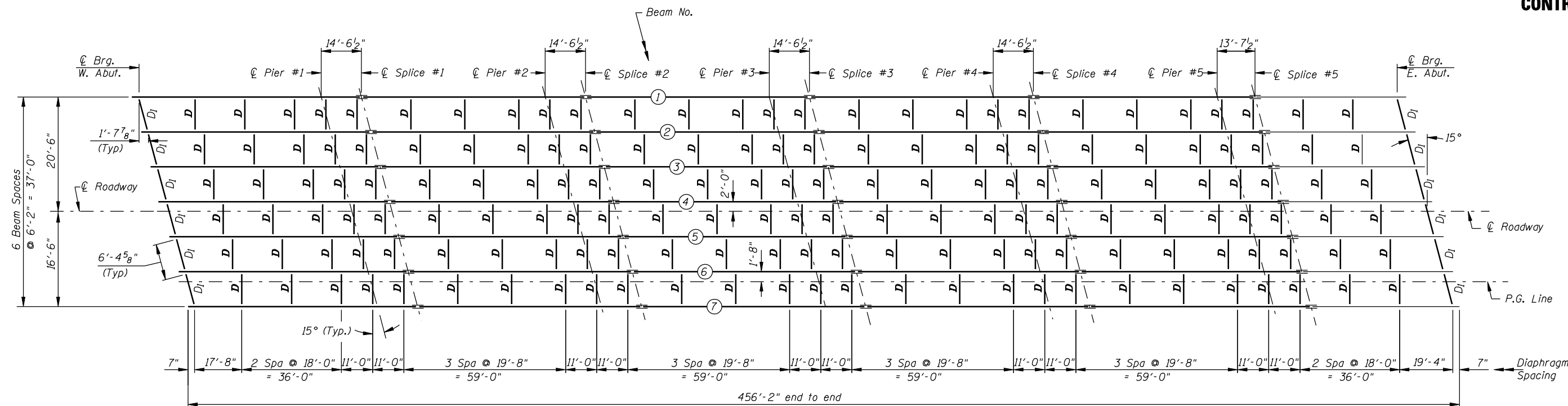
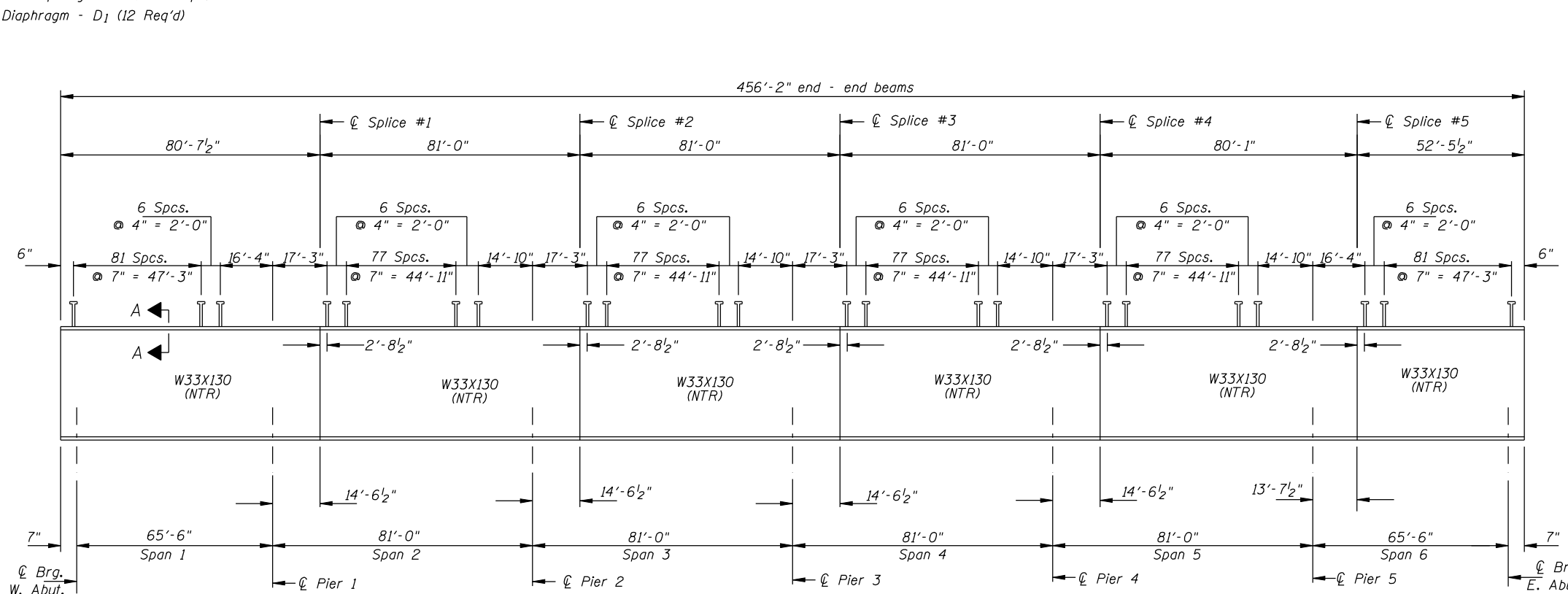


CONTRACT NO. 72680



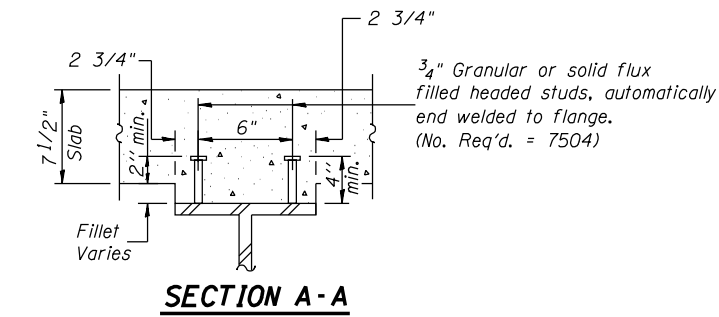
FRAMING PLAN

Interior Diaphragm - D (162 Req'd)
End Diaphragm - D₁ (12 Req'd)



BEAM ELEVATION

"NTR" denotes members to which notch toughness requirements are applicable.



SECTION A-A

DESIGNED	J.O.H.
CHECKED	B.R.T.
DRAWN	T.A.C.
CHECKED	J.O.H.

STRUCTURAL STEEL FRAMING PLAN
U.S. ROUTE 136 OVER
LAMOINE RIVER
F.A.P. RTE. 315 SECTION 34-4B-1
HANCOCK COUNTY
STATION 1153+07.72
STR. NO. 034-0508 (WBL)

HUTCHISON ENGINEERING, INC.
 JACKSONVILLE, ILLINOIS
 Date: January 31, 2006