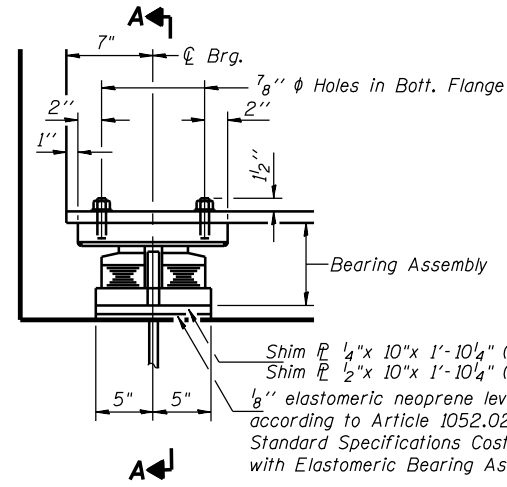
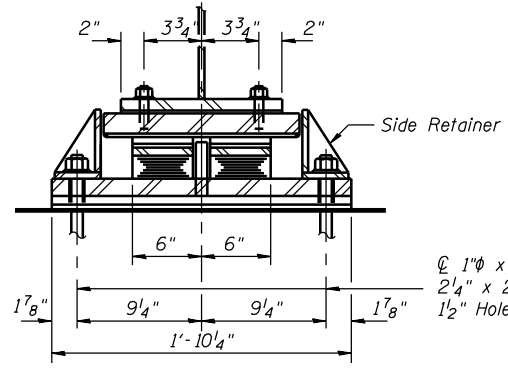


**CONTRACT NO. 72680**



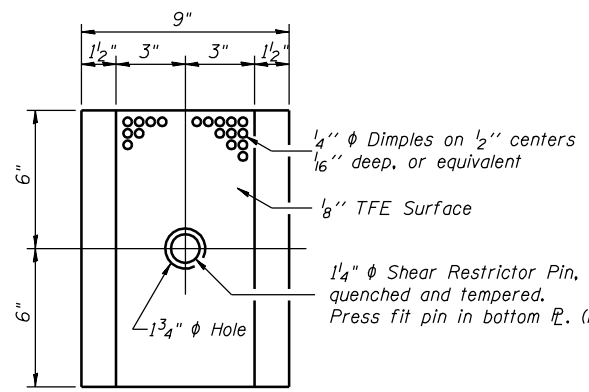
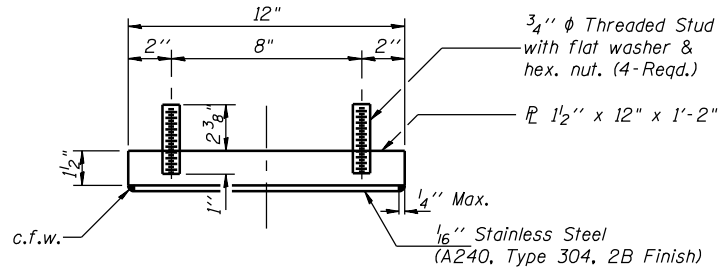
Shim  $\frac{1}{4}$ " x 10" x 1'-10 1/4" (Beam 3)  
Shim  $\frac{1}{2}$ " x 10" x 1'-10 1/4" (Beam 4)  
1/8" elastomeric neoprene leveling pad according to Article 1052.02 of the Standard Specifications Cost included with Elastomeric Bearing Assembly Type II.



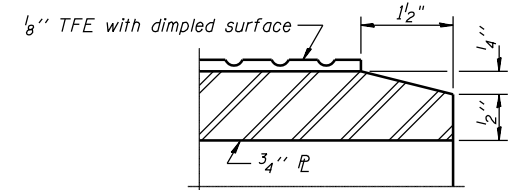
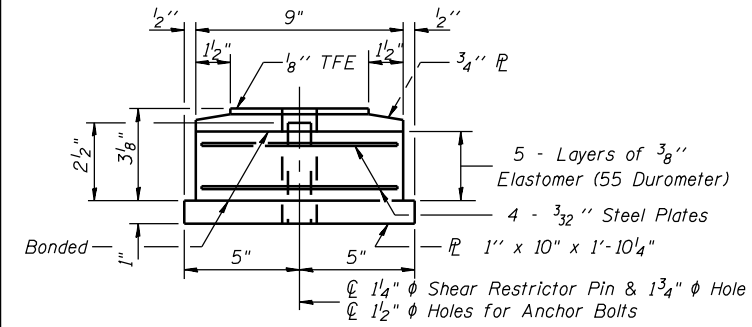
1"  $\phi$  x 12" Anchor bolts with 2 1/4" x 2 1/4" x 5/16"  $\phi$  washer under nut  
1/2" Hole in bottom  $\phi$ .

Notes: See sheet 26 of 34 for Anchor Bolt installation.

**TYPE III ELASTOMERIC EXP. BRG.**

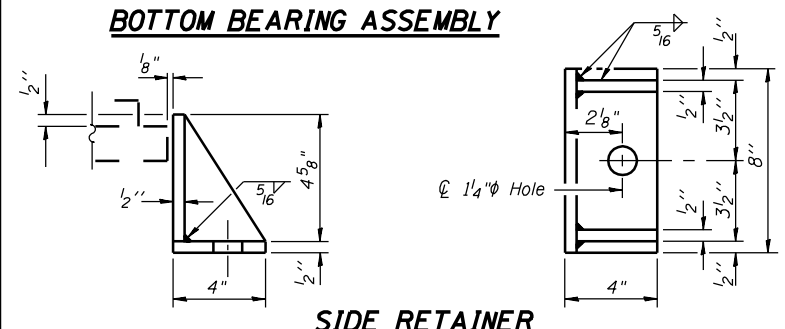


1/4"  $\phi$  Shear Restrictor Pin, AISI 4340, quenched and tempered. Press fit pin in bottom  $\phi$ . (Full depth)

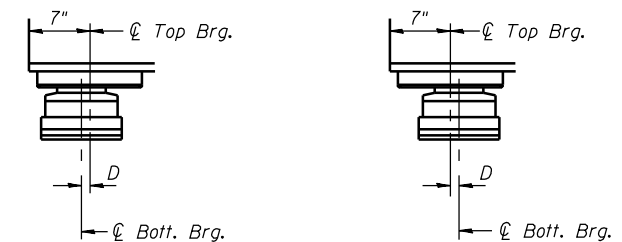


Note: The 1/8" TFE sheet shall be bonded directly to the top steel plate with a two-component, medium viscosity epoxy resin, conforming to the requirements of the Federal Specification MMM-A-134, Type I. The bond agent shall be applied on the full area of the contact surfaces.

Bonding of 1/8" TFE sheet during vulcanizing process will be permitted provided the process and method of adjusting assembly height is approved by the Engineer.



Equivalent rolled angle with stiffeners will be allowed in lieu of welded plates. Weight included with Structural Steel.



BELOW 50° F. (Move bott. brg. away from fixed brg.)  
ABOVE 50° F. (Move bott. brg. toward fixed brg.)

$D = \frac{1}{8}$ " per each 100' of expansion for every 15° temp. change from the normal temp. of 50° F.

**BILL OF MATERIAL**

Item	Unit	Total
Elastomeric Bearing Assembly Type III	Each	7

DESIGNED	J.O.H.
CHECKED	B.R.T.
DRAWN	T.A.C.
CHECKED	J.O.H.

**BEARING DETAILS EAST ABUTMENT  
U.S. ROUTE 136 OVER  
LAMOINE RIVER  
F.A.P. RTE. 315 SECTION 34-4B-1  
HANCOCK COUNTY  
STATION 1153+07.72  
STR. NO. 034-0508 (WBL)**

HUTCHISON ENGINEERING, INC.  
JACKSONVILLE, ILLINOIS  
Date: January 31, 2006