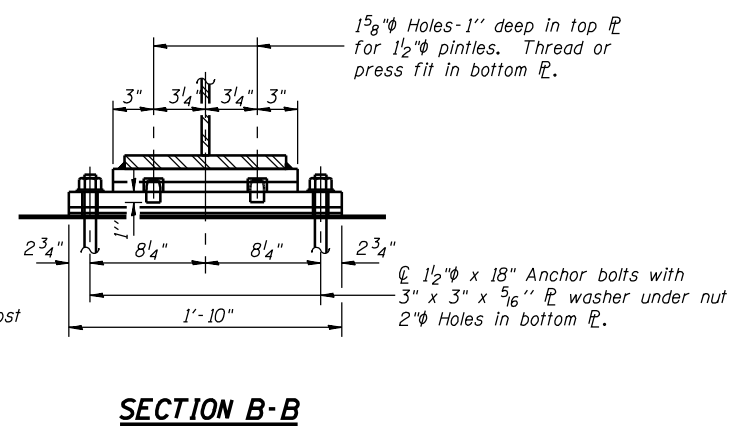
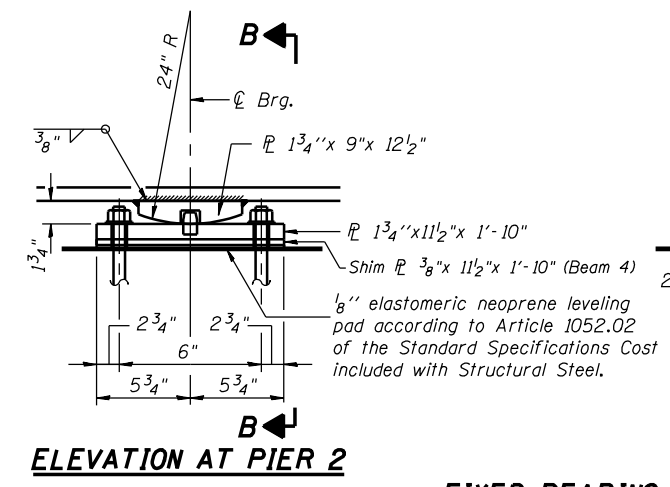
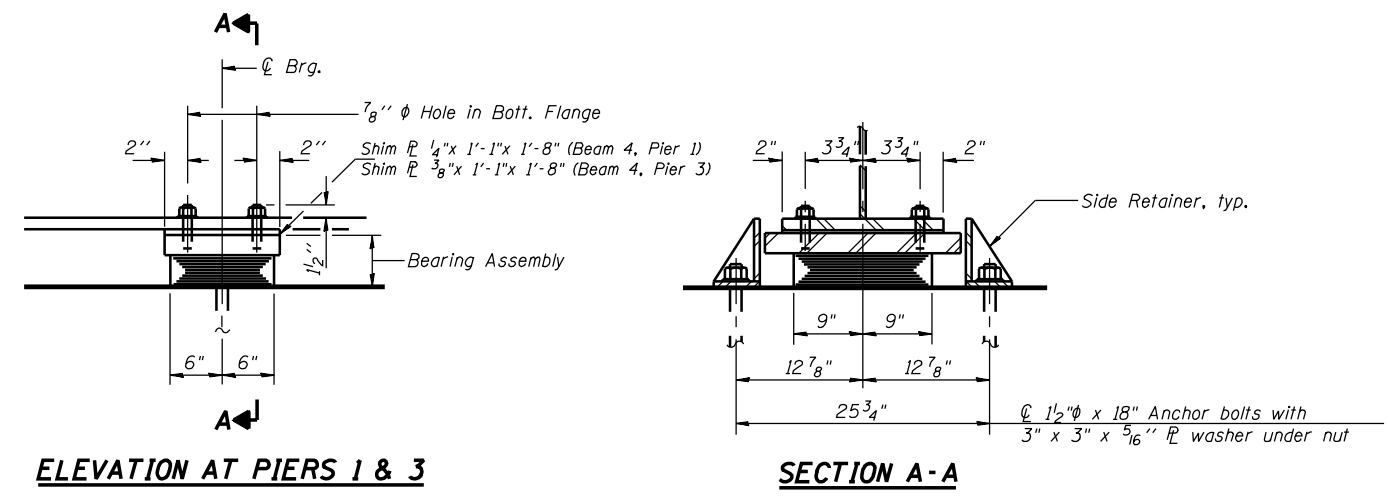


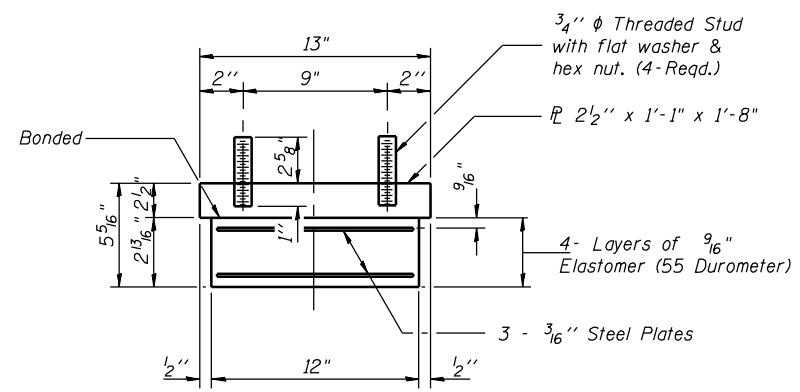
CONTRACT NO. 72680



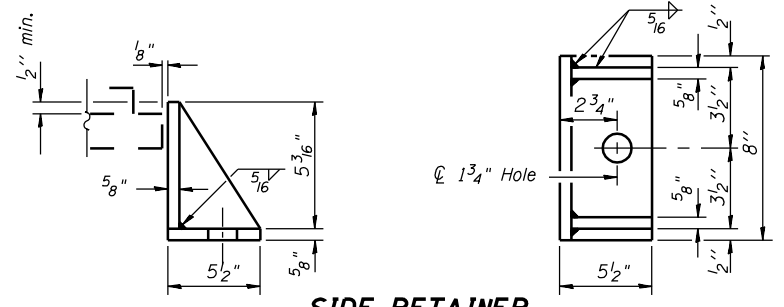
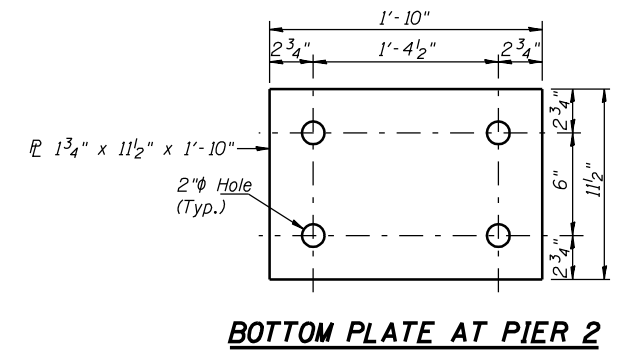
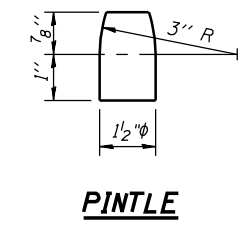
TYPE I ELASTOMERIC EXP. BRG.

Notes: Anchor bolts at fixed bearings may be built into the masonry.
See sheet 26 of 34 for Anchor Bolt installation.

FIXED BEARING
(7 Required)



Note: Shim plates shall not be placed under Bearing Assembly.



Equivalent rolled angle with stiffeners will be allowed in lieu of welded plates.
Weight included with Structural Steel.

BILL OF MATERIAL

Item	Unit	Total
Elastomeric Bearing Assembly Type I	Each	14

DESIGNED	J.O.H.
CHECKED	B.R.T.
DRAWN	T.A.C.
CHECKED	J.O.H.

**BEARING DETAILS
PIERS 1, 2 & 3
U.S. ROUTE 136 OVER
LAMOINE RIVER
F.A.P. RTE. 315 SECTION 34-4B-1
HANCOCK COUNTY
STATION 1153+07.72
STR. NO. 034-0508 (WBL)**

HUTCHISON ENGINEERING, INC.
JACKSONVILLE, ILLINOIS
Date: January 31, 2006