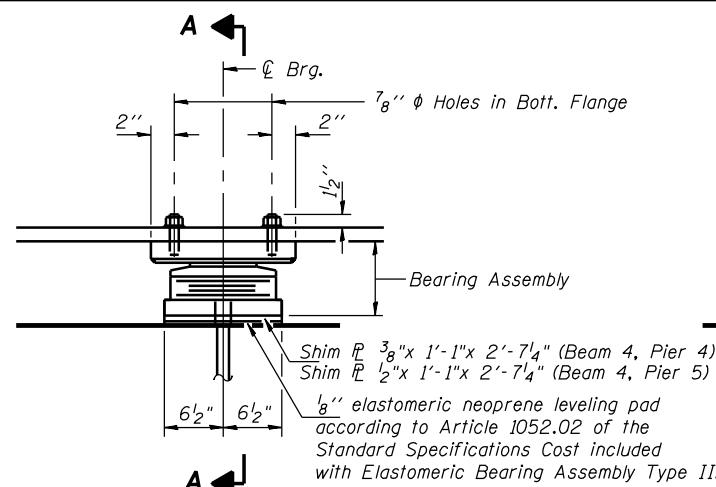
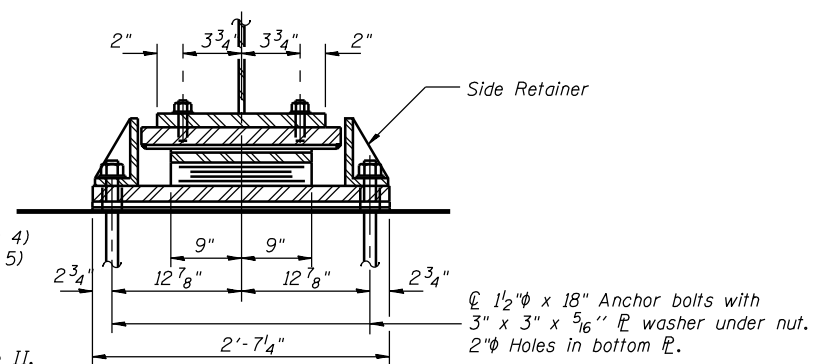


D-96-551-02  
**CONTRACT NO. 72680**



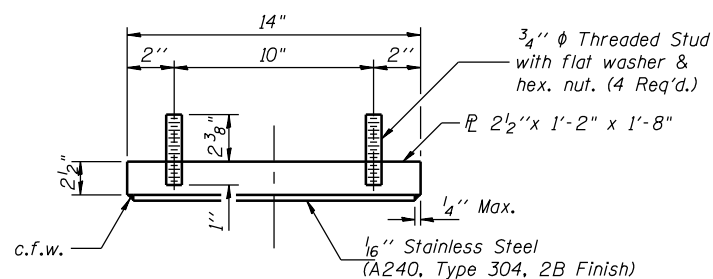
**ELEVATION AT PIERS 4 & 5**



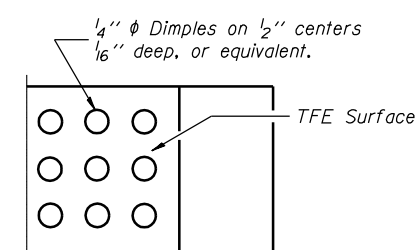
**SECTION A-A**

**TYPE II ELASTOMERIC EXP. BRG.**

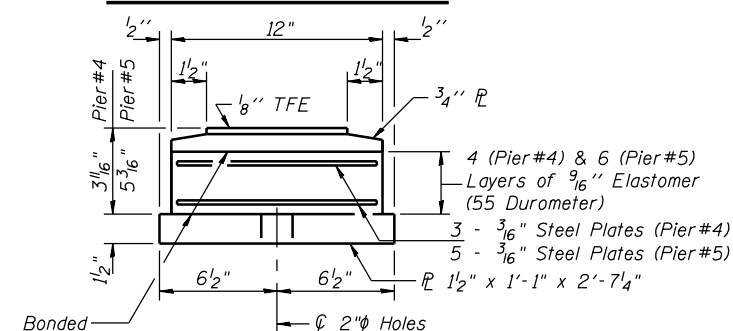
Notes: See sheet 26 of 34 for Anchor Bolt installation.



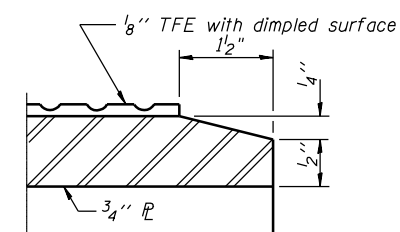
**TOP BEARING ASSEMBLY**



**PLAN-TFE SURFACE**



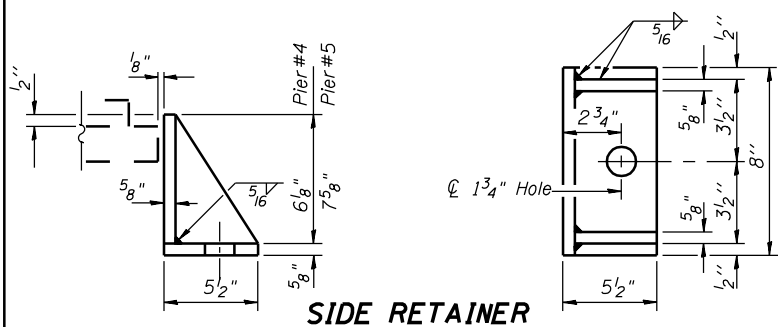
**BOTTOM BEARING ASSEMBLY**



**SECTION THRU TFE**

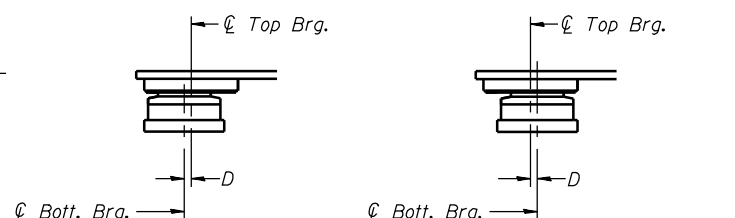
Note: The 1/8" TFE sheet shall be bonded directly to the top steel plate with a two-component, medium viscosity epoxy resin, conforming to the requirements of the Federal Specification MMM-A-134, Type I. The bond agent shall be applied on the full area of the contact surfaces.

Bonding of 1/8" TFE sheet during vulcanizing process will be permitted provided the process and method of adjusting assembly height is approved by the Engineer.



**SIDE RETAINER**

Equivalent rolled angle with stiffeners will be allowed in lieu of welded plates. Weight included with Structural Steel.



**SETTING ANCHOR BOLTS AT EXP. BRG.**

D=1/8" per each 100' of expansion for every 15° temp. change from the normal temp. of 50°F.

**BILL OF MATERIAL**

Item	Unit	Total
Elastomeric Bearing Assembly Type II	Each	14

DESIGNED	J.O.H.
CHECKED	B.R.T.
DRAWN	T.A.C.
CHECKED	J.O.H.

**BEARING DETAILS  
PIERS 4 & 5  
U.S. ROUTE 136 OVER  
LAMOINE RIVER  
F.A.P. RTE. 315 SECTION 34-4B-1  
HANCOCK COUNTY  
STATION 1153+07.72  
STR. NO. 034-0508 (WBL)**

HUTCHISON ENGINEERING, INC.  
JACKSONVILLE, ILLINOIS  
Date: January 31, 2006