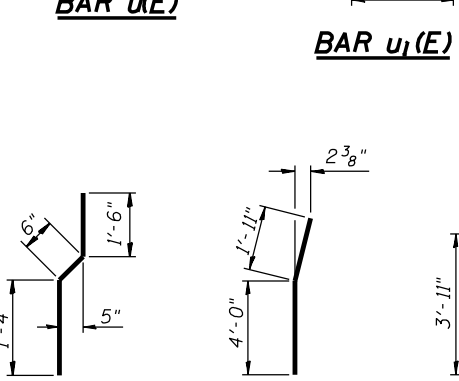
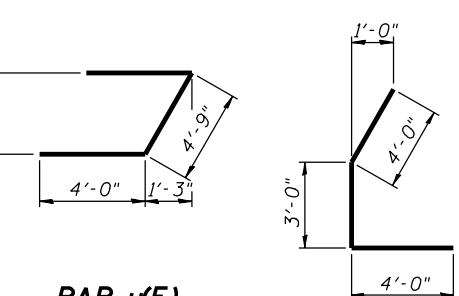
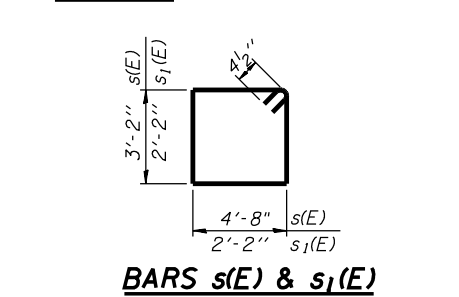
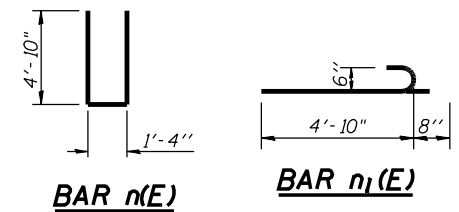
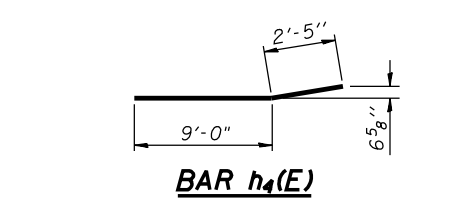
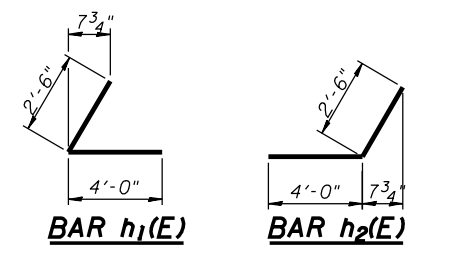
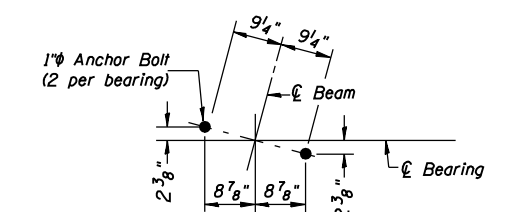
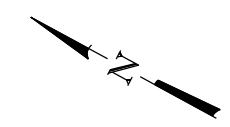
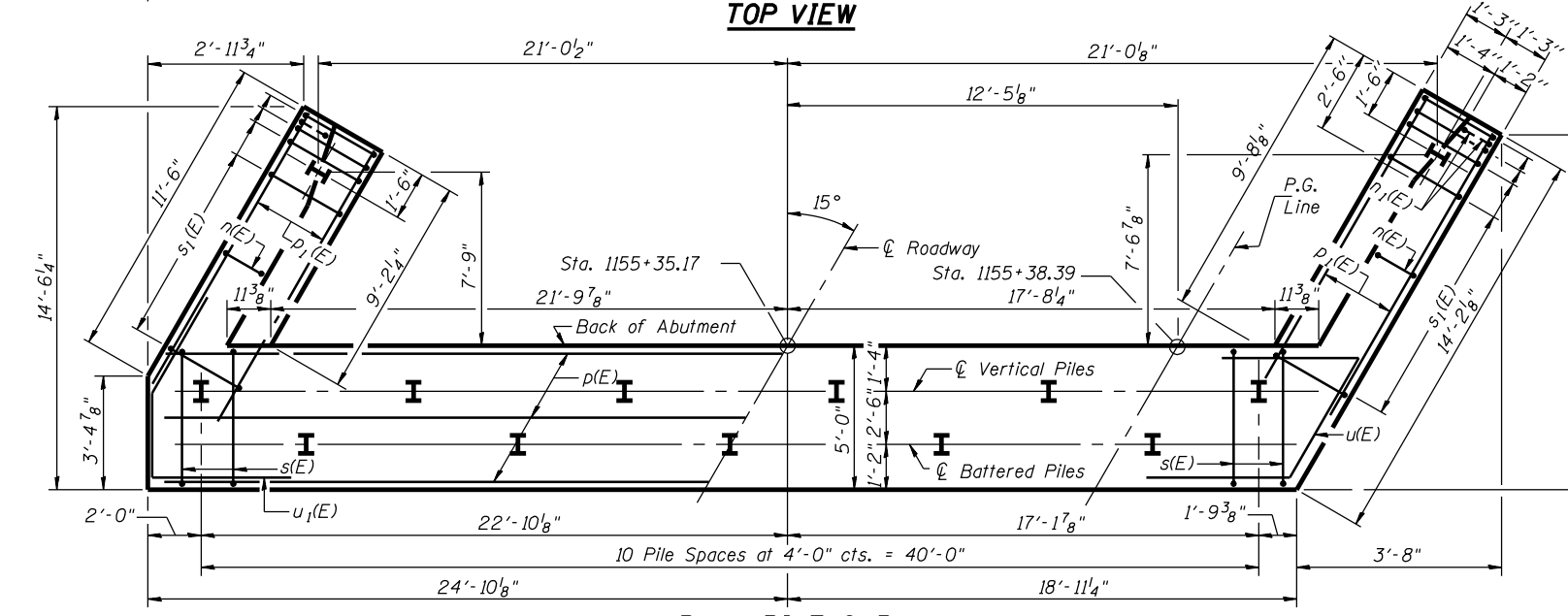
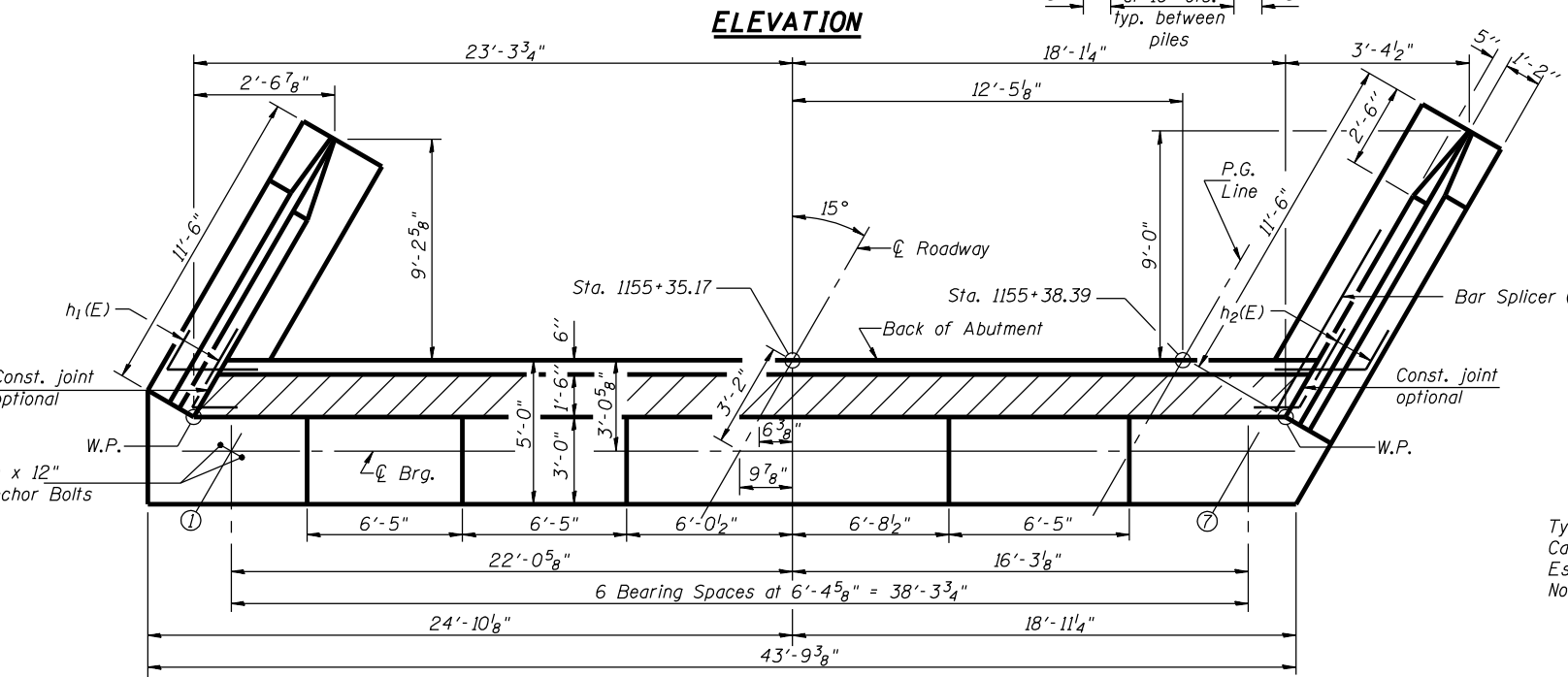
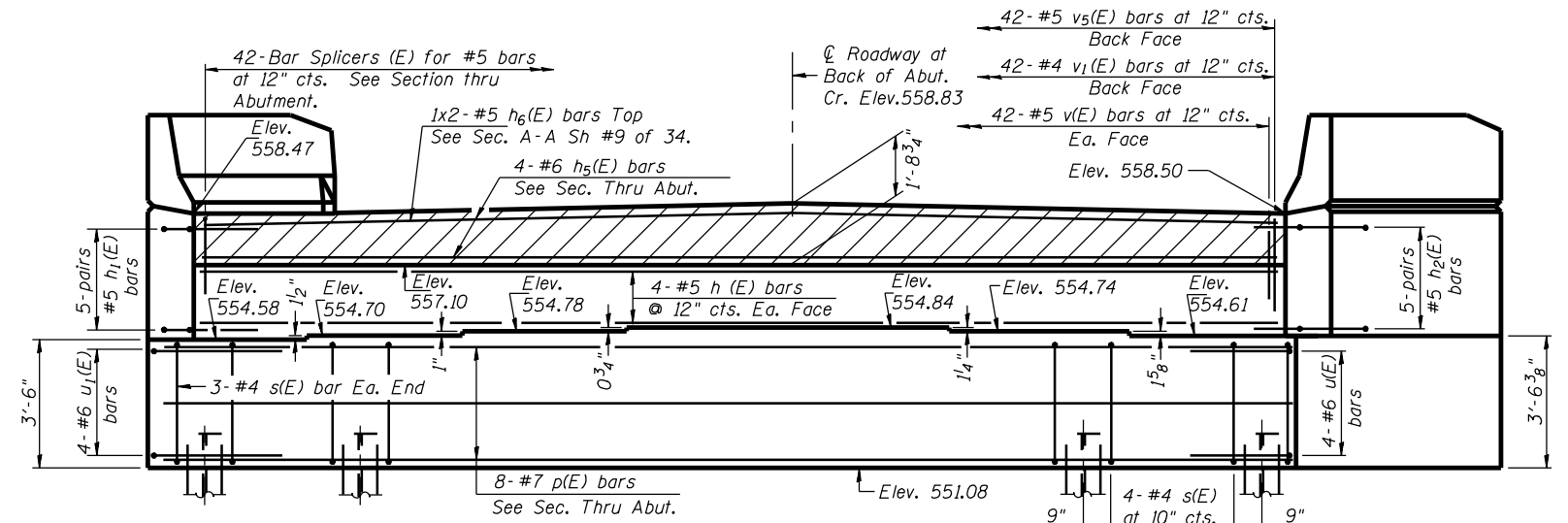


CONTRACT NO. 72680



DESIGNED	J.O.H.
CHECKED	B.R.T.
DRAWN	T.A.C.
CHECKED	J.O.H.



ANCHOR BOLT LAYOUT

**EAST ABUTMENT
BILL OF MATERIAL**

Bar	No.	Size	Length	Shape
h(E)	8	#5	41'-0"	—
h1(E)	10	#5	6'-6"	└
h2(E)	10	#5	6'-6"	└
h3(E)	22	#4	11'-3"	—
h4(E)	14	#4	11'-5"	—
h5(E)	4	#6	41'-0"	—
h6(E)	2	#5	21'-9"	—
n(E)	20	#6	11'-0"	—
n1(E)	12	#6	5'-6"	—
p(E)	8	#7	43'-6"	—
p1(E)	12	#7	12'-0"	—
s(E)	46	#4	16'-5"	□
s1(E)	26	#4	9'-5"	□
u(E)	4	#6	12'-9"	└
u1(E)	4	#6	11'-0"	└
v(E)	84	#5	5'-0"	—
v1(E)	42	#4	3'-4"	—
v2(E)	24	#6	6'-4"	—
v3(E)	6	#6	5'-11"	—
v4(E)	20	#6	6'-7"	—
v5(E)	42	#5	2'-6"	—
Structure Excavation		Cu. Yd.	185	
Concrete Structures		Cu. Yd.	46.3	
Reinforcement Bars, Epoxy Coated		Pound	4,410	
Steel Piles HP 12x53		Foot	888	
Test Pile Steel HP12x53		Each	1	

MIN BAR LAP
#5 = 2'-2"

PILE DATA
Type: Steel HP 12x53
Capacity: Drive to Refusal
Est. Length: 74'
No. Required: 12 plus 1 Test Pile

Notes: Reinforcement bars designated (E) shall be epoxy coated.
For details of Bar Splicers, see sheet 25 of 34.
Space reinforcement in cap to miss anchor bolts.
Pour steps monolithically with cap.
All edges shall have standard 3/4" chamfers.

**EAST ABUTMENT
U.S. ROUTE 136 OVER
LAMOINE RIVER
F.A.P. RTE. 315 SECTION 34-4B-1
HANCOCK COUNTY
STATION 1153+07.72
STR. NO. 034-0508 (WBL)**

HUTCHISON ENGINEERING, INC.
JACKSONVILLE, ILLINOIS
Date: January 31, 2006