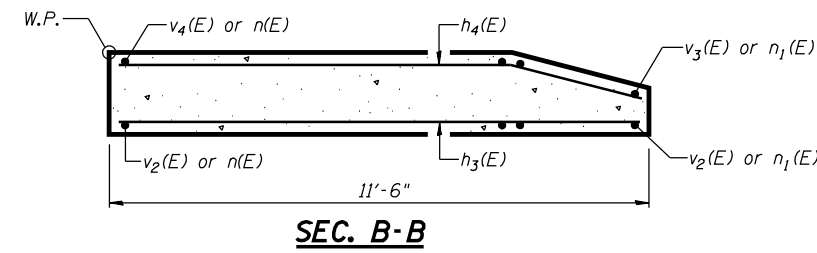
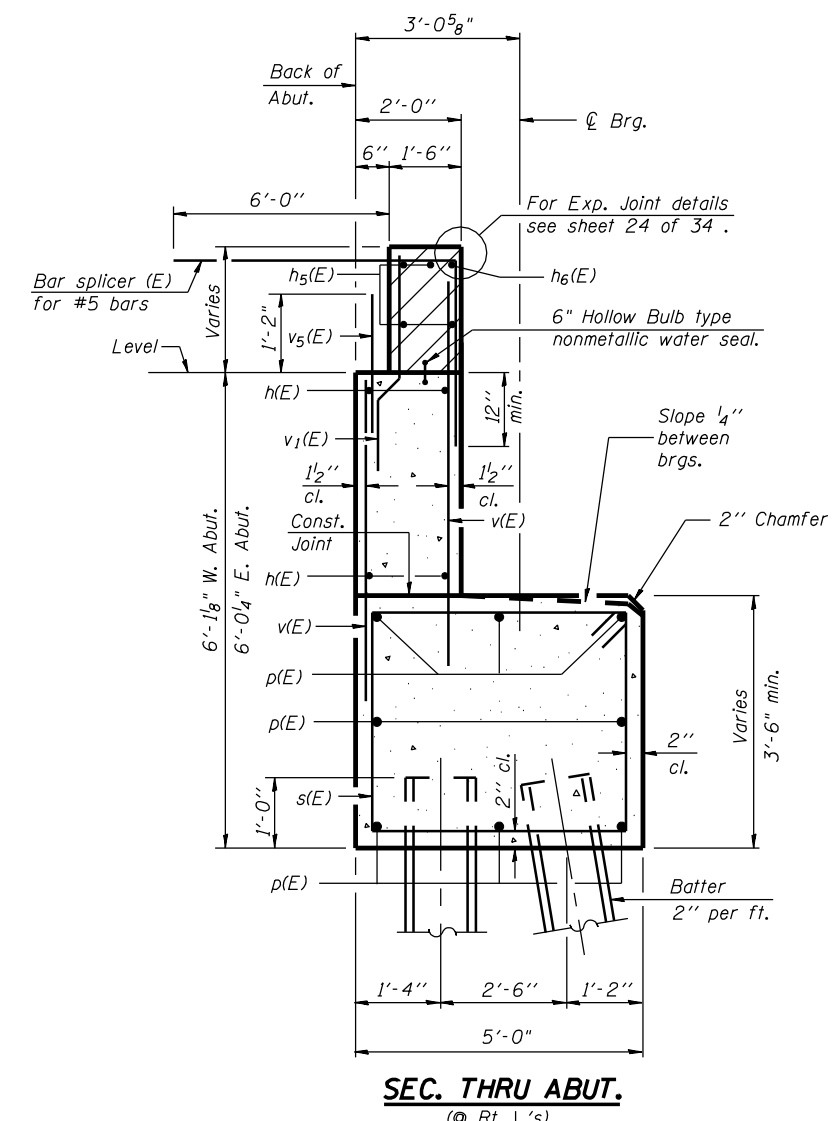
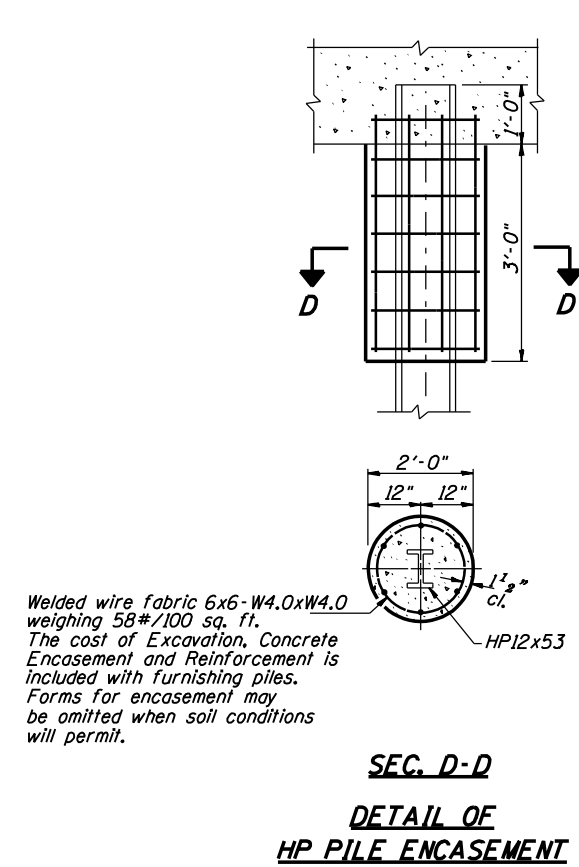
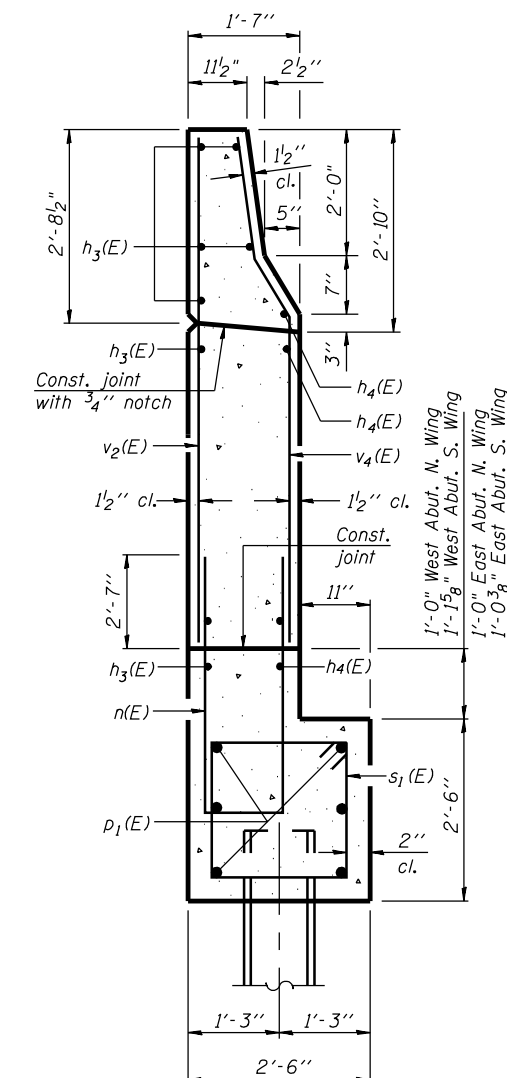
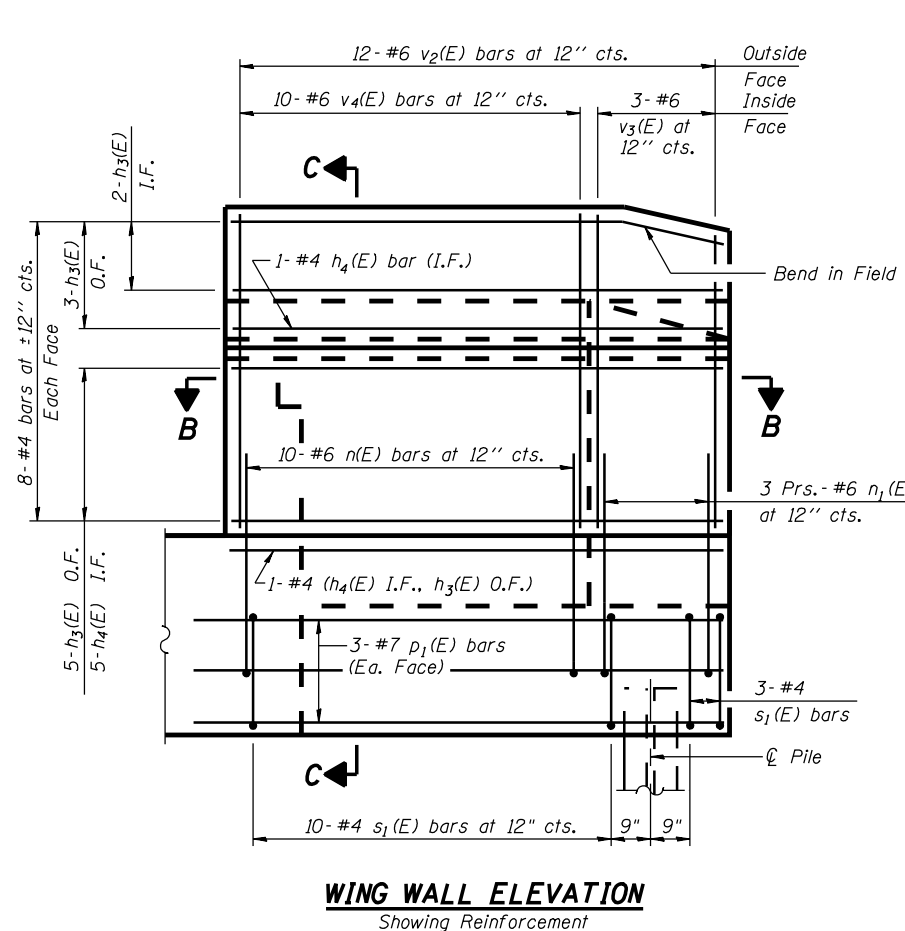
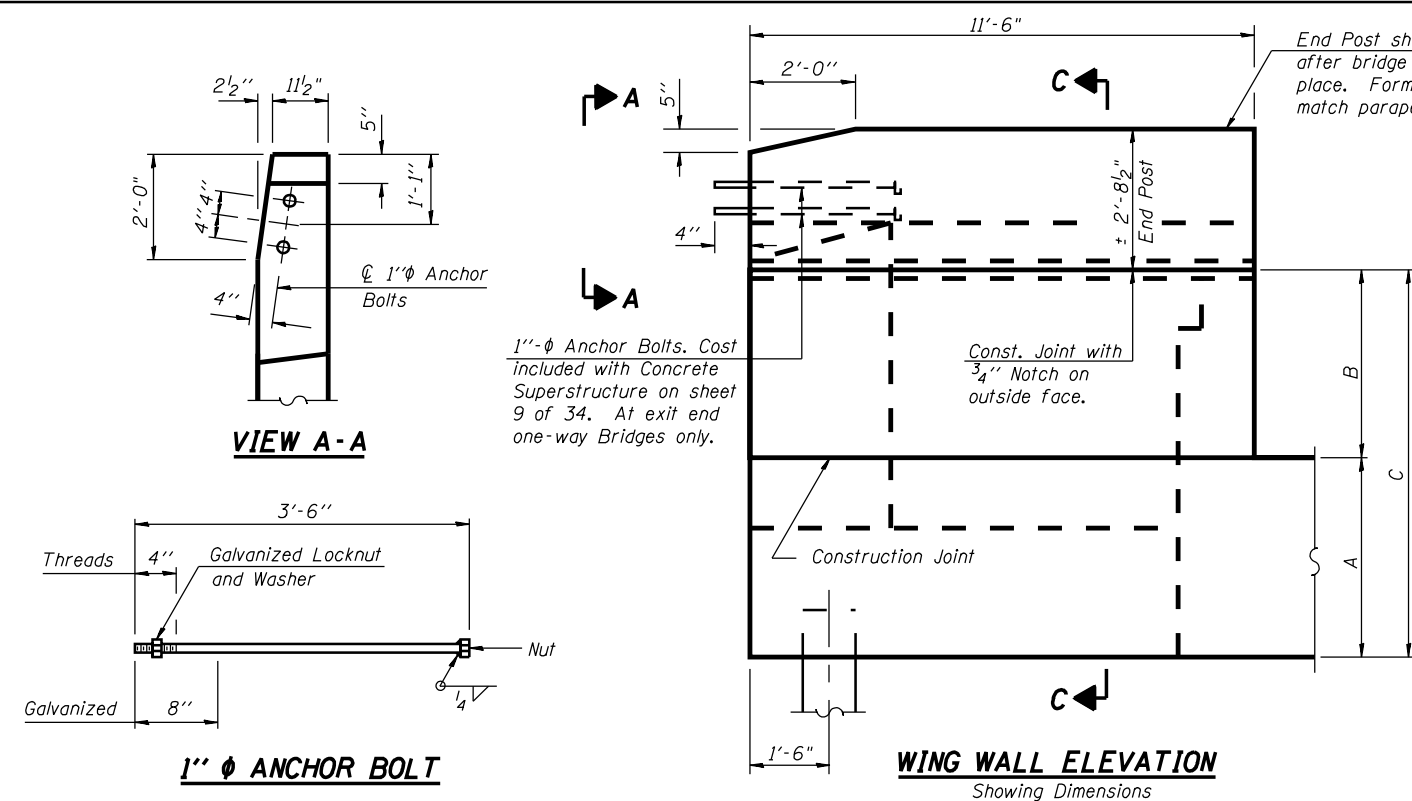


**CONTRACT NO. 72680**

**ABUTMENT DIMENSIONS**

Location		A	B	C
West Abut.	N. Wing	3'-6"	3'-10 <sup>3</sup> / <sub>4</sub> "	7'-4 <sup>3</sup> / <sub>4</sub> "
	S. Wing	3'-7 <sup>5</sup> / <sub>8</sub> "	3'-10 <sup>3</sup> / <sub>4</sub> "	7'-6 <sup>5</sup> / <sub>8</sub> "
East Abut.	N. Wing	3'-6"	3'-10 <sup>3</sup> / <sub>4</sub> "	7'-4 <sup>3</sup> / <sub>4</sub> "
	S. Wing	3'-6 <sup>3</sup> / <sub>8</sub> "	3'-10 <sup>3</sup> / <sub>4</sub> "	7'-5 <sup>1</sup> / <sub>8</sub> "



Notes: Hatched area to be poured after superstructure forms have been removed. Quantity of concrete included with Concrete Superstructure. Space reinforcement in cap to miss anchor bolts. Pour steps monolithically with cap. Reinforcement bars designated (E) shall be epoxy coated. Quantity of concrete in end post included with Concrete Superstructure on sheet 9 of 34.

DESIGNED	J.O.H.
CHECKED	B.R.T.
DRAWN	T.A.C.
CHECKED	J.O.H.

**ABUTMENT DETAILS**  
**U.S. ROUTE 136 OVER**  
**LAMOINE RIVER**  
**F.A.P. RTE. 315 SECTION 34-4B-1**  
**HANCOCK COUNTY**  
**STATION 1153+07.72**  
**STR. NO. 034-0508 (WBL)**

HUTCHISON ENGINEERING, INC.  
JACKSONVILLE, ILLINOIS  
Date: January 31, 2006