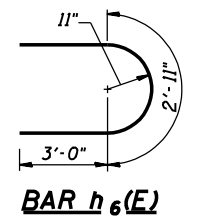
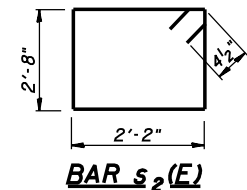
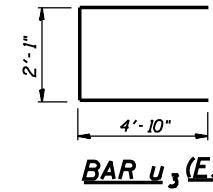
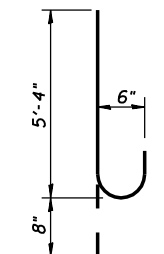
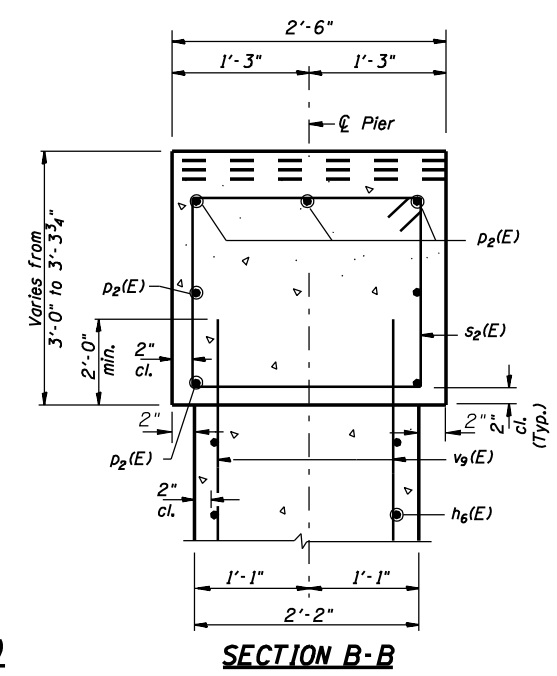
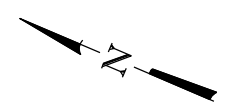
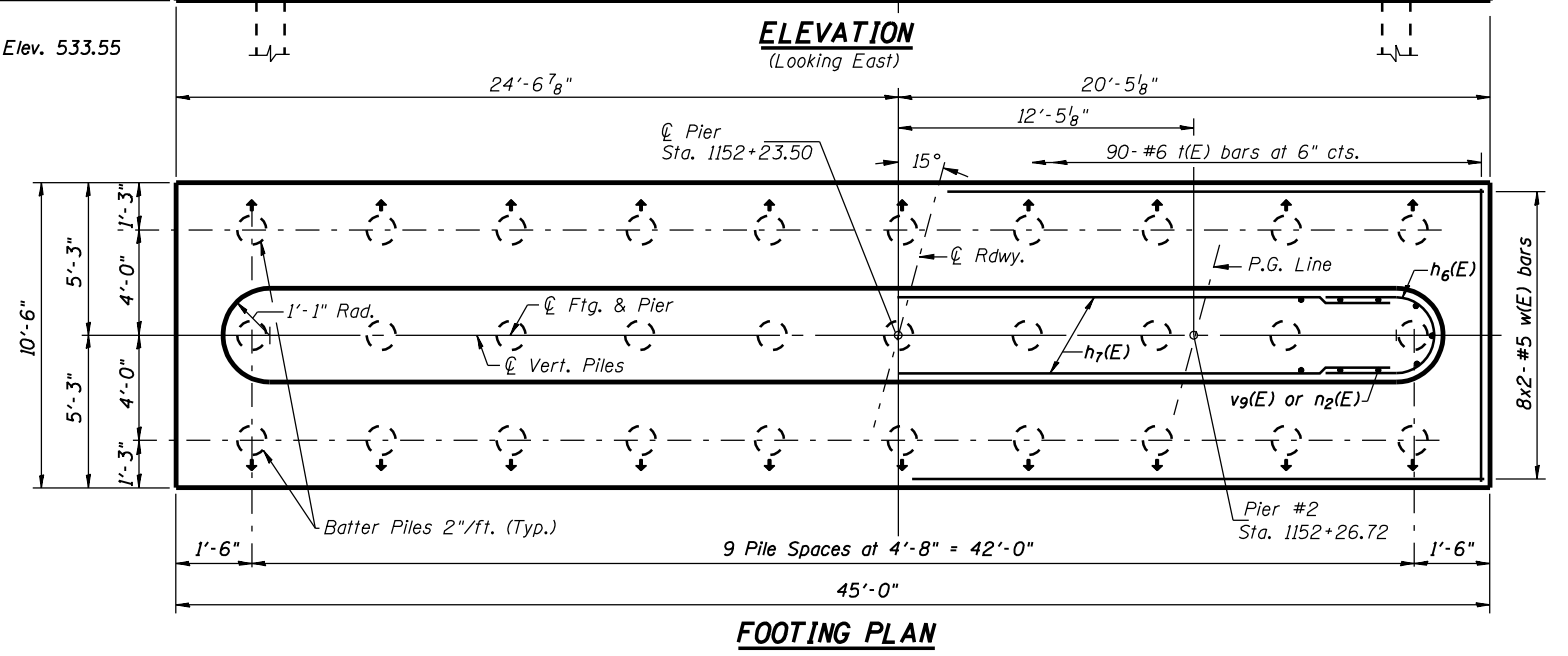
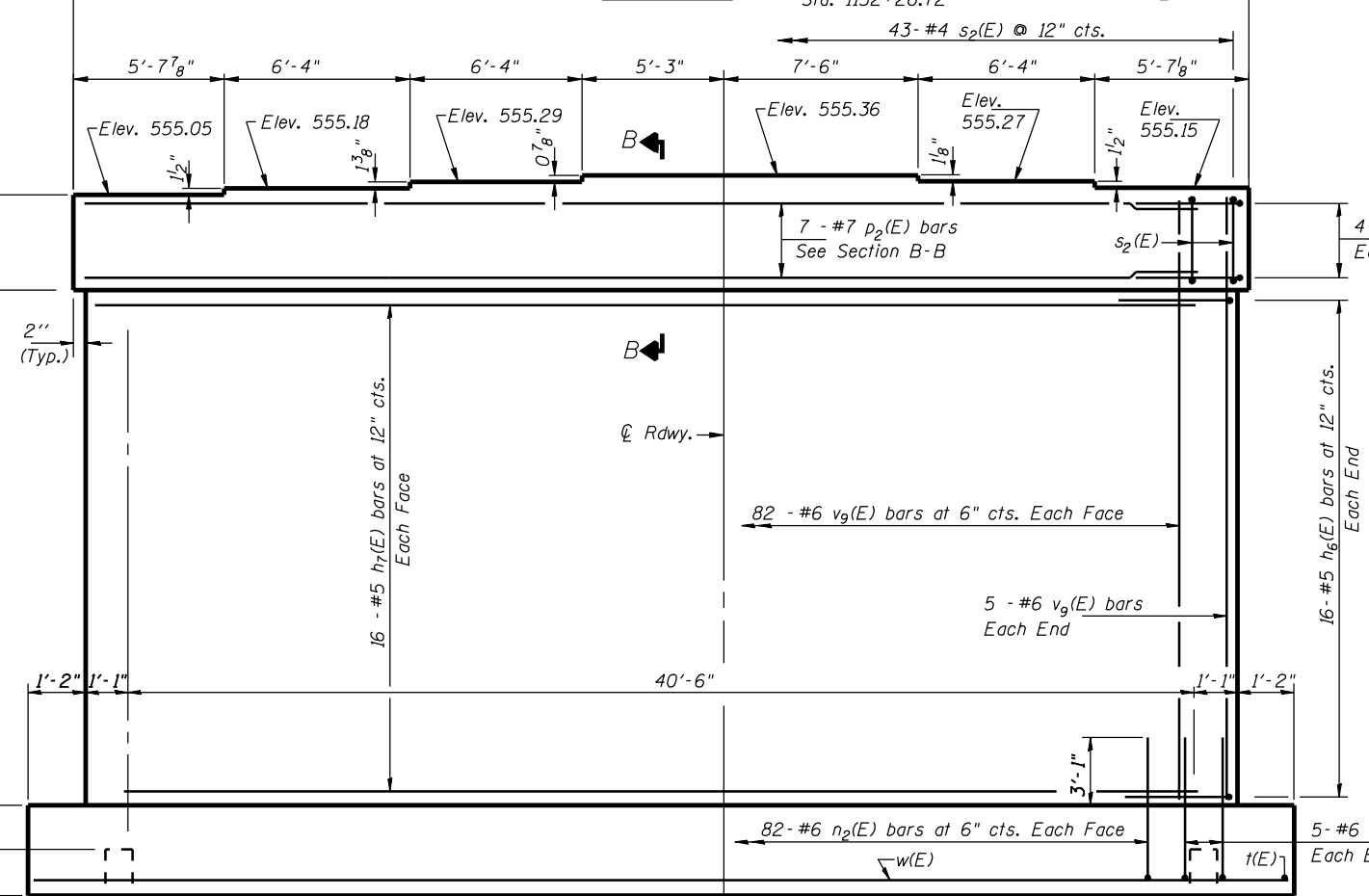
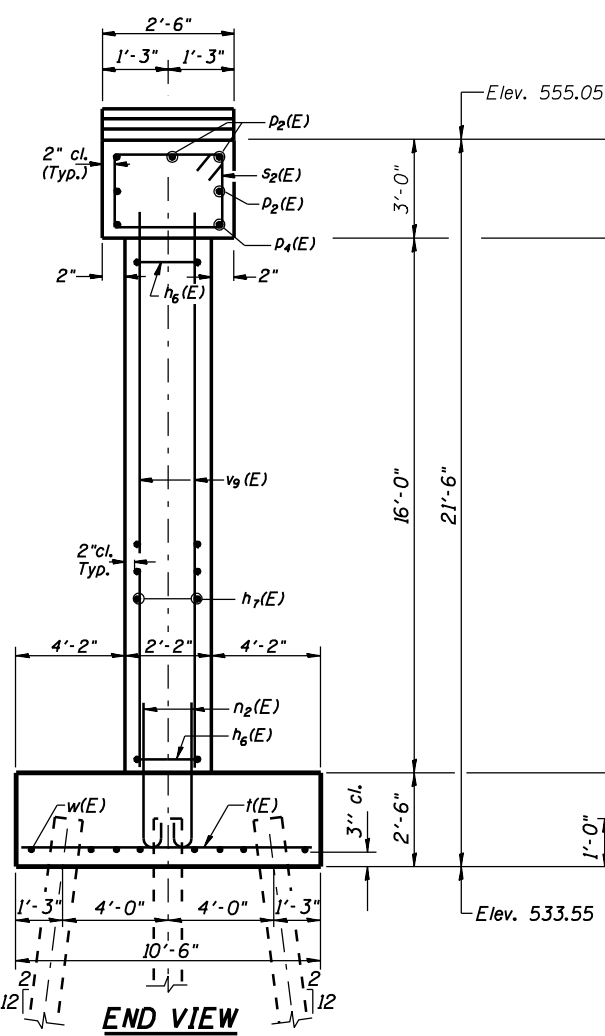
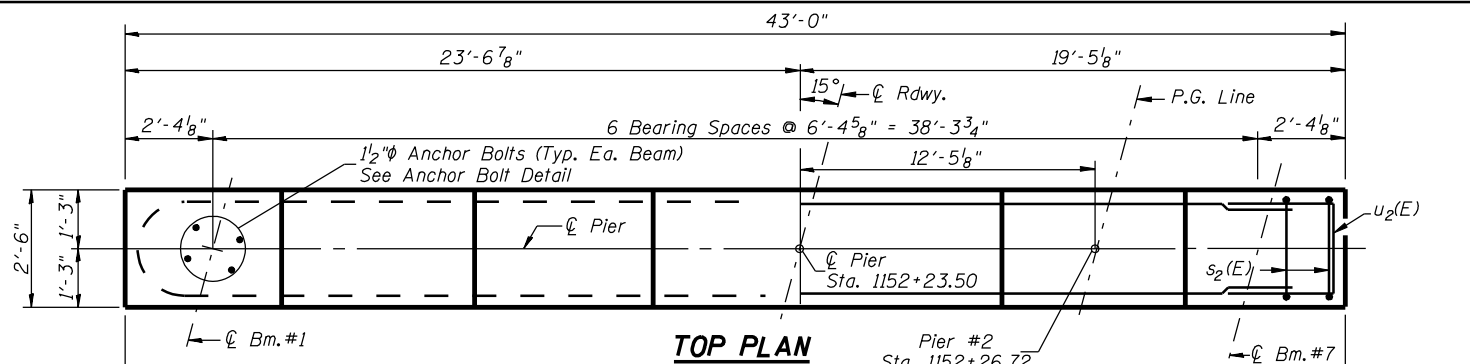
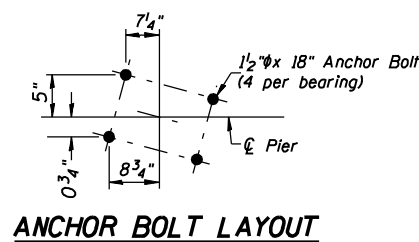


Notes: Space reinforcement in cap to miss anchor bolts.
 Four steps monolithically with cap.
 All edges shall have standard 3/4" chamfers.

D-96-551-02
CONTRACT NO. 72680

F.A.P. RTE. NO.	SECTION	COUNTY	TOTAL SHEETS	SHEET NO.
315	34-4B-1	HANCOCK	452	218
FED. ROAD DIST. NO.	ILLINOIS	FED. AID PROJECT		SHEET NO. 20 34 SHEETS



MIN BAR LAP
 #5 = 2'-2"

BILL OF MATERIAL

Bar	No.	Size	Length	Shape
h ₆ (E)	32	#5	8'-11"	U
h ₇ (E)	32	#5	38'-10"	—
n ₂ (E)	174	#6	6'-0"	U
p ₂ (E)	7	#7	42'-8"	—
s ₂ (E)	43	#4	10'-5"	□
t(E)	90	#6	10'-2"	—
u ₃ (E)	8	#6	11'-9"	U
v ₉ (E)	174	#6	18'-0"	—
w(E)	16	#5	23'-6"	—
Concrete Structures		CU YD	109.5	
Reinforcement Bars, Epoxy Coated		POUND	10,680	
Metal Shell Piles, 14"		FOOT	1,189	
Test Pile Metal Shells		EACH	1	
Structure Excavation		CU YD	182	

Reinforcement Bars designated (E) shall be epoxy coated.
 Bars indicated thus 8x2-#5, etc. indicates 8 lines of bars with 2 lengths per line.

DESIGNED	J.O.H.
CHECKED	B.R.T.
DRAWN	T.A.C.
CHECKED	J.O.H.

PIER 2
U.S. ROUTE 136 OVER
LAMOINE RIVER
F.A.P. RTE. 315 SECTION 34-4B-1
HANCOCK COUNTY
STATION 1153+07.72
STR. NO. 034-0508 (WBL)

HUTCHISON ENGINEERING, INC.
 JACKSONVILLE, ILLINOIS
 Date: January 31, 2006