

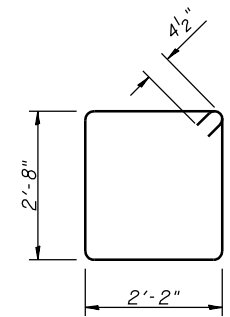
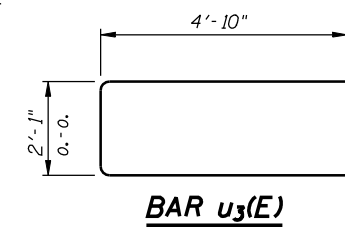
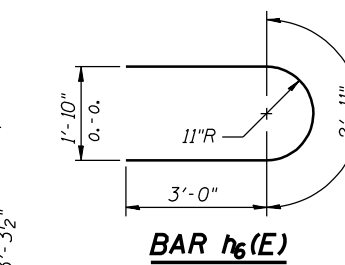
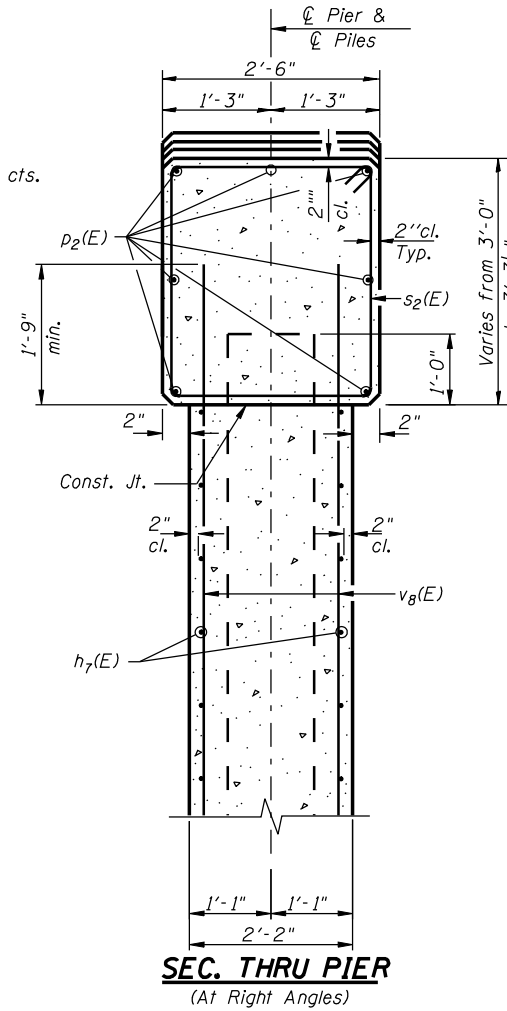
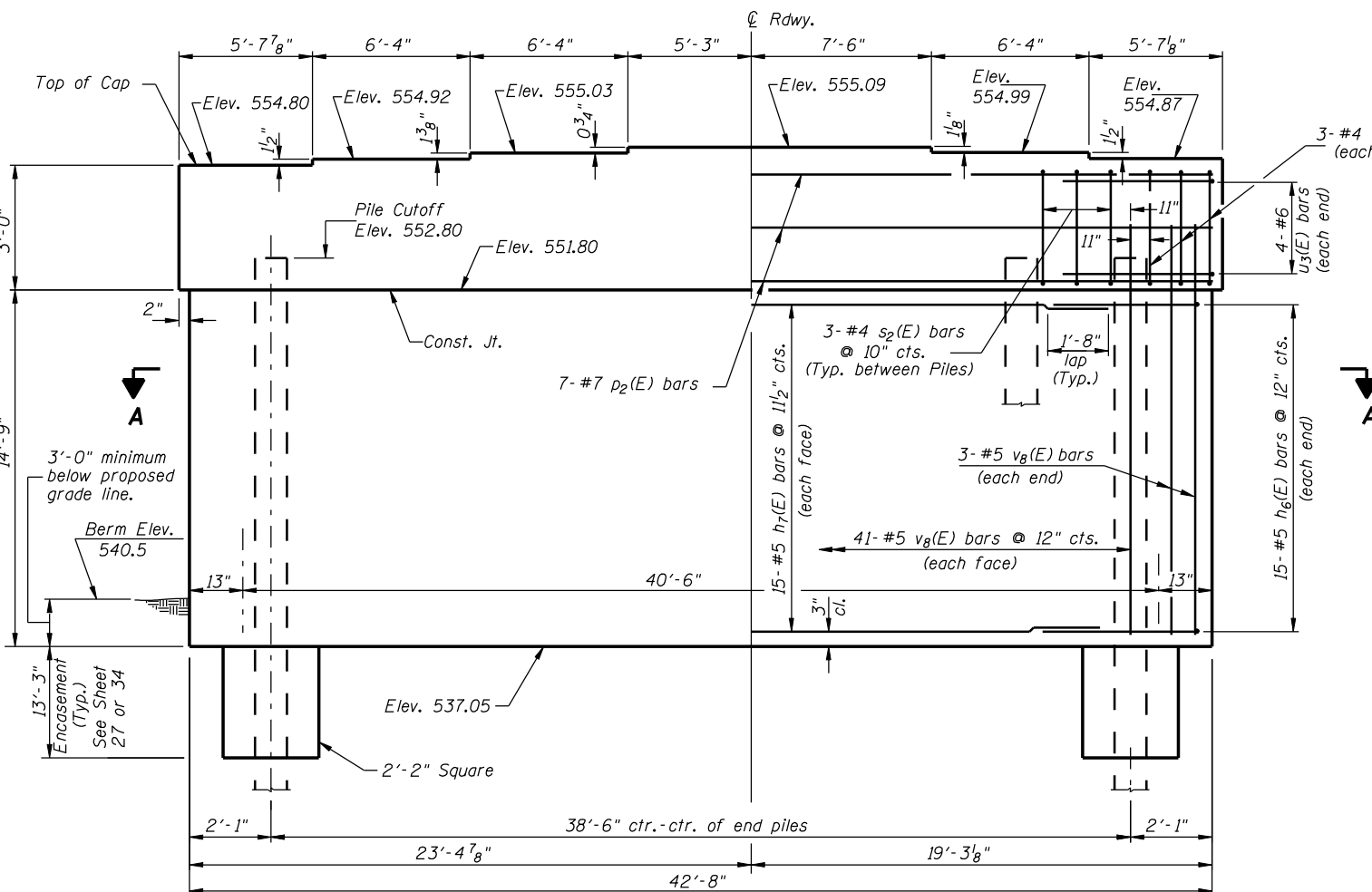
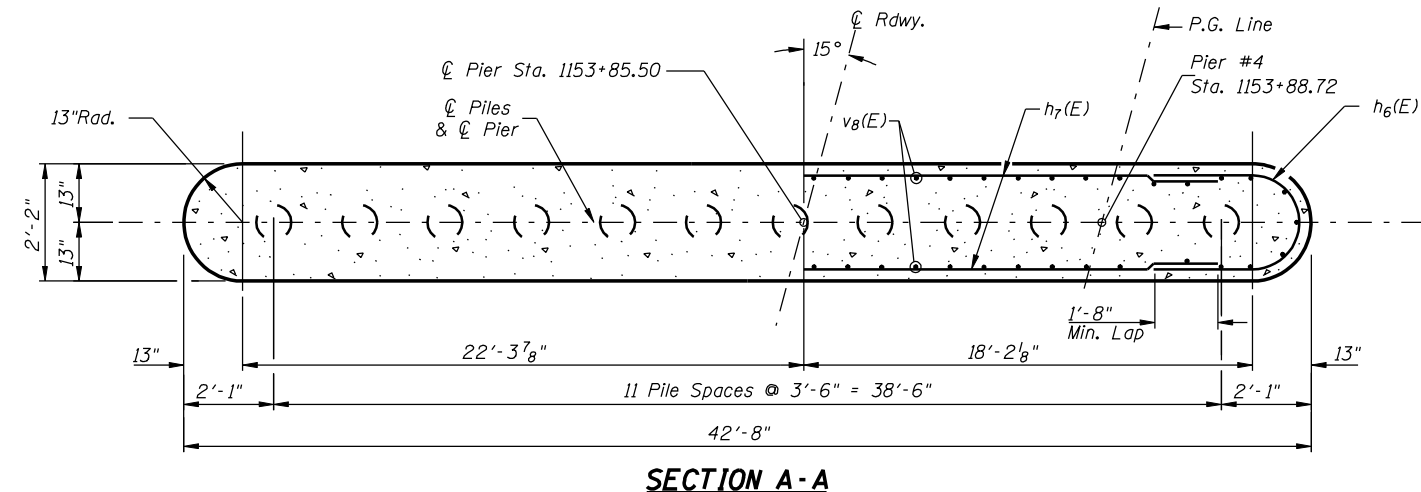
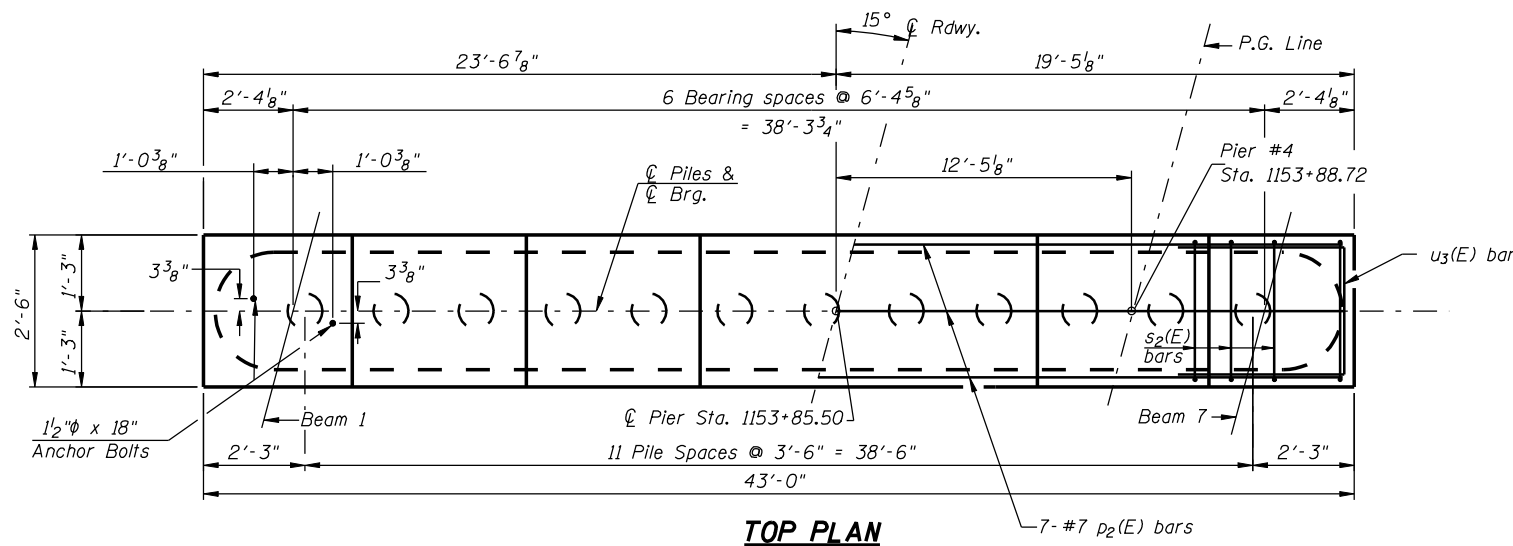
**CONTRACT NO. 72680**

**PILE DATA**

Type: Metal Pile Shells, 14"  
Capacity: 55 Tons  
Est. Length: 60 Ft.  
No. Required: 11 plus 1 Test Pile

**NOTES**

1. Space Reinforcement in cap to miss anchor bolts.
2. All edges shall have standard 3/4" chamfers.
3. Pour steps monolithically with cap.



**BILL OF MATERIAL  
BAR LIST FOR ONE PIER**

Bar	No.	Size	Length	Shape
h <sub>6</sub> (E)	30	#5	8'-11"	□
h <sub>7</sub> (E)	30	#5	38'-10"	—
p <sub>2</sub> (E)	7	#7	42'-8"	—
s <sub>2</sub> (E)	39	#4	10'-5"	□
u <sub>3</sub> (E)	8	#6	11'-9"	□
v <sub>8</sub> (E)	88	#5	16'-6"	—
Concrete Structures		CU YD	55.1	
Reinforcement Bars, Epoxy Coated		POUND	4,030	
Metal Pile Shells, 14"		FOOT	660	
Test Pile Metal Shells		EACH	1	
Structure Excavation		CU YD	37	
Underwater Excavation Protection, Location 2		EACH	1	
Concrete Encasement		CU YD	21.3	

Reinforcement bars designated (E) shall be epoxy coated.

**PIER 4**  
**U.S. ROUTE 136 OVER**  
**LAMOINE RIVER**  
**F.A.P. RTE. 315 SECTION 34-4B-1**  
**HANCOCK COUNTY**  
**STATION 1153+07.72**  
**STR. NO. 034-0508 (WBL)**

HUTCHISON ENGINEERING, INC.  
JACKSONVILLE, ILLINOIS  
Date: January 31, 2006

DESIGNED	J.O.H.
CHECKED	B.R.T.
DRAWN	T.A.C.
CHECKED	J.O.H.