

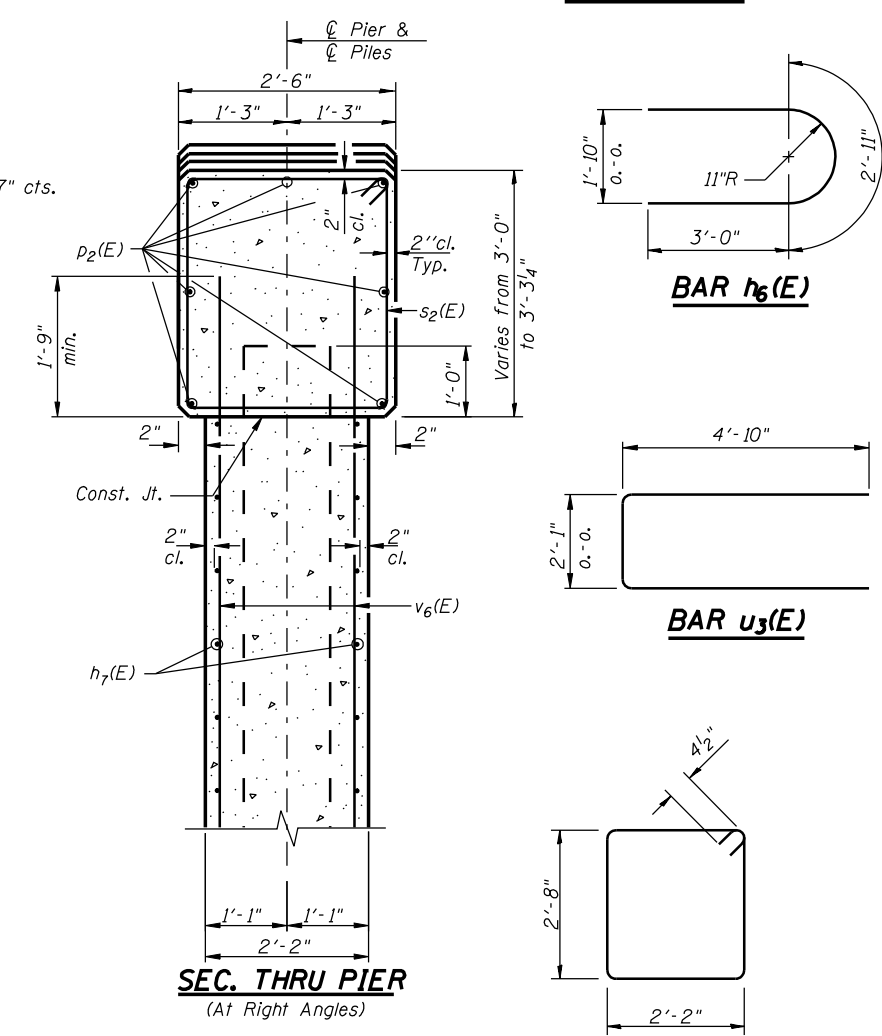
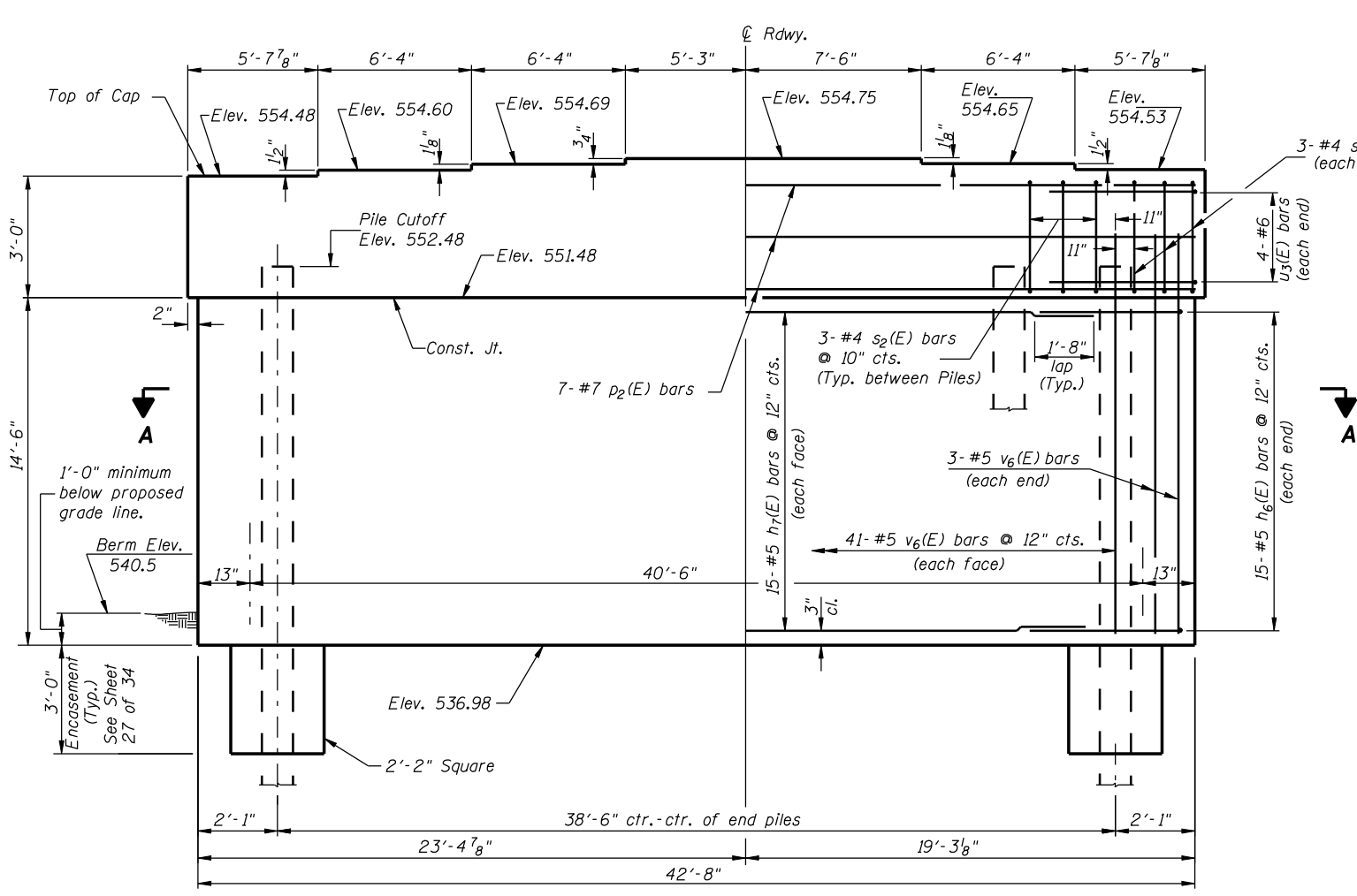
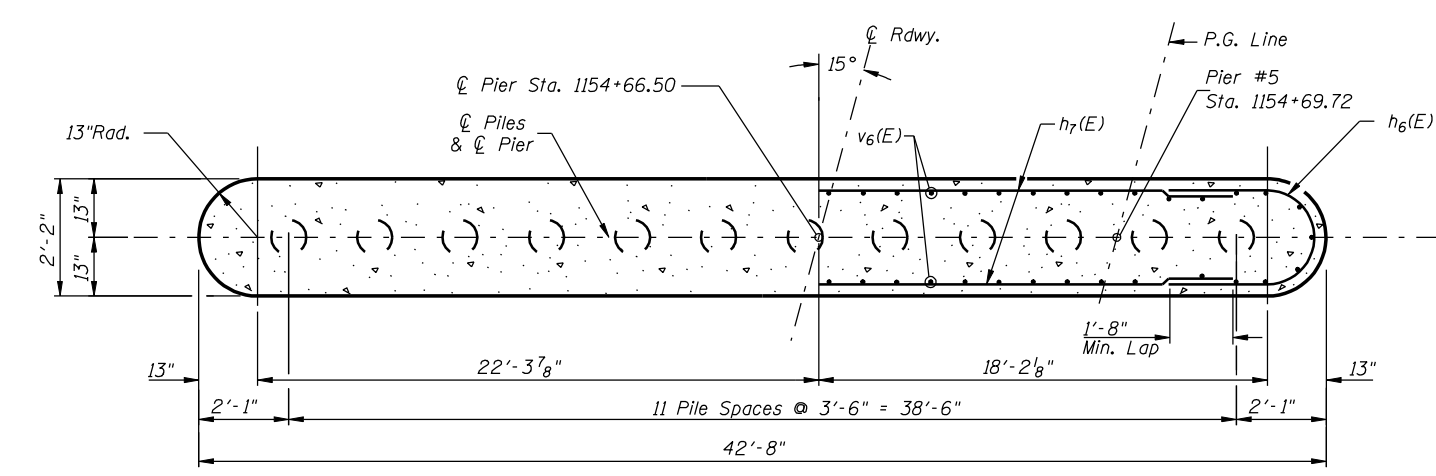
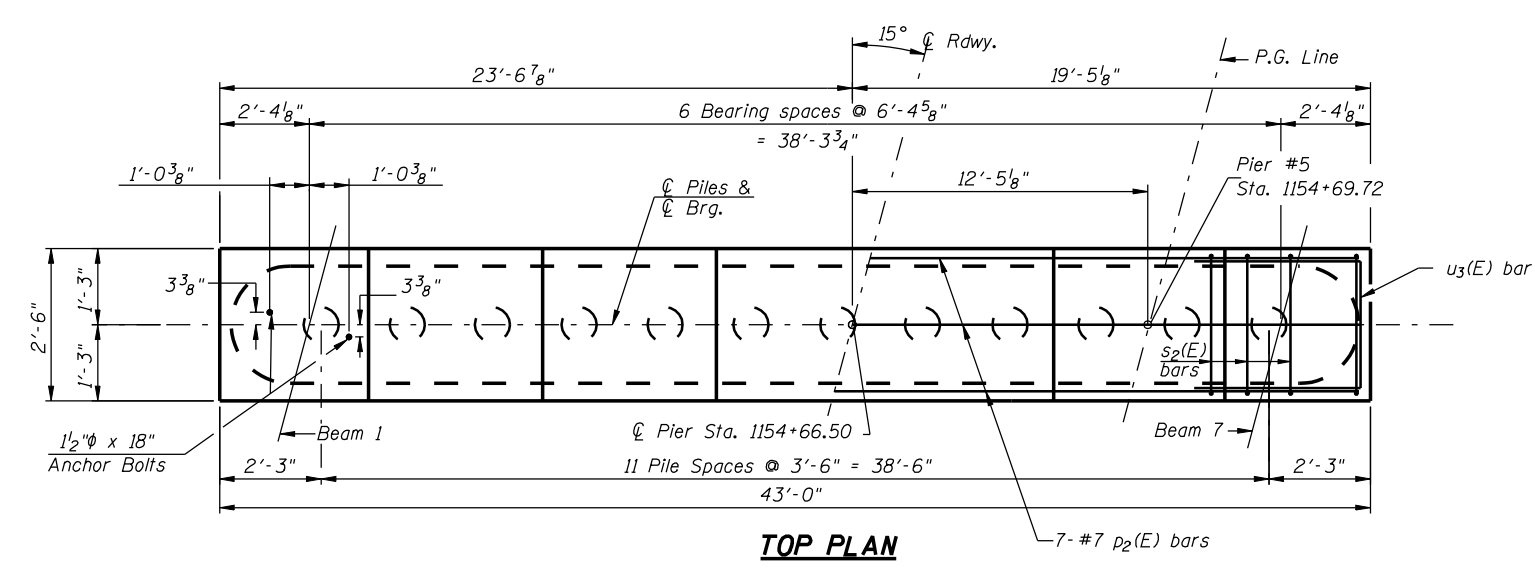
### PILE DATA

Type: Metal Pile Shells, 14"  
Capacity: 55 Tons  
Est. Length: 53 Ft.  
No. Required: 12

### NOTES

- Space Reinforcement in cap to miss anchor bolts.
- All edges shall have standard 3/4" chamfers.
- Pour steps monolithically with cap.

**CONTRACT NO. 72680**



### BILL OF MATERIAL BAR LIST FOR ONE PIER

Bar	No.	Size	Length	Shape
h6(E)	30	#5	8'-11"	
h7(E)	30	#5	38'-10"	
p2(E)	7	#7	42'-8"	
s2(E)	39	#4	10'-5"	
u3(E)	8	#6	11'-9"	
v6(E)	88	#5	16'-3"	
Concrete Structures		CU YD	54.3	
Reinforcement Bars, Epoxy Coated		POUND	4,010	
Metal Pile Shells, 14"		FOOT	638	
Structure Excavation		CU YD	38	
Concrete Encasement		CU YD	4.8	

Reinforcement bars designated (E) shall be epoxy coated.

DESIGNED	J.O.H.
CHECKED	B.R.T.
DRAWN	T.A.C.
CHECKED	J.O.H.

**PIER 5**  
**U.S. ROUTE 136 OVER**  
**LAMOINE RIVER**  
F.A.P. RTE. 315 SECTION 34-4B-1  
HANCOCK COUNTY  
STATION 1153+07.72  
STR. NO. 034-0508 (WBL)

HUTCHISON ENGINEERING, INC.  
JACKSONVILLE, ILLINOIS  
Date: January 31, 2006