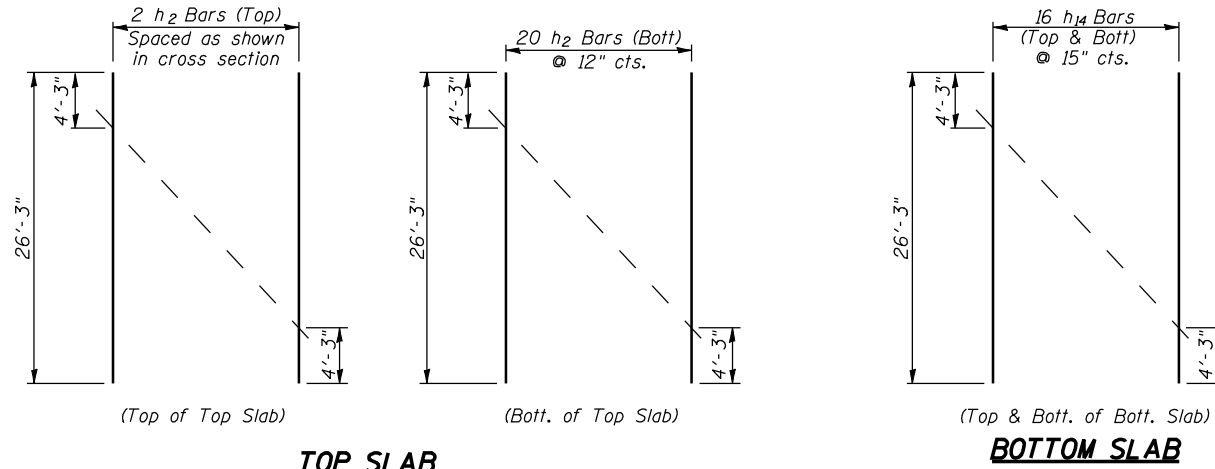


ROUTE NO.	SECTION	COUNTY	TOTAL SHEETS	SHEET NO.
F.A.P. 315	34-4	HANCOCK	452	236
FED. ROAD DIST. NO. 7	ILLINOIS	FED. AID PROJECT		

SHEET NO. 4  
7 SHEETS

D-98-951-02  
CONTRACT NO. 72680

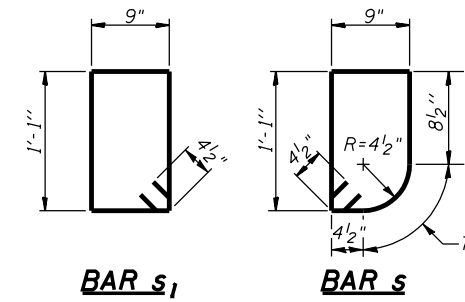


**TOP SLAB**

**BOTTOM SLAB**

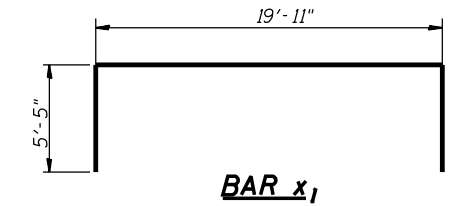
**FIELD CUTTING DIAGRAMS**

Order  $h_2$  &  $h_{14}$  bars full length, cut to fit skew according to Field Cutting Diagrams shown above. Use remainder of bars in opposite end of culvert.



**BAR s<sub>1</sub>**

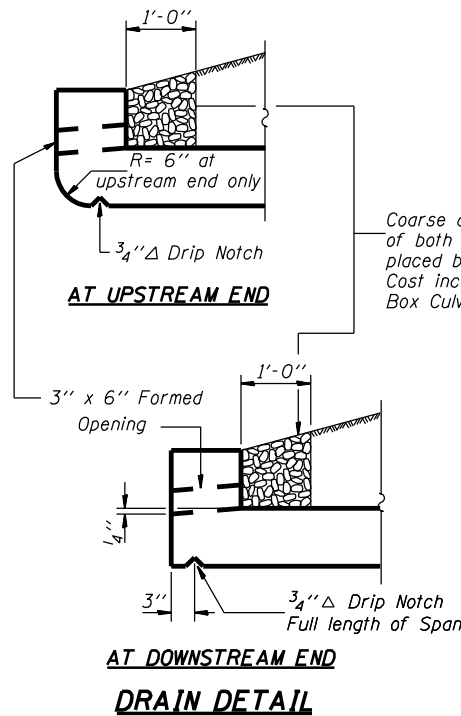
**BAR s**



**BAR x<sub>1</sub>**

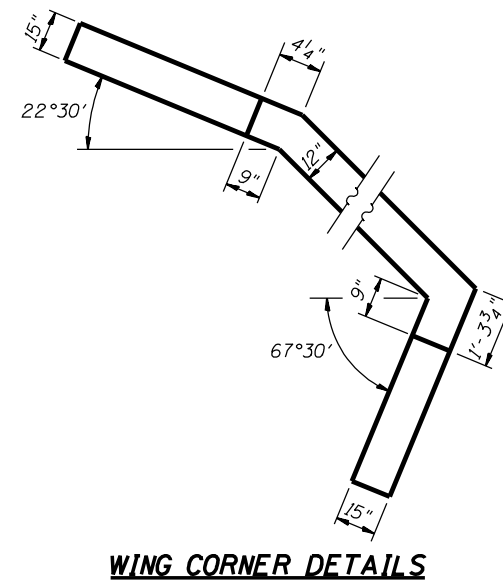
**BILL OF MATERIAL**

Bar	No.	Size	Length	Shape
a	148	#7	20'-3"	U
a <sub>2</sub>	34	#4	9'-0"	—
d	34	#4	4'-6"	L
h	44	#6	8'-0"	—
h <sub>1</sub>	64	#5	8'-0"	—
h <sub>2</sub>	22	#6	26'-3"	—
h <sub>3</sub>	20	#6	8'-0"	—
h <sub>4</sub>	4	#6	25'-8"	—
h <sub>5</sub>	8	#6	26'-3"	—
h <sub>6</sub>	18	#9	17'-9"	—
h <sub>7</sub>	24	#9	8'-0"	—
h <sub>8</sub>	16	#6	12'-0"	—
h <sub>9</sub>	14	#6	10'-3"	—
h <sub>10</sub>	14	#6	19'-0"	—
h <sub>11</sub>	14	#6	27'-9"	—
h <sub>13</sub>	6	#6	24'-8"	—
h <sub>14</sub>	32	#5	26'-3"	—
s	24	#4	4'-3"	D
s <sub>1</sub>	24	#4	4'-5"	D
v	190	#5	8'-1"	—
v <sub>1</sub>	16	#4	11'-0"	—
x	124	#4	1'-0"	—
x <sub>1</sub>	12	#4	30'-9"	L
Concrete Box Culverts			CU YD	98.8
Reinforcement Bars			POUND	15,580

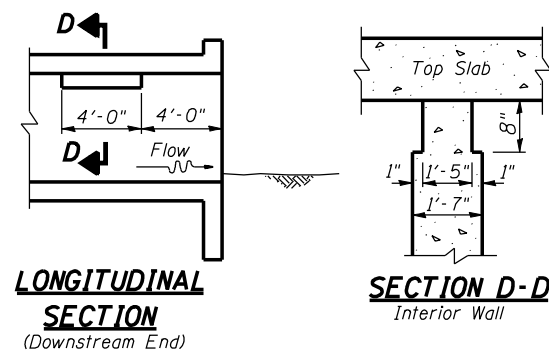


**AT UPSTREAM END**

**AT DOWNSTREAM END  
DRAIN DETAIL**



**WING CORNER DETAILS**

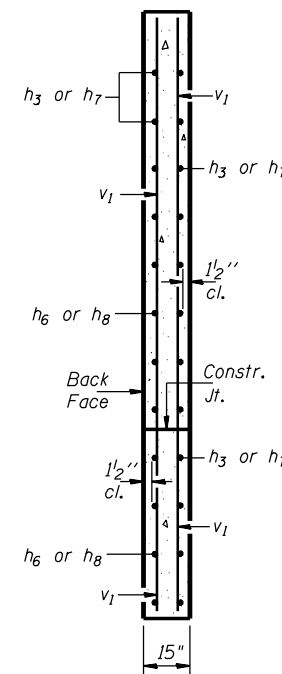


**LONGITUDINAL SECTION  
(Downstream End)**

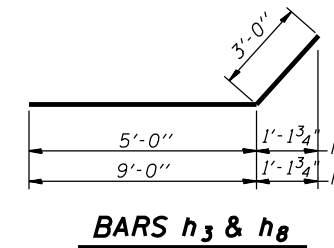
**SECTION D-D  
Interior Wall**

**PHOEBE NESTING SITE DETAIL**

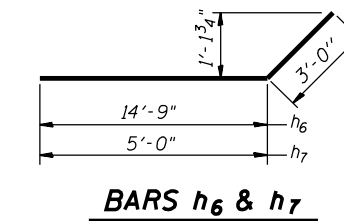
Note: Notch by rough-finished board attached to and removed with formwork. (Do not chamfer)



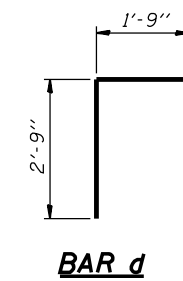
**SECTION A-A**



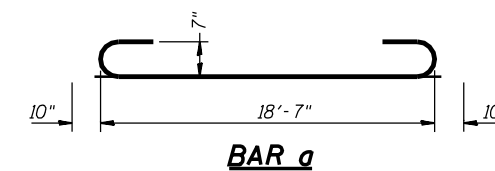
**BARS h<sub>3</sub> & h<sub>8</sub>**



**BARS h<sub>6</sub> & h<sub>7</sub>**



**BAR d**



**BAR a**

DESIGNED	JOH
CHECKED	BRT
DRAWN	TC TD
CHECKED	JOH

**CULVERT DETAILS  
U.S. ROUTE 136 OVER  
TRIBUTARY PRAIRIE CREEK  
F.A.P. ROUTE 315 SECTION 34-4  
HANCOCK COUNTY  
STATION 960+46.00  
S.N. 034-2513**

HUTCHISON ENGINEERING, INC.  
JACKSONVILLE, ILLINOIS