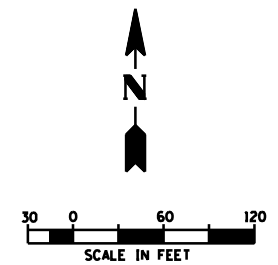


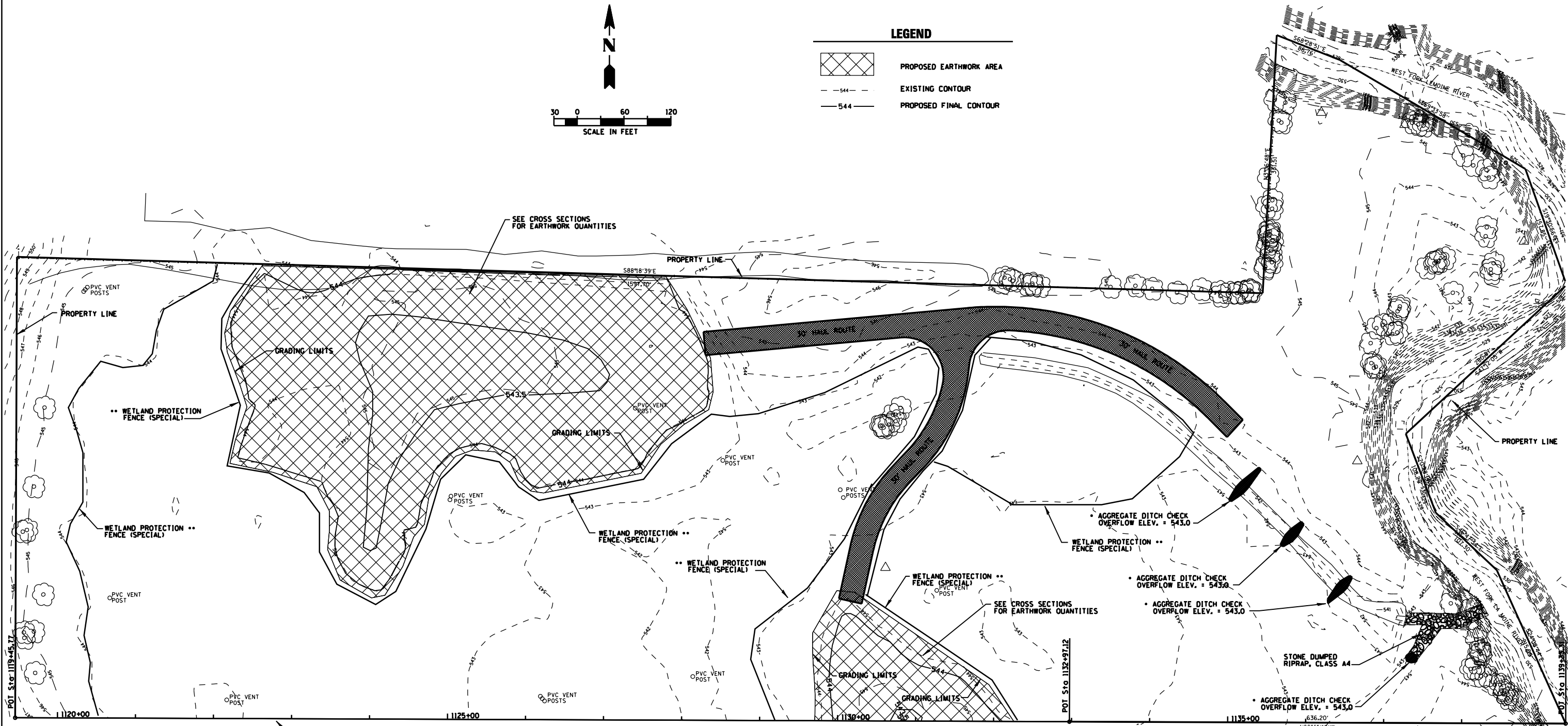
F.A. RTE.	SECTION	COUNTY	TOTAL SHEETS	SHEET NO.
315	34-4	HANCOCK	452	248
STA. 1119+45.77		TO STA. 1139+33.31		
FED. ROAD DIST. NO.		ILLINOIS FED. AID PROJECT		

D-98-891-02
CONTRACT NO. 72680



LEGEND

	PROPOSED EARTHWORK AREA
- - - 544 - - -	EXISTING CONTOUR
— 544 —	PROPOSED FINAL CONTOUR



BASELINE / MATCHLINE

CALL JULIE 1-800-892-0123
 WITH THE FOLLOWING:
 COUNTY HANCOCK
 CITY-TOWNSHIP CITY OF CARTHAGE
 SEC & 1/4 SEC NO.
 48 HOURS BEFORE YOU DIG,
 EXCLUDING SAT., SUN., & HOLIDAYS

ELEVATION BENCH MARKS		
DATUM: USGS		
NO.	DESCRIPTION	ELEV.
TA-233	FOUND CHISELED SQUARE CUT ON TOP OF CONC. HAND RAIL AT W. END SOUTHWEST SIDE OF ROUTE 136, OVER W. BRANCH LA MOINE RIVER, (PROVIDED BY FROM 100)	561.05
BMTA231	FOUND 60 D NAIL IN S. FACE P.P. JUST WEST OF W/LY PROPERTY LINE OF PARCEL OPPOSITE HOUSE #2535 EAST US HIGHWAY #136.	557.19

- NOTE: PAY FOR AS AGGREGATE (EROSION CONTROL)
- NOTE: PAY FOR AS FENCE (EROSION CONTROL)



REVISIONS	
NAME	DATE

ILLINOIS DEPARTMENT OF TRANSPORTATION
GRADING AND EROSION CONTROL PLAN
 SHEET 2 OF 2
 SCALE: 1" = 60'
 DATE: 3/18/2006
 DRAWN BY: WFS
 CHECKED BY: SDK