
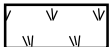

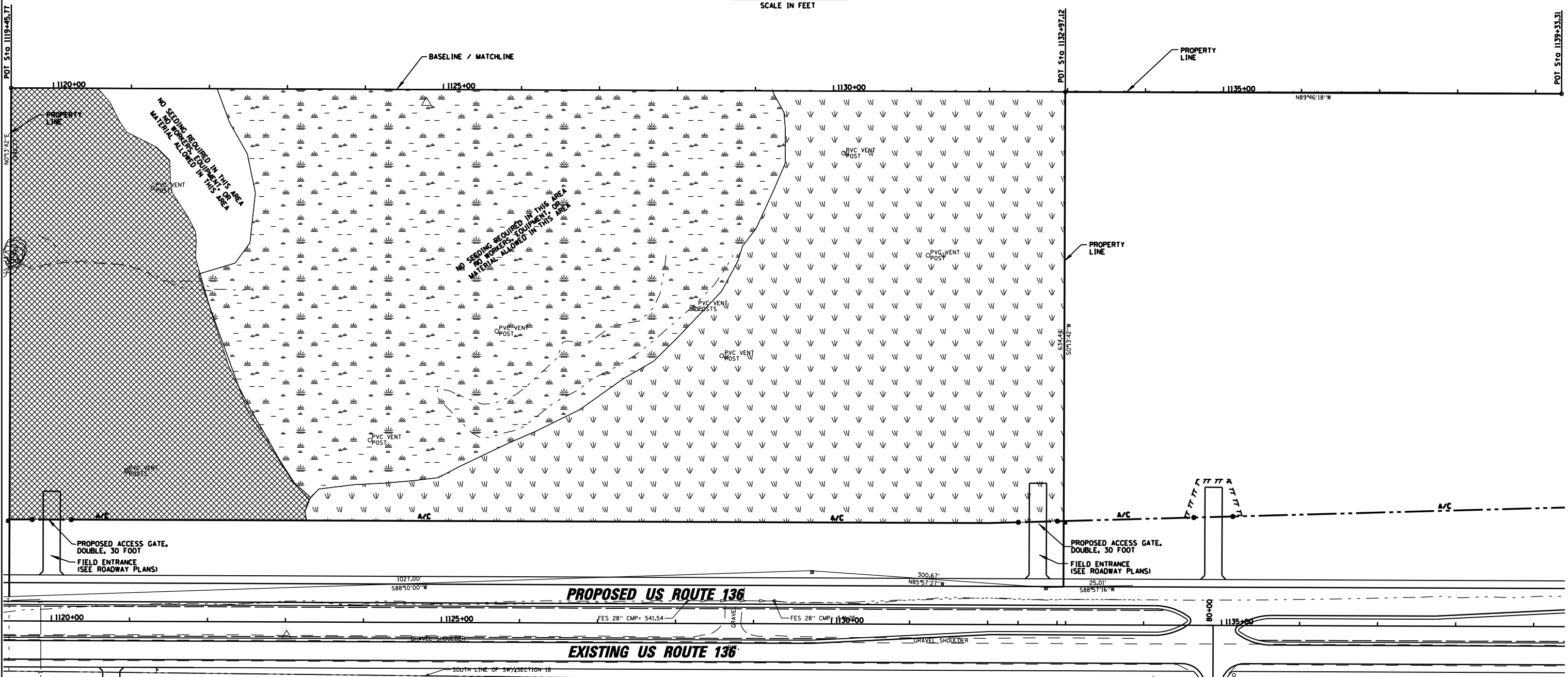
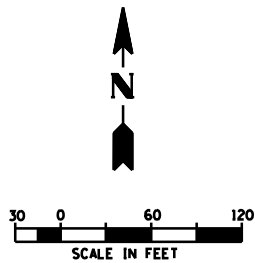



**LEGEND**

-  NATURALIZED WET MEADOW AND EMERGENT WETLAND (NO SEEDING REQUIRED)
-  FORESTED WETLAND MIXTURE & SEEDING/INTERSEEDING, CLASS 2 (SPECIAL)
-  UPLAND BUFFER MIXTURE INTERSEEDING, CLASS 4 (SPECIAL)



CALL JULIE 1-800-892-0123  
WITH THE FOLLOWING:

 HANCOCK COUNTY  
CITY-TOWNSHIP CITY OF CARTHAGE  
SEC & 1/4 SEC NO.  
**48 HOURS BEFORE YOU DIG.**  
EXCLUDING SAT., SUN., & HOLIDAYS

ELEVATION BENCH MARKS DATUM: USGS		
NO.	DESCRIPTION	ELEV.
TA-233	FOUND CHISELED SQUARE CUT ON TOP OF CONC. HAND RAIL AT W. END SOUTHWEST SIDE OF ROUTE 136, OVER W. BRANCH LA MOINE RIVER, (PROVIDED BM FROM DOT)	561.05
BMTA231	FOUND 60 D NAIL IN S. FACE P.P. JUST WEST OF W/LY PROPERTY LINE OF PARCEL OPPOSITE HOUSE #2535 EAST US HIGHWAY #136.	557.19



REVISIONS	
NAME	DATE

ILLINOIS DEPARTMENT OF TRANSPORTATION

**SITE AND LANDSCAPING PLAN**  
SHEET 1 OF 2

SCALE: 1" = 60'  
DATE: 3/18/2006

DRAWN BY: WFS  
CHECKED BY: SDK