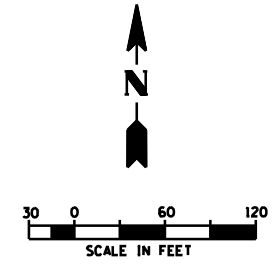


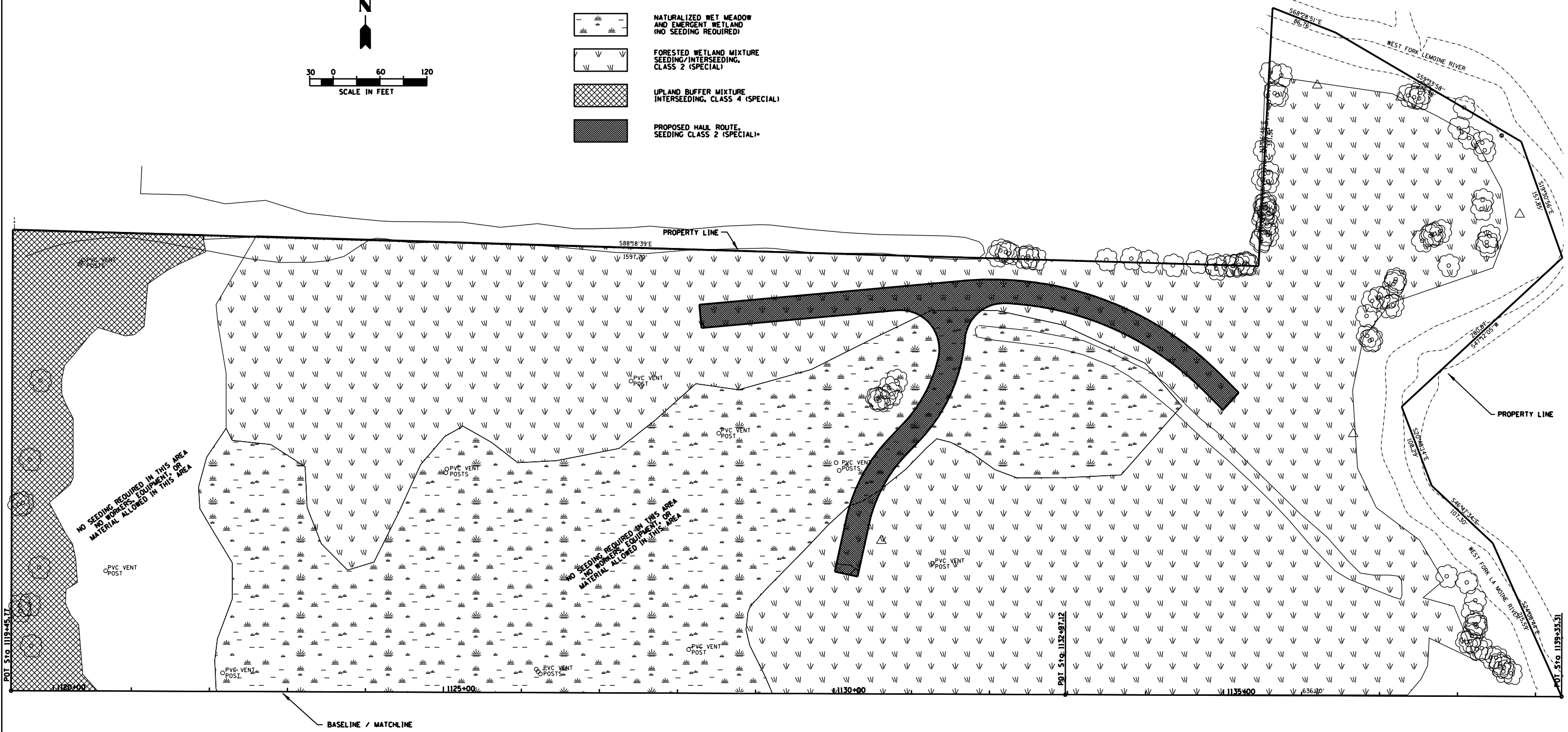
F.A. RTE.	SECTION	COUNTY	TOTAL SHEETS	SHEET NO.
315	34-4	HANCOCK	452	250
STA. 1119+45.77		TO STA. 1139+33.31		
FED. ROAD DIST. NO.		ILLINOIS FED. AID PROJECT		

CONTRACT NO. 72680



LEGEND

	NATURALIZED WET MEADOW AND EMERGENT WETLAND (NO SEEDING REQUIRED)
	FORESTED WETLAND MIXTURE SEEDING/INTERSEEDING, CLASS 2 (SPECIAL)
	UPLAND BUFFER MIXTURE INTERSEEDING, CLASS 4 (SPECIAL)
	PROPOSED HAUL ROUTE, SEEDING CLASS 2 (SPECIAL)



NO SEEDING REQUIRED IN THIS AREA
NO WORKERS, EQUIPMENT, OR MATERIAL ALLOWED IN THIS AREA

NO SEEDING REQUIRED IN THIS AREA
NO WORKERS, EQUIPMENT, OR MATERIAL ALLOWED IN THIS AREA

• HAUL ROUTE TO BE CHISEL PLOWED AND SEEDED WITH SEEDING, CLASS 2 (SPECIAL) WHEN ACTIVITIES ARE COMPLETE. SEE SPECIAL PROVISIONS

CALL JULIE 1-800-892-0123 WITH THE FOLLOWING:

COUNTY: HANCOCK
CITY-TOWNSHIP: CITY OF CARTHAGE
SEC & 1/4 SEC NO.:
48 HOURS BEFORE YOU DIG.
EXCLUDING SAT., SUN., & HOLIDAYS

ELEVATION BENCH MARKS		DATUM: USGS	
NO.	DESCRIPTION		ELEV.
TA-233	FOUND CHISELED SQUARE CUT ON TOP OF CONC. HAND RAIL AT W. END SOUTHLY SIDE OF ROUTE 136, OVER W. BRANCH LA MOINE RIVER. (PROVIDED BM FROM IDOT)		561.05
BMTA231	FOUND 60 D NAIL IN S. FACE P.P. JUST WEST OF W/LY PROPERTY LINE OF PARCEL OPPOSITE HOUSE #2535 EAST US HIGHWAY #136.		557.19

REVISIONS	
NAME	DATE

ILLINOIS DEPARTMENT OF TRANSPORTATION

SITE AND LANDSCAPING PLAN
SHEET 2 OF 2

SCALE: 1" = 60'
DATE: 3/18/2006

DRAWN BY: WFS
CHECKED BY: SDK

